



Double Wooden Garage SILVIA F (34 mm + cladding), 6x6 m (20'x20'), With Carport (directly in front) 6x6 m (20'x20')

Product #AV2762

- Interchange the opposite walls!
- Hardware kit included
- Window and door seals included
- Storm braces included
- Pure glass – no cheap plastic
- Polite & Convenient delivery
- Made while protecting the forests
- Better resistance to rot & mould
- Moisture resistant door and windows
- Reinforced roof construction
- Secure locks & hinges
- Direct from the factory

£12,756.00

~~£13,006.00~~ / You save £250.00

The price includes:

wooden building kit (walls, external cladding, roof, pressure treated floor bearers), double glazed wooden windows & pedestrian doors, hardware kit, delivery, offloading, VAT.

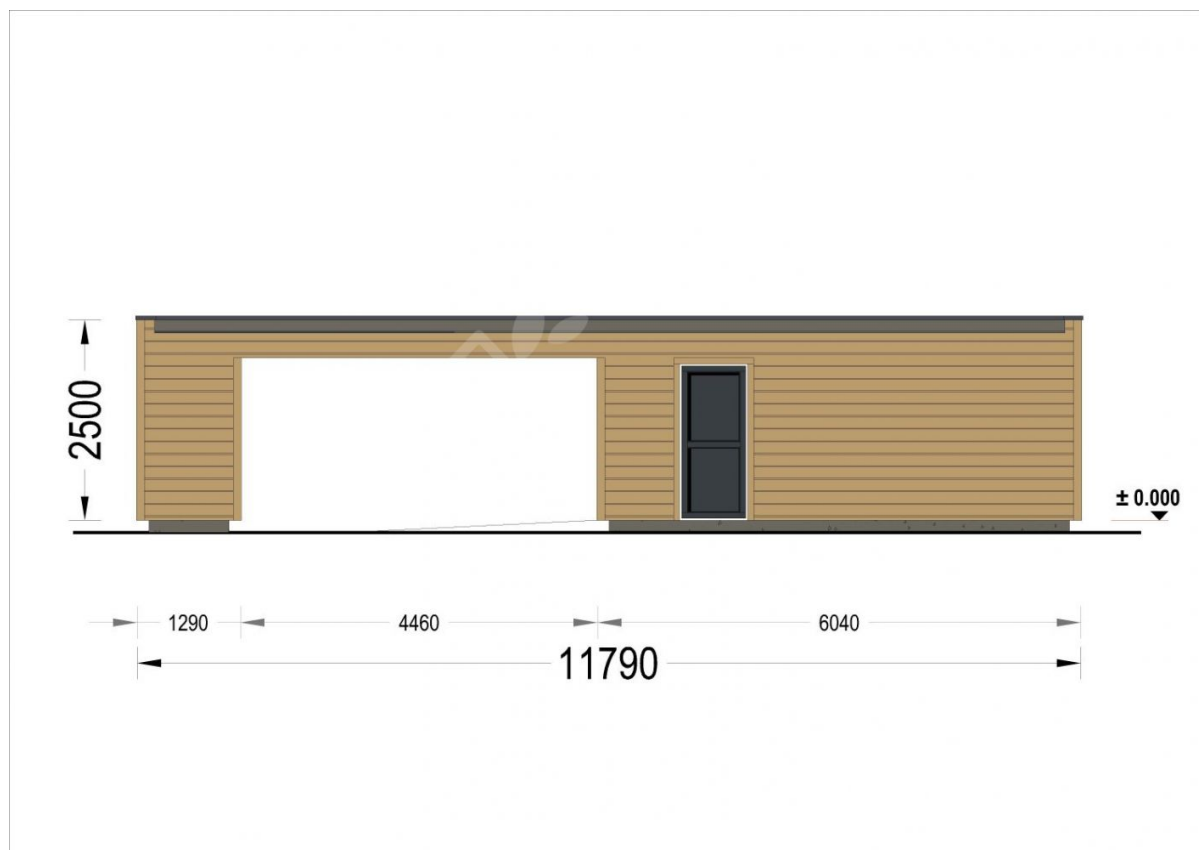
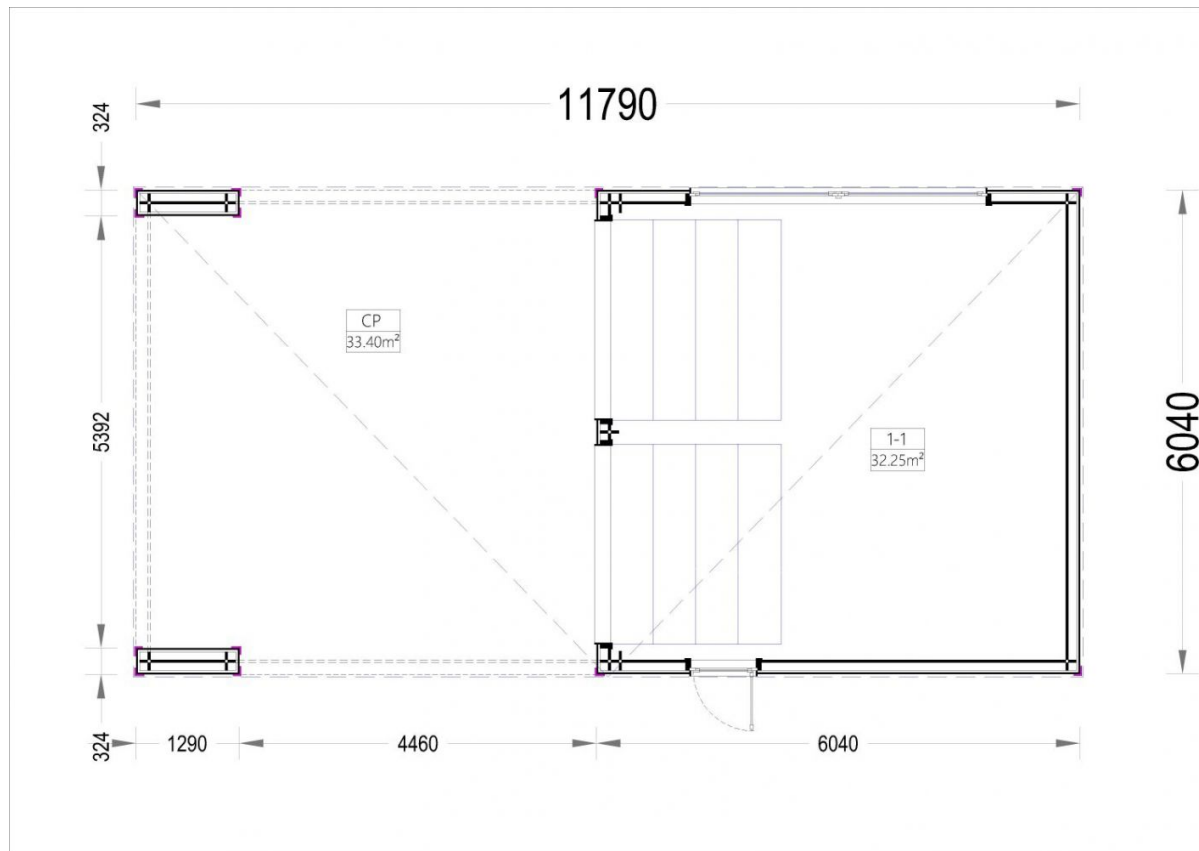
Visit our website to make sure this is the current price:

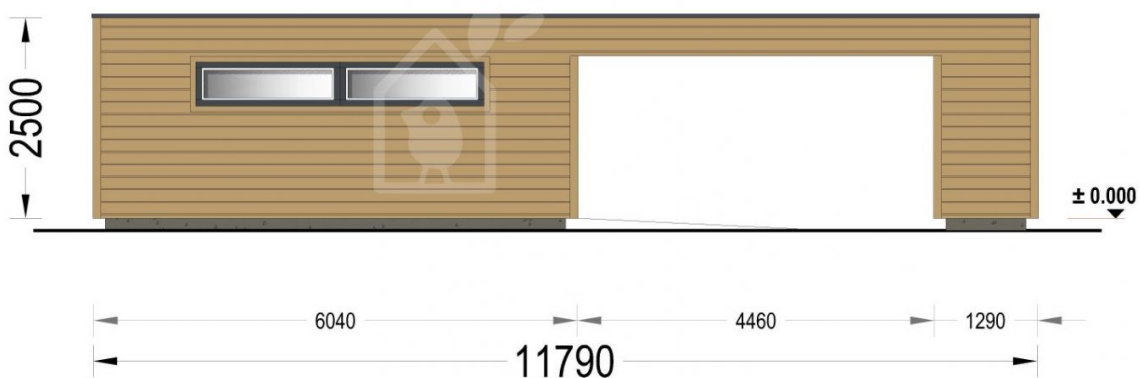
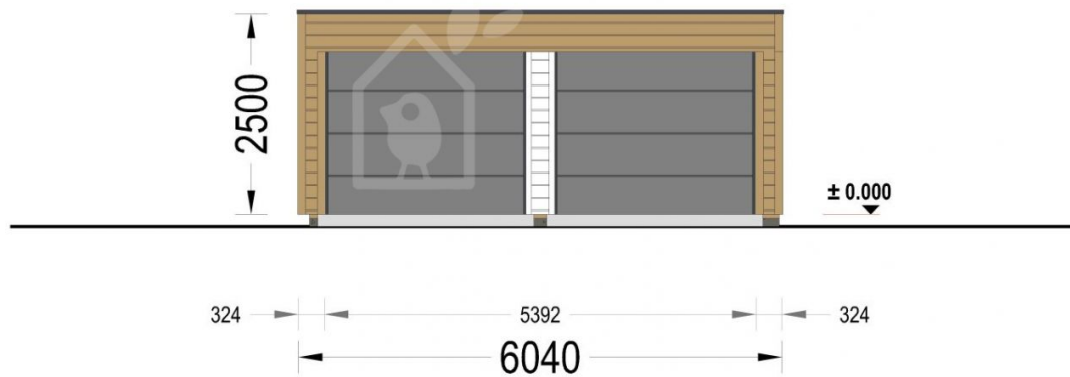
<https://www.quick-garden.co.uk/double-wooden-garage-silvia-f-34mm-cladding-6x6m-20x20-with-carport-directly-in-front-6x6m-20x20.html>

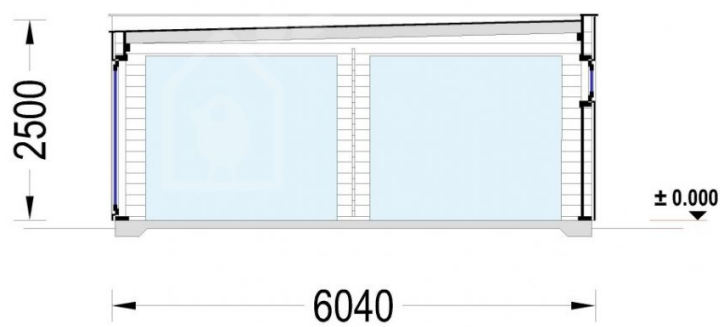
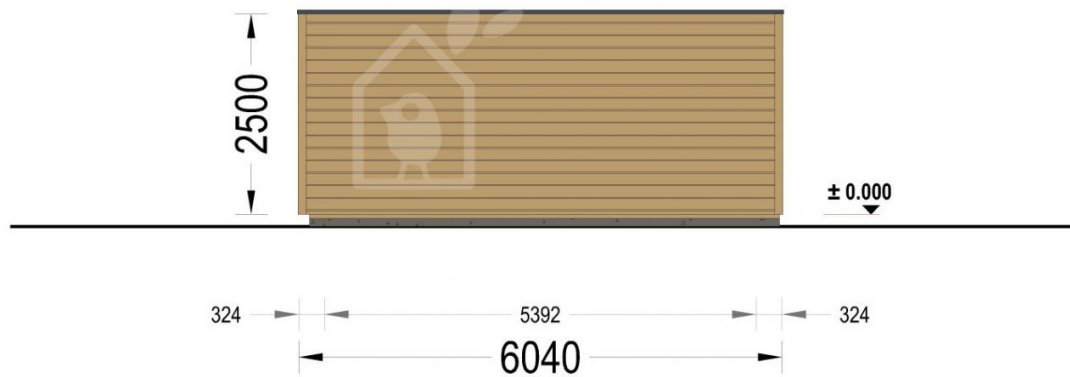


Finance available. Contact us!

Specifications & detailed sketches







Product specifications

Volume	9.30
Material	Slow grown spruce
Doors	1 * 85 x 192 cm (Entrance door)
Roof Area	72.50 m²
Floor area	66.25 m²
Windows	2 * 186 x 50 cm (Vitrine)
Eaves height	229,5 cm
Ridge Height	249,75 cm
Roof	44x140 mm wooden rafters; 19 - 20 mm thick tongue & groove boards
Floor	-
Wall	34 mm wooden log; 100 mm timber frame; 25 mm timber batten (vertical); 21 mm timber cladding
Wood Treatment	Optional
Roof Slope Ratio	1°
Anti Rot Warranty	10 Year
Garage Door Dimensions	1* 240 x205 cm
Roof Covering Material	Optional
External dimensions (WxD), Metric	604 x 1179 cm

Select product features according to your needs

Sectional Garage Doors	+£2,668.00
Clear water-based primer for interior	+£315.00
Motorization kit for garage door + Rail	+£984.00
Roof coverage – self-adhesive bitumen sheet	+£2,772.00
Anthracite Grey	+£744.00

TIKKURILA Ultra Classic paints	Yellow	+£669.00
	White	+£483.00
	Brown	+£507.00
	Clear	+£388.00
PVC windows & doors (White)		+£1,435.00
PVC windows & doors (Anthracite)		+£1,826.00
Woodshed 2.2m x 1.44m		From +£599.00

Customer Service

Free delivery *

Mainland England and Wales

4 - 8 working days for products in stock

4 - 8 weeks for products not in stock or custom-made products

Mainland Scotland

8 - 15 working days for products in stock

4 - 8 weeks for products not in stock or custom-made products

* An extra charge for deliveries to mainland Scotland applies only for items which are priced under £3000. In such cases you will find these charges on each product page. For all items whose price is over £3000, delivery to mainland Scotland is free of charge.

Payment

We accept card and bank payments.

To submit your order, you can either choose to pay a deposit of 20% of the total price or to pay the whole price in one go.

Planning permission

Contact us for any advice you may need regarding basic planning permission or building regulation matters. We will always be happy to help you.

10 yrs. warranty

All garden buildings with a wall thickness of at least 34mm come with a 10-year anti-rot guarantee. Structures with 28mm wall thickness come with a corresponding 5-year anti-rot guarantee.