



**Double Wooden Garage With A Shed
SILVIA DUO F PLUS (34 mm +
Cladding), 8x6 m (26'x20'), 48 m²**

Product #AV2347

- Interchange the opposite walls!
- Hardware kit included
- Window and door seals included
- Storm braces included
- Pure glass – no cheap plastic
- Polite & Convenient delivery
- Made while protecting the forests
- Better resistance to rot & mould
- Moisture resistant door and windows
- Reinforced roof construction
- Secure locks & hinges
- Direct from the factory

£10,662.00

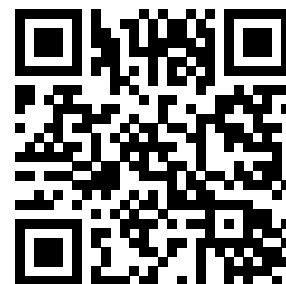
~~£12,368.00~~ / You save £1,706.00

The price includes:

wooden building kit (walls, external cladding, roof, pressure treated floor bearers), double glazed wooden windows & pedestrian doors, hardware kit, delivery, offloading, VAT.

Visit our website to make sure this is the current price:

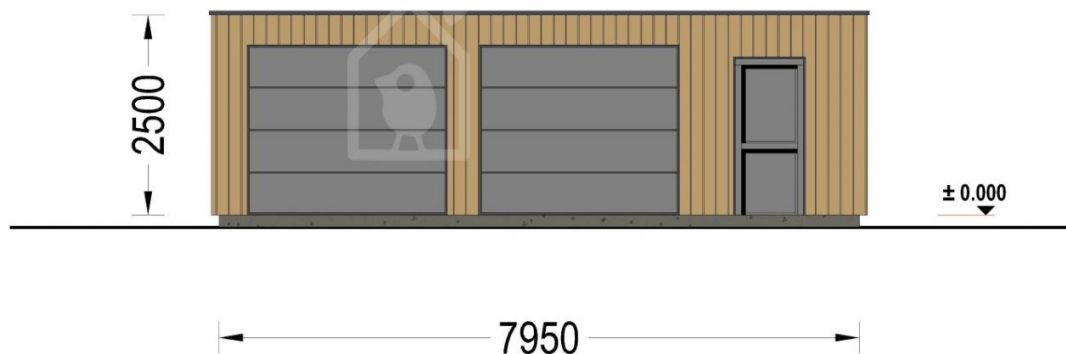
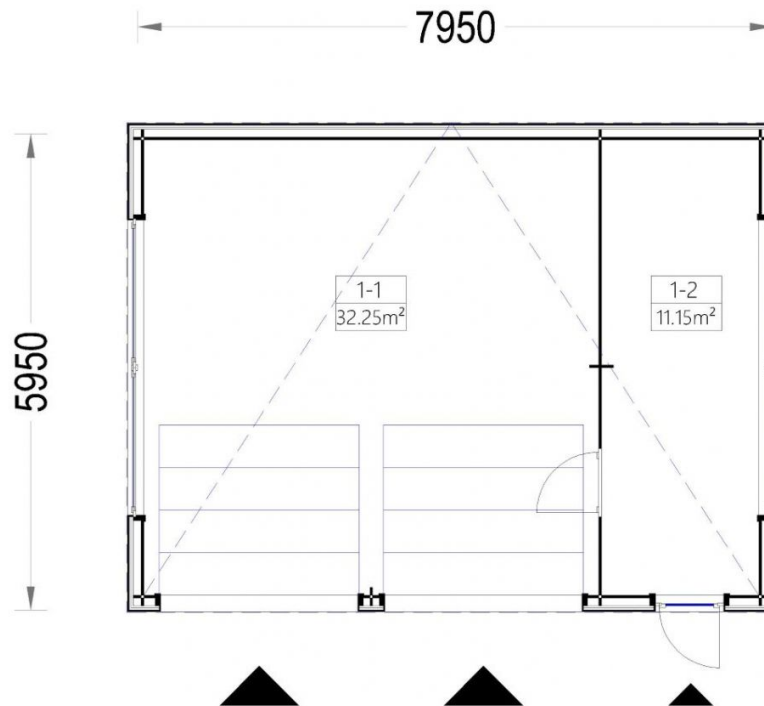
<https://www.quick-garden.co.uk/AV2347>

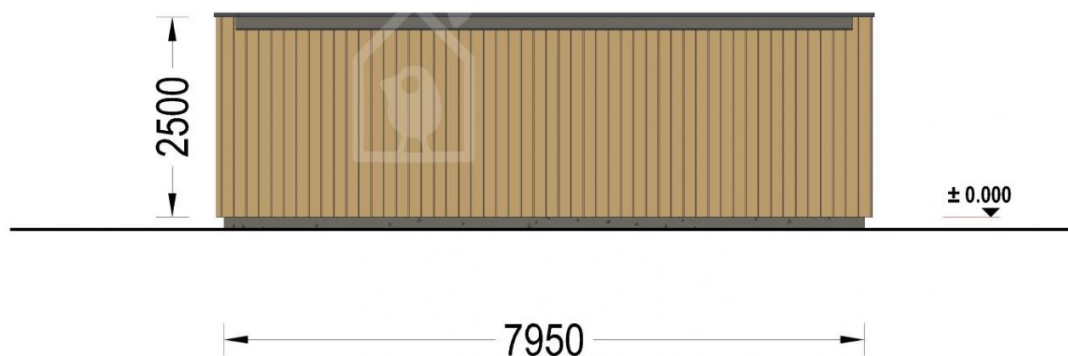
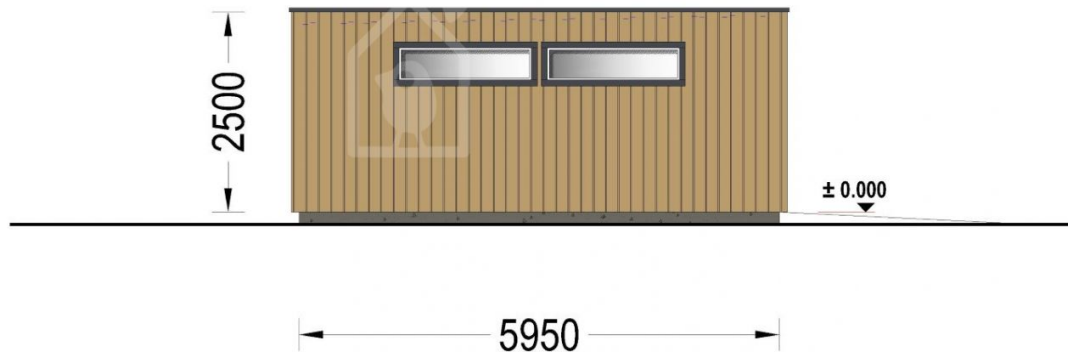


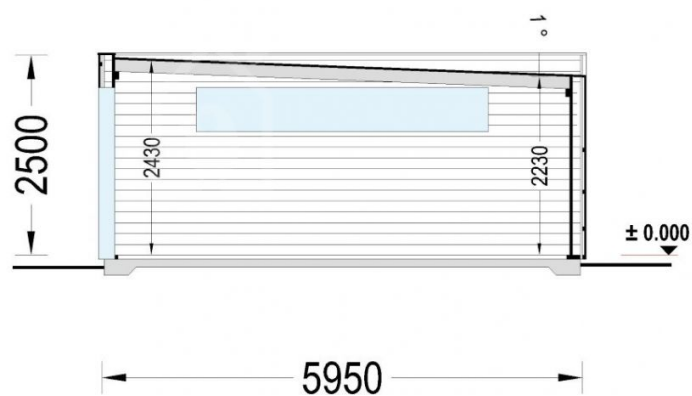
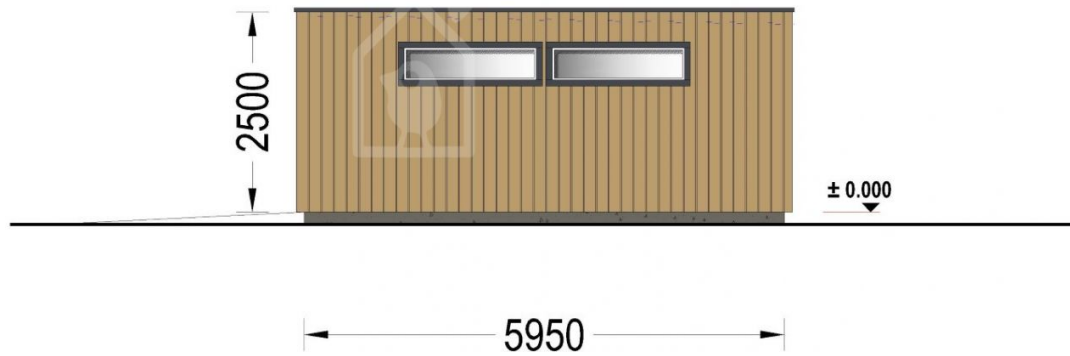
Finance available. Contact us!

Specifications & detailed sketches

STELA 34+C







Product specifications

| | |
|-----------------------------------|---|
| Material | Slow grown spruce |
| Floor area | 48 m² |
| Windows | 4 * 50x186 cm (non-opening) |
| Ridge Height | 236,5 cm |
| Roof | 140 - 150 mm wooden rafters; 19 - 20 mm thick tongue & groove boards |
| Floor | - |
| Wall | 34 mm wooden log; 100 mm timber frame; 25 mm timber batten (vertical); 25 mm timber batten (horizontal); 18 - 20 mm timber cladding |
| Wood Treatment | Optional |
| Anti Rot Warranty | 10 Year |
| Garage Door Dimensions | 2 * 240x205 cm |
| Roof Covering Material | Optional |
| External dimensions (WxD), Metric | 809 x 609 cm |
| Roof Area | 48 m² |
| Roof Slope Ratio | 1° |
| Eaves height | 249,5 cm |
| Doors | 2 * 85 x192 cm |
| Total Number of Rooms | 2 |

Select product features according to your needs

| | | |
|---|-----------------|------------|
| Steel gutter system Ruukki | Anthracite Grey | +£572.00 |
| PVC windows (white) | | +£2,258.00 |
| Roof coverage - self-adhesive bitumen sheet | | +£1,728.00 |

| | | |
|---|--------|------------|
| Anthracite colour PVC garage doors | | +£1,166.00 |
| Clear water-based primer for interior RP Wood® (supplied in tins) | | +£245.00 |
| TIKKURILA Ultra Classic paints | Brown | +£338.00 |
| | White | +£322.00 |
| | Clear | +£291.00 |
| | Yellow | +£446.00 |
| PVC windows (anthracite) | | +£2,823.00 |
| Sectional Garage Doors | | +£2,668.00 |
| Motorization kit for garage door + Rail | | +£984.00 |

Customer Service

Free delivery *

Mainland England and Wales

4 - 8 working days for products in stock

4 - 8 weeks for products not in stock or custom-made products

Mainland Scotland

8 - 15 working days for products in stock

4 - 8 weeks for products not in stock or custom-made products

* An extra charge for deliveries to mainland Scotland applies only for items which are priced under £3000. In such cases you will find these charges on each product page. For all items whose price is over £3000, delivery to mainland Scotland is free of charge.

Payment

We accept card and bank payments.

To submit your order, you can either choose to pay a deposit of 20% of the total price or to pay the whole price in one go.

Planning permission

Contact us for any advice you may need regarding basic planning permission or building regulation matters. We will always be happy to help you.

10 yrs. warranty

All garden buildings with a wall thickness of at least 34mm come with a 10-year anti-rot guarantee. Structures with 28mm wall thickness come with a corresponding 5-year anti-rot guarantee.