



**Double Wooden Garage with Flat  
Roof MODERN (44 mm), 6x6 m  
(20'x20'), 36 m²**

Product #AV039-2TP

- Interchange the opposite walls!
- Hardware kit included
- Window and door seals included
- Storm braces included
- Pure glass – no cheap plastic
- Polite & Convenient delivery
- Made while protecting the forests
- Better resistance to rot & mould
- Moisture resistant door and windows
- Reinforced roof construction
- Secure locks & hinges
- Direct from the factory
- Fast & Easy installation
- Natural trim only
- Allergy free materials only
- Heavy duty garage door

**£6,553.00**

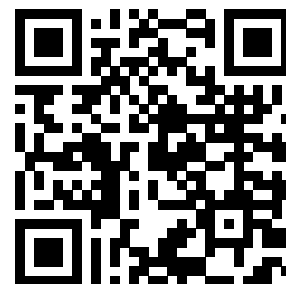
~~£6,945.00~~ / You save £392.00

**The price includes:**

wooden building kit (walls, roof, pressure treated floor bearers), double glazed wooden windows & pedestrian doors, reinforced garage doors, delivery, offloading, hardware kit & VAT.

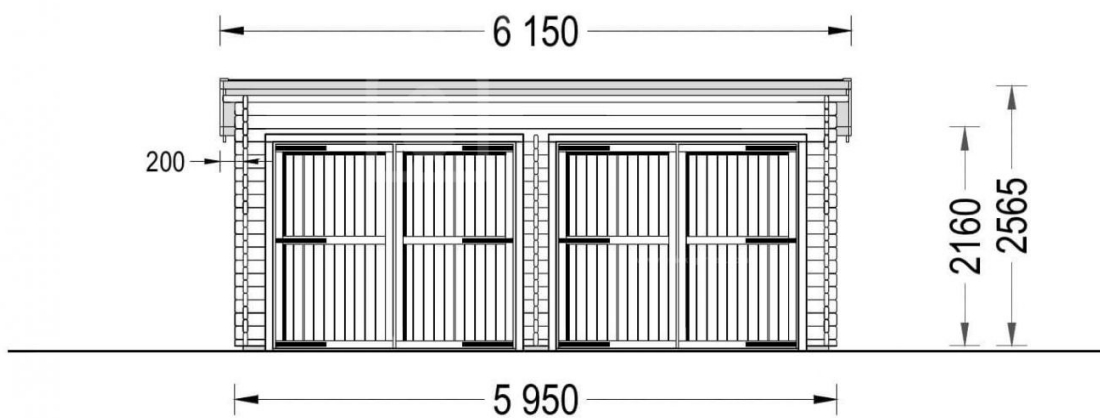
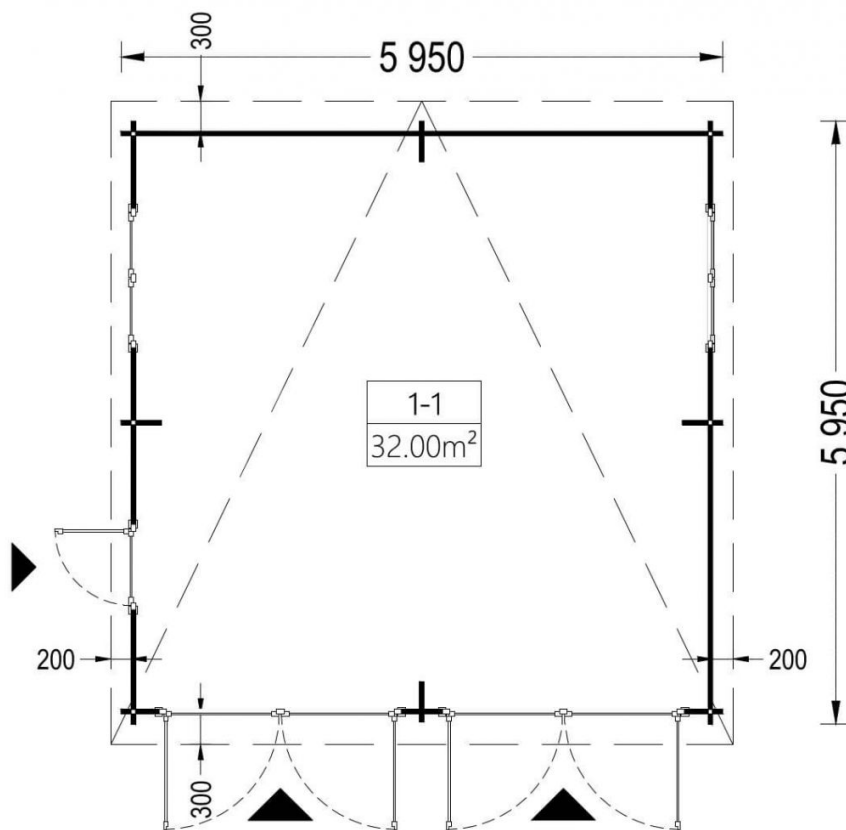
Visit our website to make sure this is the current price:

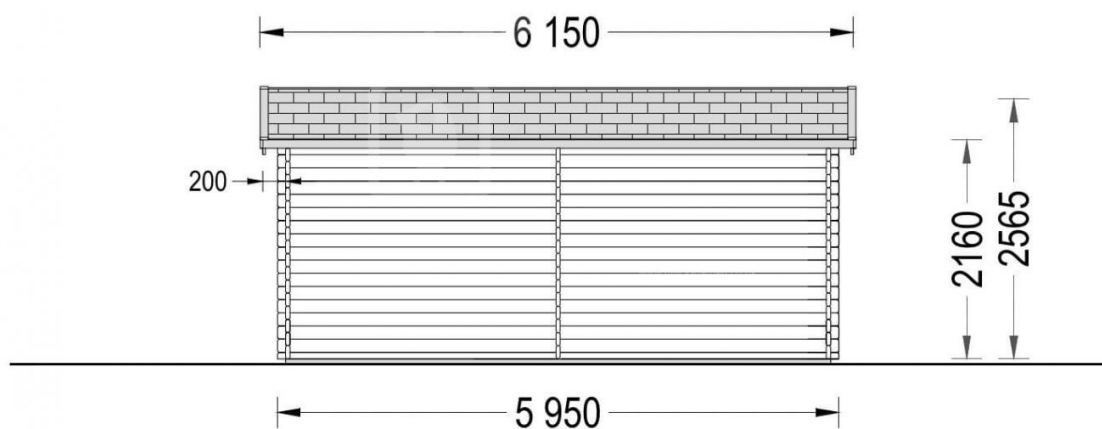
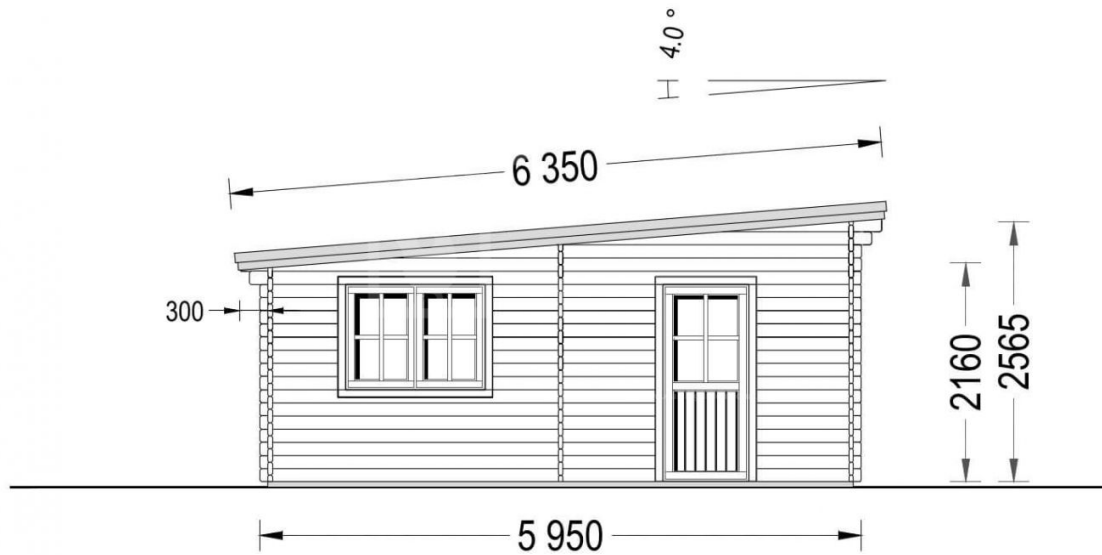
<https://www.quick-garden.co.uk/AV039-2TP>

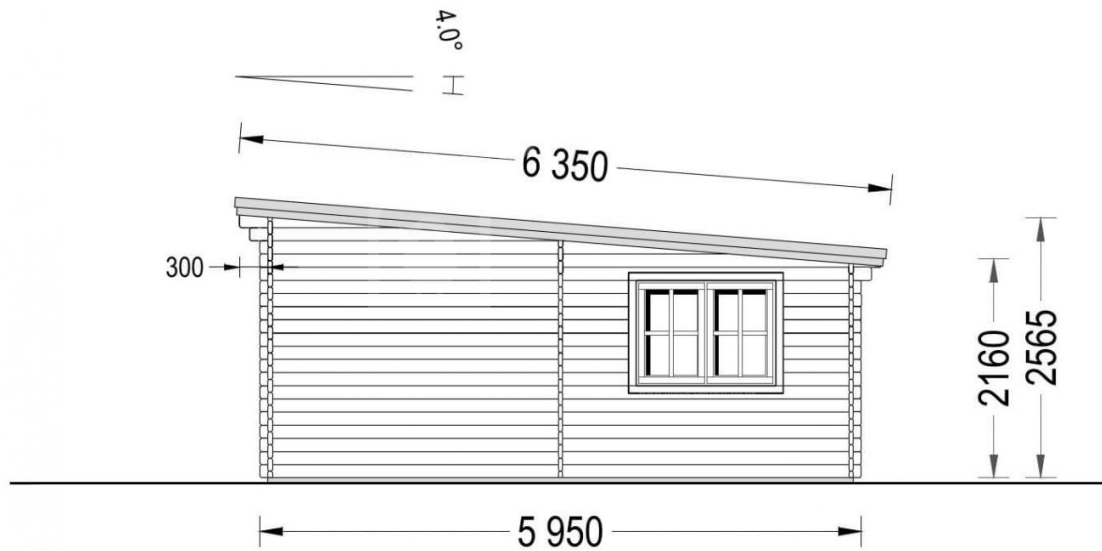


**Finance available. Contact us!**

## Specifications & detailed sketches







## Product specifications

Eaves height	216 cm
Ridge Height	256,5 cm
Internal dimensions (WxD)	566 x 566 cm
External dimensions (WxD), Metric	595 x 595 cm
Floor area	36 m <sup>2</sup>
Material	Slow grown spruce
Roof	19 - 20mm thick tongue & groove boards
Roof Covering Material	Optional
Floor	-
Anti Rot Warranty	10 Year
Wood Treatment	Optional
Roof Area	42m <sup>2</sup>
Roof Overhang (Front, Side, Back)	30 cm
Roof Slope Ratio	4°
Wall	44 mm
Doors	1* 85 cm x 192 cm
Windows	2* 138 cm x 105 cm

## Select product features according to your needs

Clear water-based primer for interior RP Wood® (supplied in tins)		+£210.00
Metal roofing	Green	+£2,137.00
	Black	+£2,137.00
	Red	+£2,137.00
Steel gutter system Ruukki	Anthracite Grey	+£475.00

TIKKURILA Ultra Classic paints	Yellow	+£446.00
	White	+£322.00
	Brown	+£338.00
	Clear	+£291.00
EPDM Roof Covering Material		+£1,040.00
Garage doors 40 mm - 240 x 205 cm		+£0.00

## Customer Service

### Free delivery \*

Mainland England and Wales

4 - 8 working days for products in stock

4 - 8 weeks for products not in stock or custom-made products

Mainland Scotland

8 - 15 working days for products in stock

4 - 8 weeks for products not in stock or custom-made products

\* An extra charge for deliveries to mainland Scotland applies only for items which are priced under £3000. In such cases you will find these charges on each product page. For all items whose price is over £3000, delivery to mainland Scotland is free of charge.

---

### Payment

We accept card and bank payments.

To submit your order, you can either choose to pay a deposit of 20% of the total price or to pay the whole price in one go.

---

### Planning permission

Contact us for any advice you may need regarding basic planning permission or building regulation matters. We will always be happy to help you.

---

### 10 yrs. warranty

All garden buildings with a wall thickness of at least 34mm come with a 10-year anti-rot guarantee. Structures with 28mm wall thickness come with a corresponding 5-year anti-rot guarantee.