



**Garden Log Cabin ALABAMA (34 mm),  
4.5x4.5 m (15'x15'), 20 m²**

Product #AV1981

- Interchange the opposite walls!
- Premium windows & doors
- Tongue & Groove floorboards included
- Hardware kit included
- Window and door seals included
- Storm braces included
- Pure glass – no cheap plastic
- Reliable floor bearers
- Polite & Convenient delivery
- Made while protecting the forests
- Better resistance to rot & mould
- Moisture resistant door and windows
- Reinforced roof construction
- Secure locks & hinges
- Direct from the factory

**£5,192.00**

~~£5,293.00~~ / You save £101.00

**The price includes:**

wooden building kit (walls, roof, floor),  
double glazed wooden doors &  
windows, hardware kit, delivery,  
offloading, VAT.

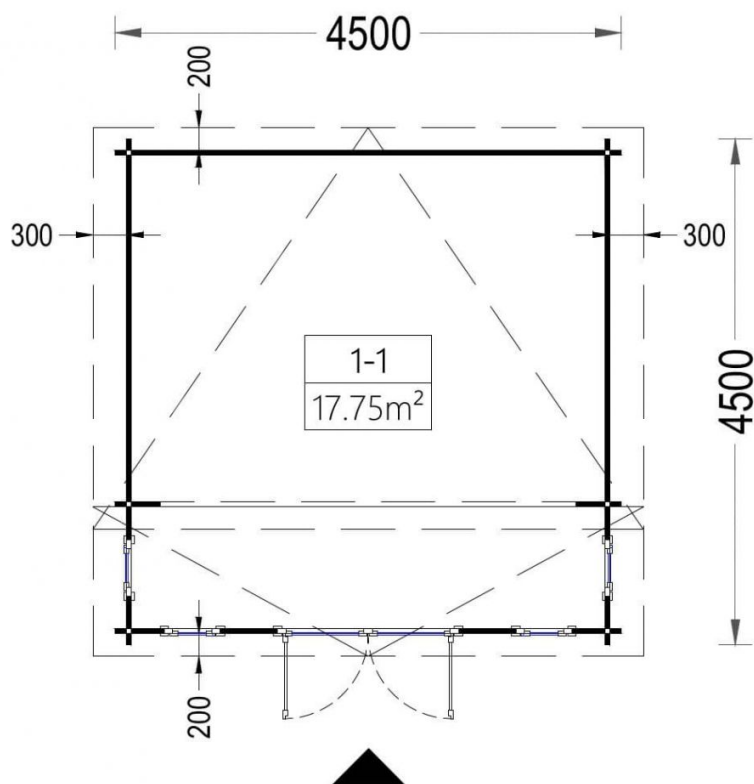
Visit our website to make sure this is  
the current price:

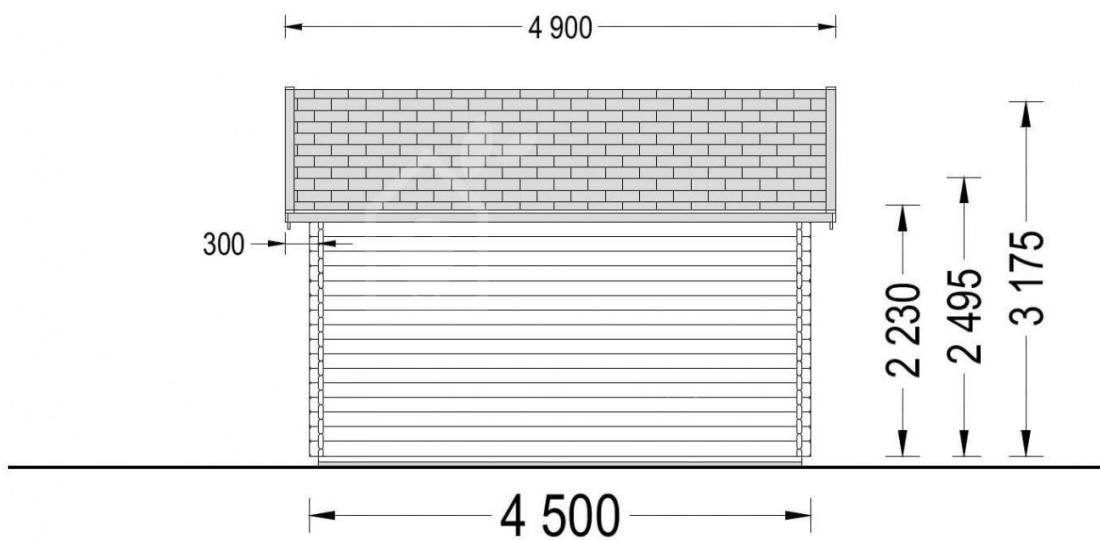
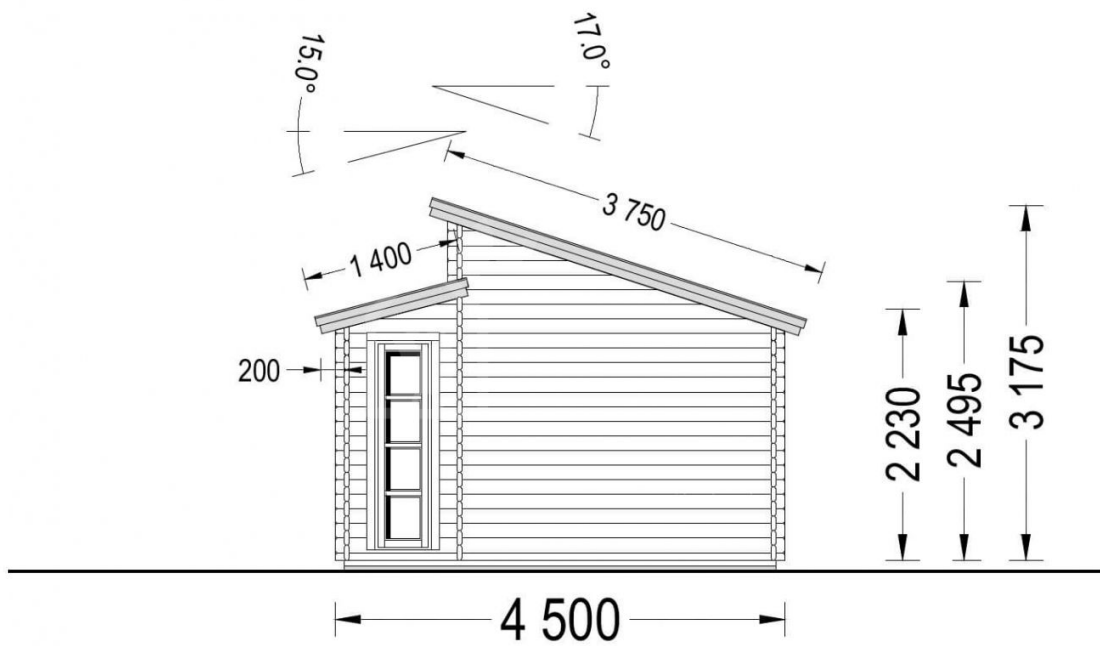
<https://www.quick-garden.co.uk/garden-log-cabin-alabama-34-mm-4-5x4-5-m-15x15-20-m2.html>

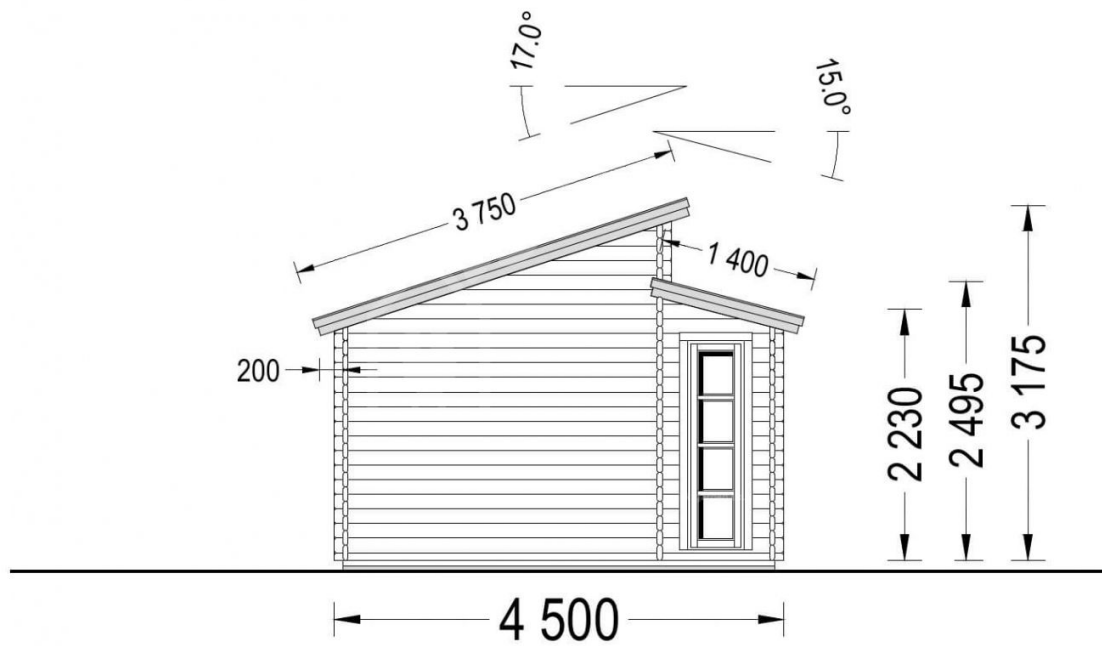


**Finance available. Contact us!**

## Specifications & detailed sketches







## Product specifications

|                                   |  |
|-----------------------------------|--|
| Material                          | Slow grown spruce                      |
| Doors                             | 161cm x 192cm (1 unit)                 |
| Roof Area                         | 26 m²                                  |
| Floor area                        | 20 m²                                  |
| Windows                           | 70cm x 192cm (4 units)                 |
| Eaves height                      | 273 cm                                 |
| Ridge Height                      | 358 cm                                 |
| Roof                              | 19 - 20mm thick tongue & groove boards |
| Floor                             | 19 - 20mm thick tongue & groove boards |
| Wall                              | 34 mm                                  |
| Wood Treatment                    | Optional                               |
| Anti Rot Warranty                 | 10 Year                                |
| Total Number of Rooms             | 1                                      |
| Internal dimensions (WxD)         | 419 x 419 cm                           |
| Roof Covering Material            | Optional                               |
| External dimensions (WxD), Metric | 448 x 448 cm                           |

## Select product features according to your needs

|                                       |                 |          |
|---------------------------------------|-----------------|----------|
| Clear water-based primer for interior |                 | +£175.00 |
| Steel gutter system Ruukki            | Anthracite Grey | +£658.00 |
| TIKKURILA Ultra Classic paints        | Brown           | +£338.00 |
|                                       | Yellow          | +£446.00 |
|                                       | White           | +£322.00 |
|                                       | Clear           | +£194.00 |
| Bitumen roofing shingles + underlay   | Red shingles    | +£466.00 |
|                                       | Black shingles  | +£466.00 |
|                                       | Green shingles  | +£466.00 |

|                       |                                     |               |
|-----------------------|-------------------------------------|---------------|
| Internal WC Room Kit  |                                     | +£459.00      |
| Terrano metal roofing |                                     | +£2,281.00    |
| Timber frame base     | With metal ground screws (4.3x4.3m) | +£1,660.00    |
|                       | With PVC pedestals (4.3x4.3m)       | +£990.00      |
| Woodshed 2.2m x 1.44m |                                     | From +£599.00 |
| Vinyl flooring        | Grey                                | +£1,000.00    |
|                       | Oak                                 | +£1,000.00    |

## Customer Service

### Free delivery \*

Mainland England and Wales

4 - 8 working days for products in stock

4 - 8 weeks for products not in stock or custom-made products

Mainland Scotland

8 - 15 working days for products in stock

4 - 8 weeks for products not in stock or custom-made products

\* An extra charge for deliveries to mainland Scotland applies only for items which are priced under £3000. In such cases you will find these charges on each product page. For all items whose price is over £3000, delivery to mainland Scotland is free of charge.

---

### Payment

We accept card and bank payments.

To submit your order, you can either choose to pay a deposit of 20% of the total price or to pay the whole price in one go.

---

### Planning permission

Contact us for any advice you may need regarding basic planning permission or building regulation matters. We will always be happy to help you.

---

### 10 yrs. warranty

All garden buildings with a wall thickness of at least 34mm come with a 10-year anti-rot guarantee. Structures with 28mm wall thickness come with a corresponding 5-year anti-rot guarantee.