



Garden Log Cabin STRONGHOLD (34+34 mm + Insulation), 3x6 m (10'x20'), 18 m²

Product #AV1857

- Interchange the opposite walls!
- Premium windows & doors
- Tongue & Groove floorboards included
- Hardware kit included
- Window and door seals included
- Storm braces included
- Pure glass – no cheap plastic
- Reliable floor bearers
- Polite & Convenient delivery
- Made while protecting the forests
- Better resistance to rot & mould
- Moisture resistant door and windows
- Reinforced roof construction
- Secure locks & hinges
- Direct from the factory

£7,649.00

~~£7,799.00~~ / You save £150.00

The price includes:

wooden building kit (walls, roof, floor), insulation, double glazed wooden doors & windows, hardware kit, delivery, offloading, VAT.

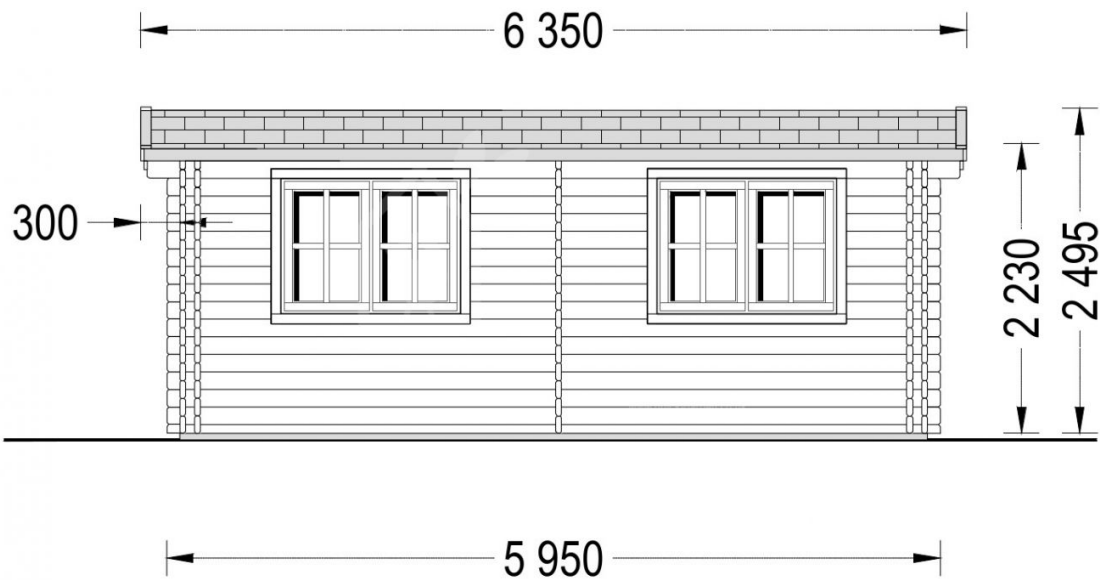
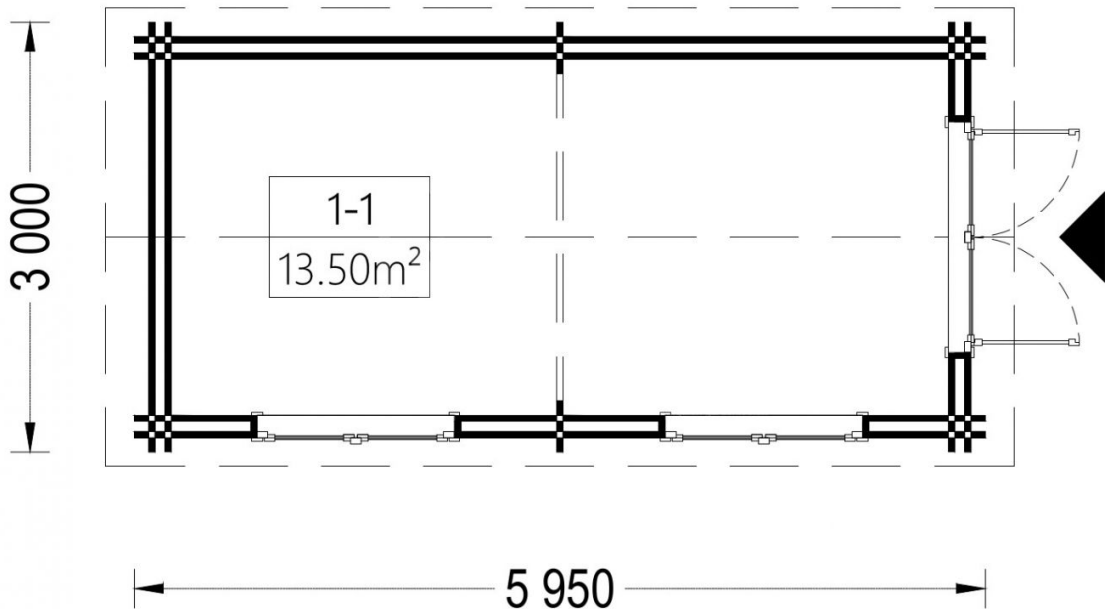
Visit our website to make sure this is the current price:

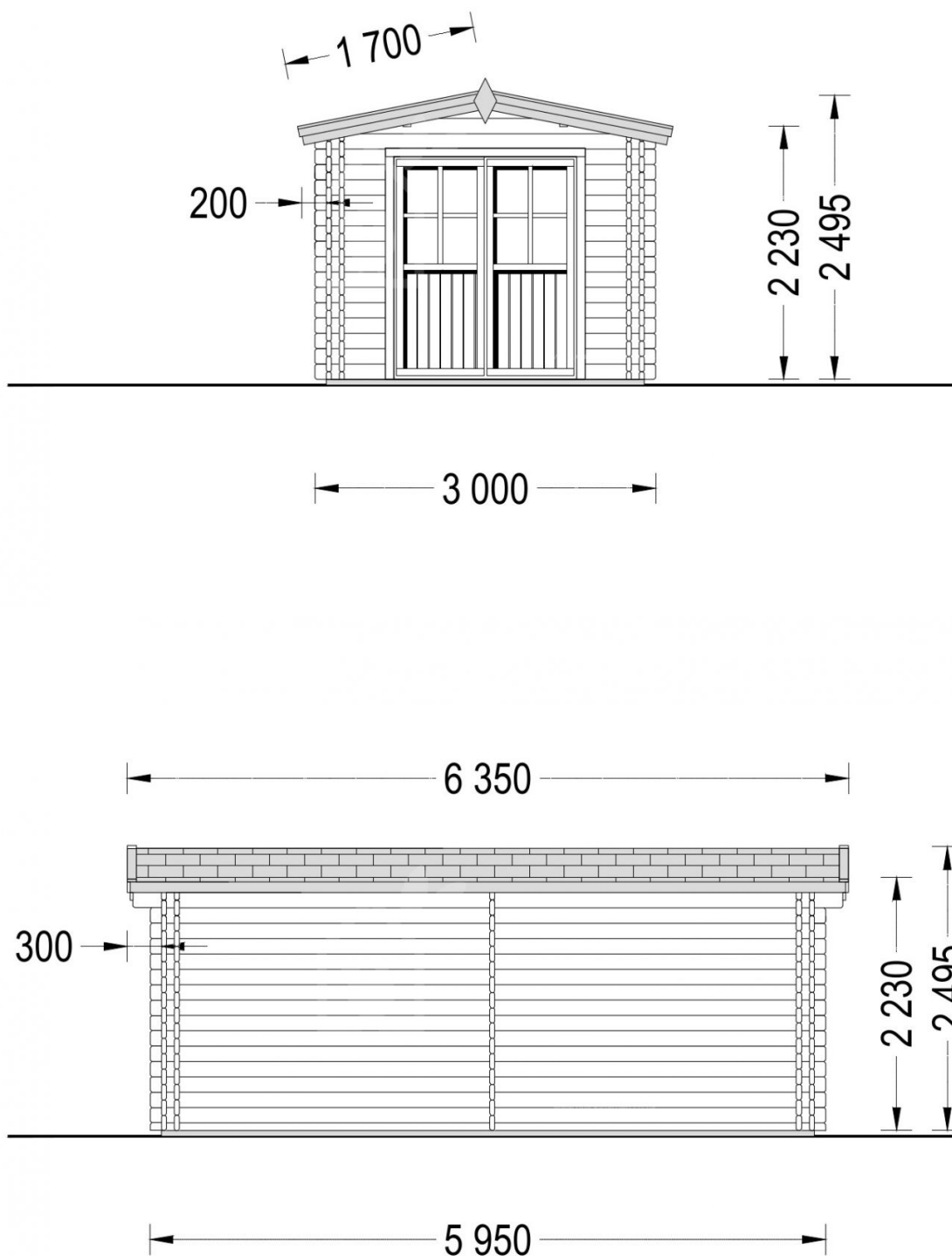
<https://www.quick-garden.co.uk/garden-log-cabin-stronghold-34-34-mm-insulation-3x6-m-10x20-18-m2.html>

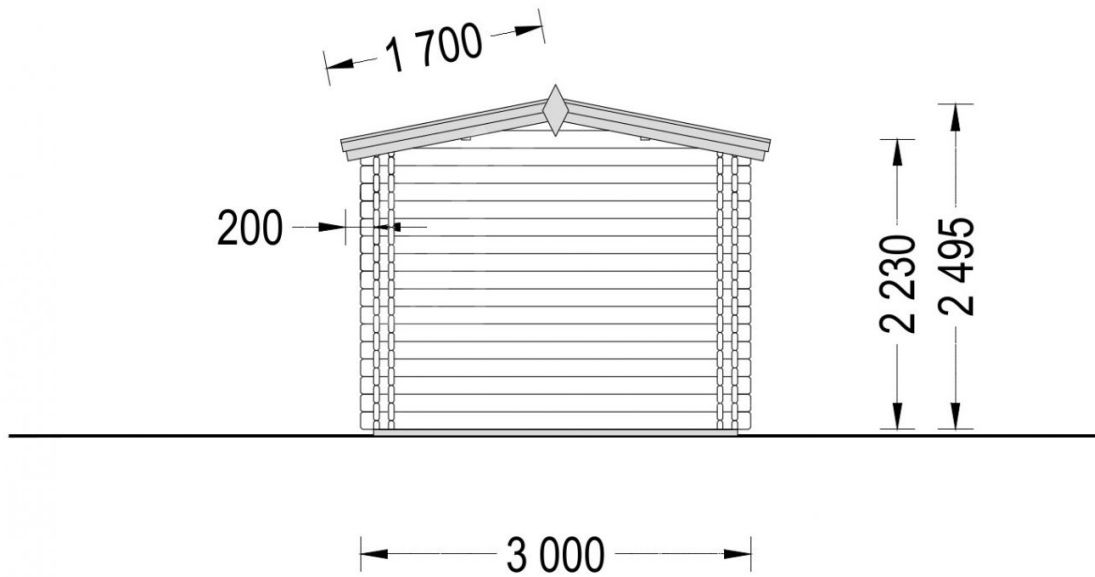


Finance available. Contact us!

Specifications & detailed sketches







Product specifications

Material	Slow grown spruce
Doors	161cm x 192cm (1 unit)
Floor area	18 m ²
Windows	138cm x 105cm (2 units)
Eaves height	208 cm
Ridge Height	249 cm
Roof	20 mm tongue & groove boards + 25 mm insulation
Roof Overhang (Front, Side, Back)	20cm (7")
Floor	20 mm tongue & groove boards + 25 mm insulation
Wall	34 mm + 25 mm insulation + 34 mm
Wood Treatment	Optional
Anti Rot Warranty	10 Year
Total Number of Rooms	1
Internal dimensions (WxD)	571 x 271 cm
Minimum Base Required	284cm x 584cm
Roof Covering Material	Optional
External dimensions (WxD), Metric	300 x 600 cm

Select product features according to your needs

Storage shed 2.7m x 1.6m		From +£1,176.00
Vinyl flooring	Grey	+£912.00
	Oak	+£912.00
Timber frame base	With metal ground screws	+£1,476.00
	(2.8x5.75m)	+£916.00
	With PVC pedestals (2.8x5.75m)	
Insulation package		+£0.00

Terrano metal roofing		+£1,803.00
Internal WC Room Kit		+£459.00
Recuperator VL-80U5-E		+£704.00
Woodshed 2.2m x 1.44m		From +£599.00
Clear water-based primer for interior		+£140.00
PVC windows & doors (Anthracite)		+£3,904.00
PVC windows & doors (White)		+£3,098.00
Bitumen roofing shingles + underlay	Red shingles	+£396.00
	Black shingles	+£396.00
	Green shingles	+£396.00
Wooden canopy 3m x 1.5m		From +£452.00
TIKKURILA Ultra Classic paints	White	+£161.00
	Yellow	+£223.00
	Brown	+£169.00
	Clear	+£194.00
Steel gutter system Ruukki	Anthracite Grey	+£744.00
Metal roofing	Red	+£1,388.00
	Green	+£1,388.00
	Black	+£1,388.00

Customer Service

Free delivery *

Mainland England and Wales

4 - 8 working days for products in stock

4 - 8 weeks for products not in stock or custom-made products

Mainland Scotland

8 - 15 working days for products in stock

4 - 8 weeks for products not in stock or custom-made products

* An extra charge for deliveries to mainland Scotland applies only for items which are priced under £3000. In such cases you will find these charges on each product page. For all items whose price is over £3000, delivery to mainland Scotland is free of charge.

Payment

We accept card and bank payments.

To submit your order, you can either choose to pay a deposit of 20% of the total price or to pay the whole price in one go.

Planning permission

Contact us for any advice you may need regarding basic planning permission or building regulation matters. We will always be happy to help you.

10 yrs. warranty

All garden buildings with a wall thickness of at least 34mm come with a 10-year anti-rot guarantee. Structures with 28mm wall thickness come with a corresponding 5-year anti-rot guarantee.