



**Garden Office PREMIUM (SIP Panels), 5x3 m  
(16'x10'), 15 m<sup>2</sup>**

Product #AV388-2

- Made while protecting the forests
- The most popular in the UK!
- The best insulation you can find
- Harder than a rock
- Fast & Easy installation
- Natural trim only
- PVC windows and doors
- Allergy free materials only
- Lifetime garden rooms
- Firestone EPDM roofing

**£15,500.00**

£15,936.00 / You save £436.00

**The price includes:**

SIP (structural insulated panel) building kit (walls, external & internal cladding, roof, floor), external PVC doors & windows (anthracite), EPDM roof covering, hardware kit, delivery, offloading, VAT.

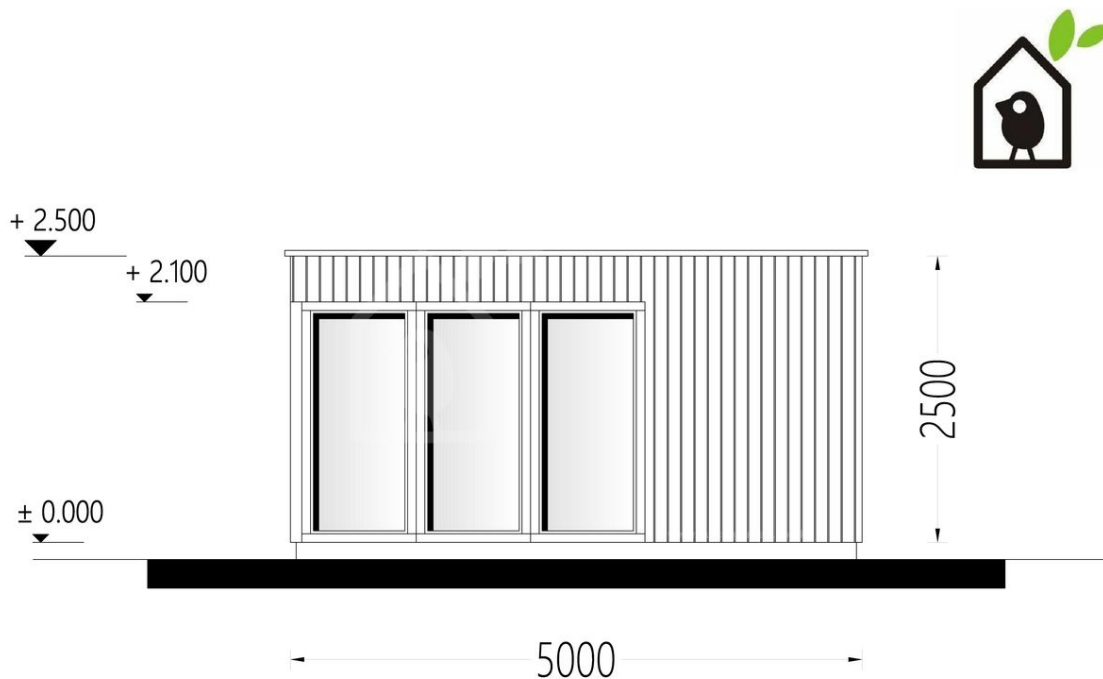
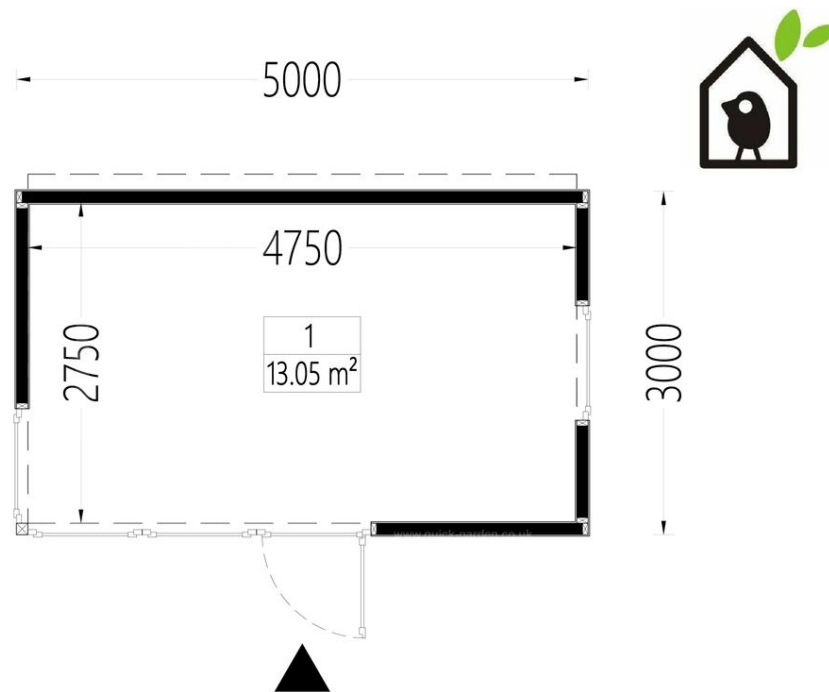
Visit our website to make sure this is the current price:

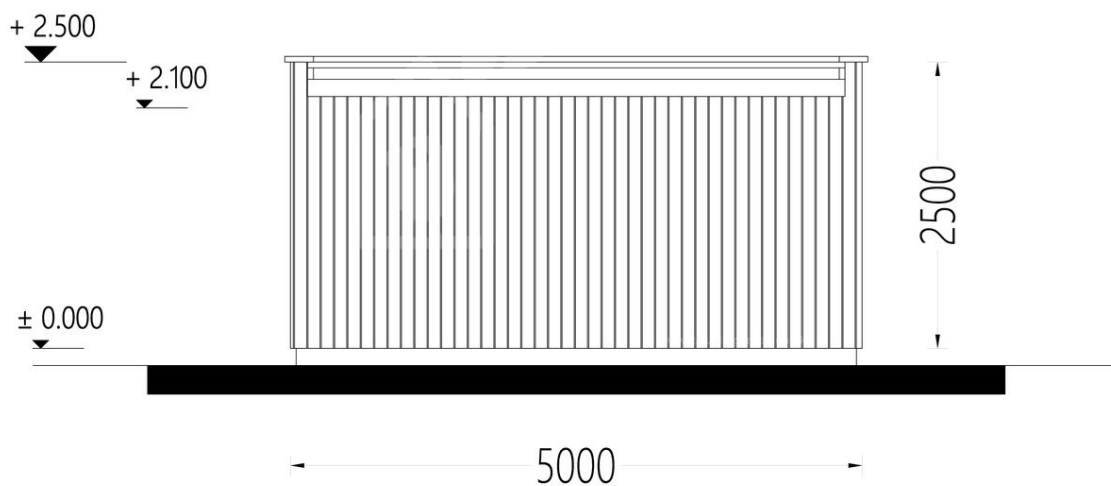
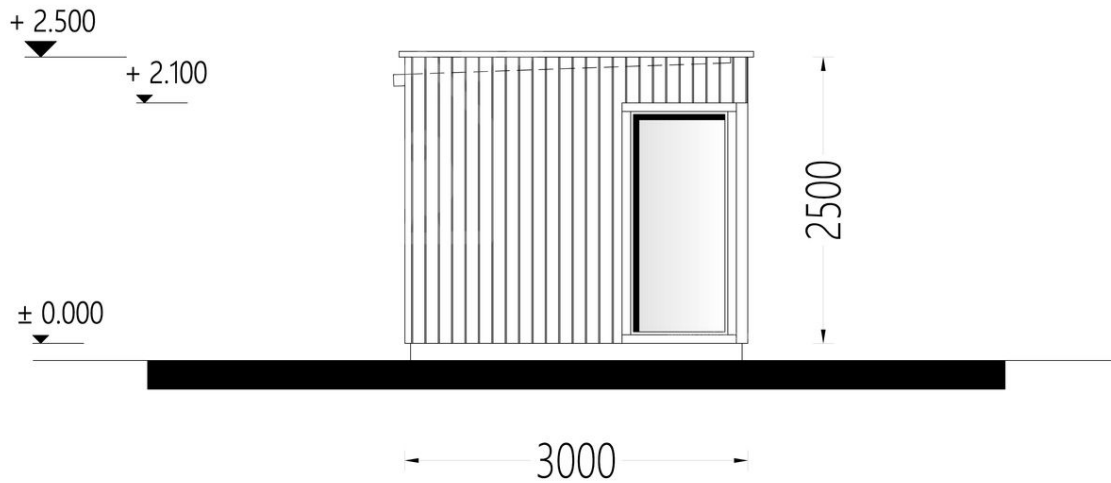
<https://www.quick-garden.co.uk/garden-office-premium-insulated-sips-5x3-m.html>

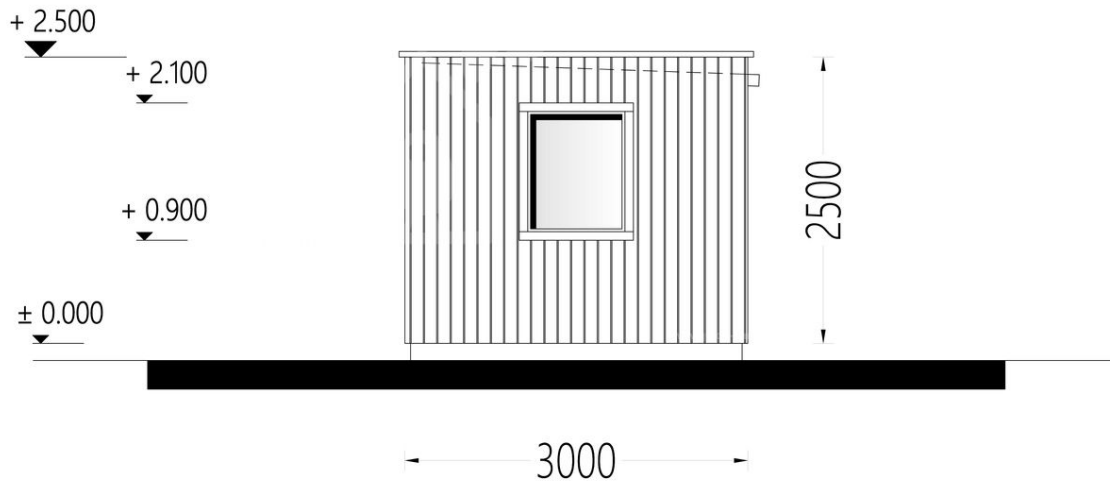


**Finance available. Contact us!**

## Specifications & detailed sketches







## Product specifications

Floor area	15 m <sup>2</sup>
Material	SIPs panels
Roof	Wood trim + 174mm SIPs panel
Roof Covering Material	EPDM Roof Covering Material
Roof Area	17 m <sup>2</sup>
Roof Overhang (Front, Side, Back)	10cm
External dimensions (WxD), Metric	500 x 300 cm
Living space	13,05 m <sup>2</sup>
Wall	Wood trim + 124mm SIPs panel + Wood trim
Minimum Base Required	500cm x 300cm
Eaves height	235 cm
Ridge Height	249 cm
Floor	50mm insulation + Laminate
Doors	100cm x 195 cm (1 psc.)
Windows	100cm x 195 cm (3 psc.), 100cm x 110cm
Anti Rot Warranty	10 Year
Wood Treatment	Optional

## Select product features according to your needs

Internal WC Room Kit		+£459.00
Timber frame base	With metal ground screws (5x3m)	+£1,246.00
	With PVC pedestals (5x3m)	+£806.00
Woodshed 2.2m x 1.44m		From +£599.00
Steel gutter system Ruukki	Anthracite Grey	+£389.00
Pure White Wood Fibre Board		+£400.00

---

Terrace kit (5x2 m)	+£1,410.00
---------------------	------------

---

## Customer Service

### Free delivery \*

Mainland England and Wales

4 - 8 working days for products in stock

4 - 8 weeks for products not in stock or custom-made products

Mainland Scotland

8 - 15 working days for products in stock

4 - 8 weeks for products not in stock or custom-made products

\* An extra charge for deliveries to mainland Scotland applies only for items which are priced under £3000. In such cases you will find these charges on each product page. For all items whose price is over £3000, delivery to mainland Scotland is free of charge.

---

### Payment

We accept card and bank payments.

To submit your order, you can either choose to pay a deposit of 20% of the total price or to pay the whole price in one go.

---

### Planning permission

Contact us for any advice you may need regarding basic planning permission or building regulation matters. We will always be happy to help you.

---

### 10 yrs. warranty

All garden buildings with a wall thickness of at least 34mm come with a 10-year anti-rot guarantee. Structures with 28mm wall thickness come with a corresponding 5-year anti-rot guarantee.