



## **Garden Office Pod TONIA (34 mm + Cladding), 3x3 m (10' x 10'), 9 m<sup>2</sup>**

Product #AV2685

- Interchange the opposite walls!
- Tongue & Groove floorboards included
- Hardware kit included
- Window and door seals included
- Storm braces included
- Pure glass – no cheap plastic
- Reliable floor bearers
- Polite & Convenient delivery
- Made while protecting the forests
- Better resistance to rot & mould
- Moisture resistant door and windows
- Reinforced roof construction
- Secure locks & hinges
- Direct from the factory
- Fast & Easy installation
- Natural trim only
- Allergy free materials only

**£4,550.00**

~~£4,639.00~~ / You save £89.00

### **The price includes:**

wooden building kit (walls, external cladding, roof, floor), double glazed wooden doors & windows, hardware kit, delivery, offloading, VAT.

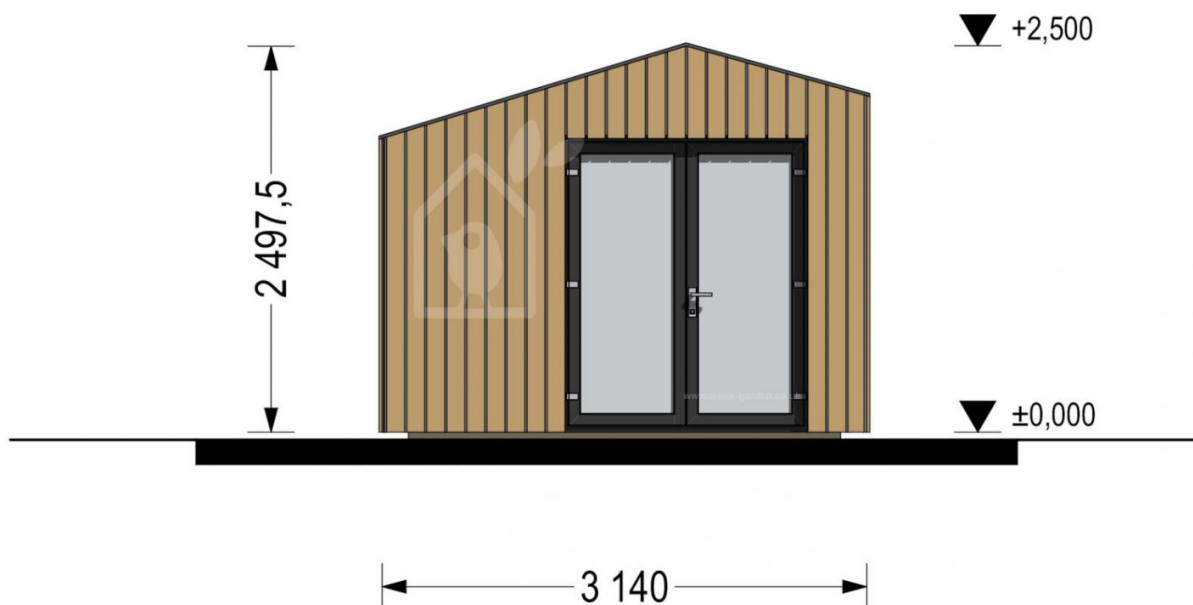
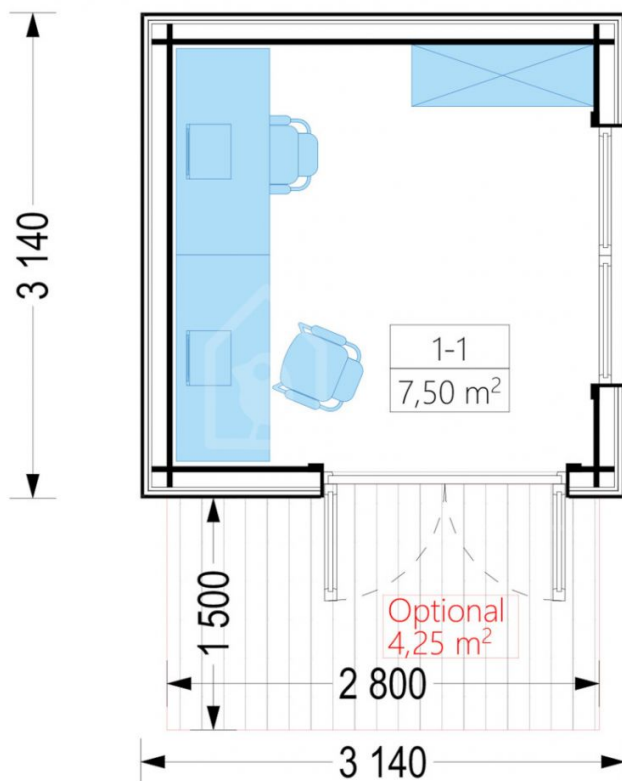
Visit our website to make sure this is the current price:

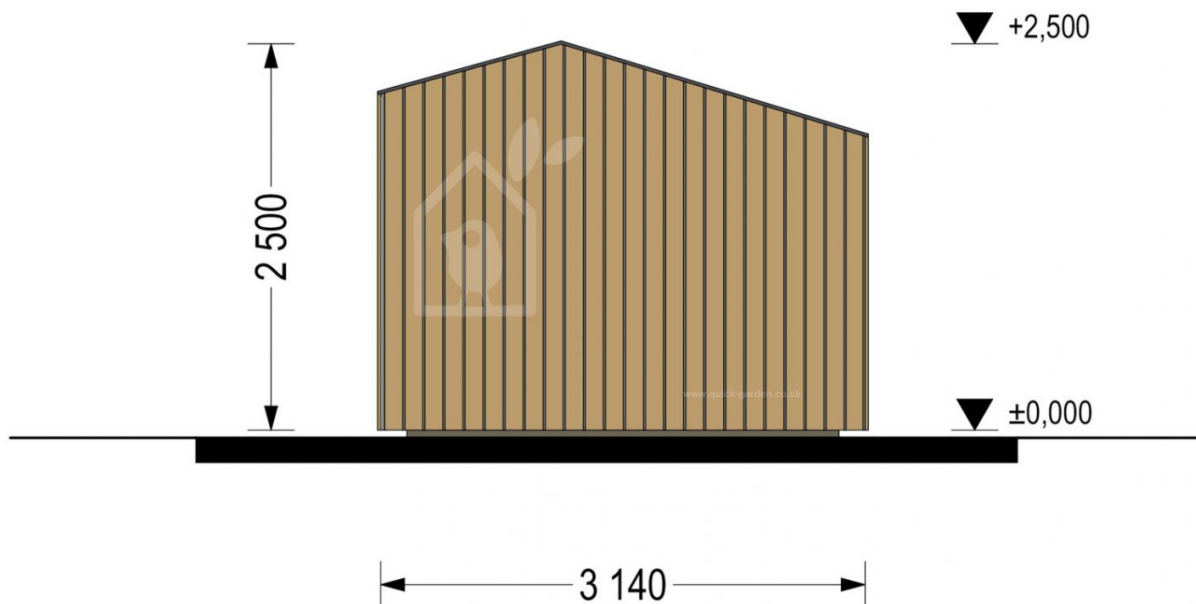
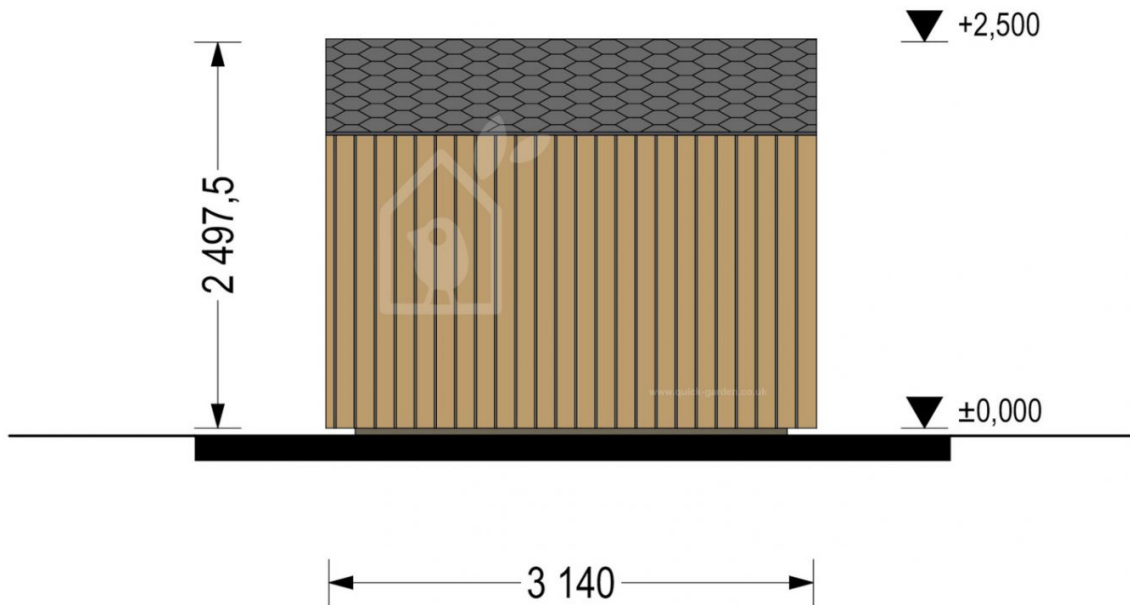
<https://www.quick-garden.co.uk/garden-office-pod-tonia-34mm-cladding-3x3m-10x10-9m2.html>

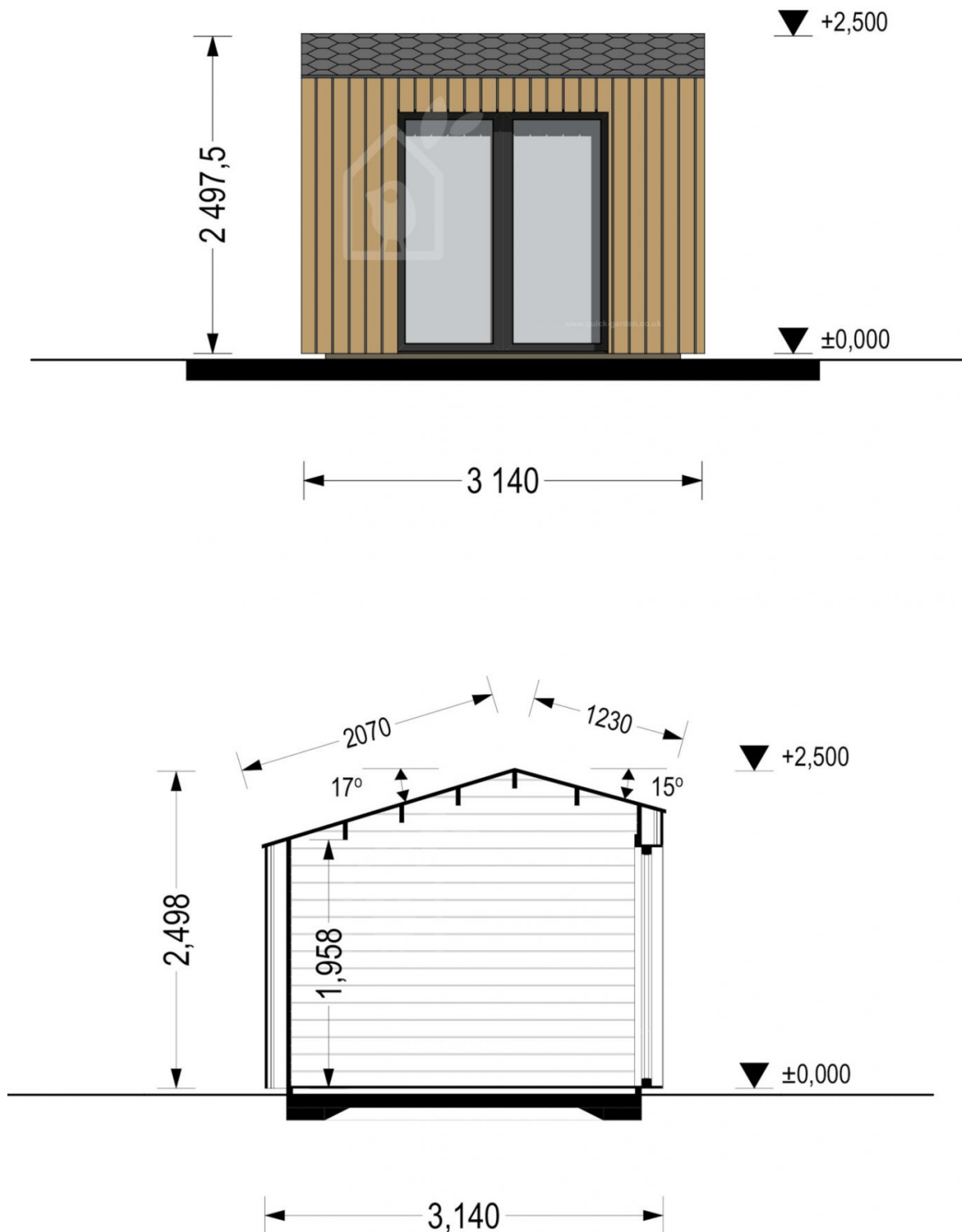


**Finance available. Contact us!**

## Specifications & detailed sketches







## Product specifications

Material	Slow grown spruce
Doors	1 * 161 x 192 cm (Entrance door)
Roof Area	10.50 m <sup>2</sup>
Floor area	7.90 m <sup>2</sup>
Windows	2 * 85 cm x 192 cm (vitrine)
Eaves height	222,8 cm
Ridge Height	249,5 cm
Roof	135 mm wooden rafters; 19 - 20 mm thick tongue & groove boards
Floor	40-50 mm wooden foundation beams ; 19 - 20 mm thick tongue & groove boards
Wall	34 mm wooden log; 100 mm timber frame; 25 mm timber batten (vertical); 25 mm timber batten (horizontal); 18 - 20 mm timber cladding
Wood Treatment	Optional
Roof Slope Ratio	15°/17°
Anti Rot Warranty	10 Year
Total Number of Rooms	1
Roof Covering Material	Optional
External dimensions (WxD), Metric	314 x 214 cm

## Select product features according to your needs

Anthracite Grey	+£572.00
PVC windows & doors (White)	+£2,347.00

TIKKURILA Ultra Classic paints	White	+£161.00
	Brown	+£169.00
	Yellow	+£223.00
	Clear	+£97.00
Clear water-based primer for interior		+£105.00
Timber frame base	With metal ground screws (2.8x2.8m)	+£881.00
	With PVC pedestals (2.8x2.8m)	+£596.00
PVC windows & doors (Anthracite)		+£2,952.00
Terrace kit (1.3x2.8m)		+£351.00
Terrano metal roofing		+£1,289.00
Metal roofing	Green	+£1,073.00
	Red	+£1,073.00
	Black	+£1,073.00
Bitumen roofing shingles + underlay	Red Shingles	+£229.00
	Green Shingles	+£229.00
	Black Shingles	+£229.00
Woodshed 2.2m x 1.44m		From +£599.00
Vinyl flooring	Grey	+£560.00
	Oak	+£560.00

## Customer Service

### Free delivery \*

Mainland England and Wales

4 - 8 working days for products in stock

4 - 8 weeks for products not in stock or custom-made products

Mainland Scotland

8 - 15 working days for products in stock

4 - 8 weeks for products not in stock or custom-made products

\* An extra charge for deliveries to mainland Scotland applies only for items which are priced under £3000. In such cases you will find these charges on each product page. For all items whose price is over £3000, delivery to mainland Scotland is free of charge.

---

### Payment

We accept card and bank payments.

To submit your order, you can either choose to pay a deposit of 20% of the total price or to pay the whole price in one go.

---

### Planning permission

Contact us for any advice you may need regarding basic planning permission or building regulation matters. We will always be happy to help you.

---

### 10 yrs. warranty

All garden buildings with a wall thickness of at least 34mm come with a 10-year anti-rot guarantee. Structures with 28mm wall thickness come with a corresponding 5-year anti-rot guarantee.