



Garden Office Pod TONIA (Insulated, 34 mm + Cladding), 3x3 m (10' x 10'), 9 m²

Product #AV2686

- Interchange the opposite walls!
- Tongue & Groove floorboards included
- Hardware kit included
- Window and door seals included
- Storm braces included
- Pure glass – no cheap plastic
- Reliable floor bearers
- Polite & Convenient delivery
- Made while protecting the forests
- Better resistance to rot & mould
- Moisture resistant door and windows
- Reinforced roof construction
- Secure locks & hinges
- Direct from the factory
- Fast & Easy installation
- Natural trim only
- Allergy free materials only

£5,105.00

~~£5,205.00~~ / You save £100.00

The price includes:

wooden building kit (walls, external cladding, roof, floor), insulation, double glazed wooden doors & windows, hardware kit, delivery, offloading, VAT.

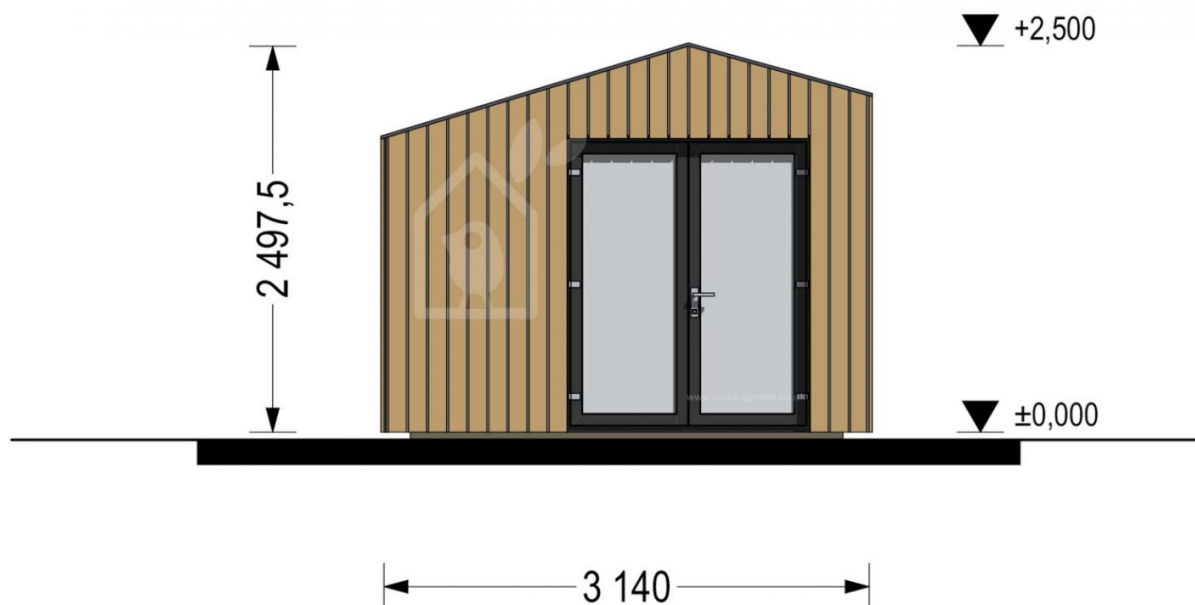
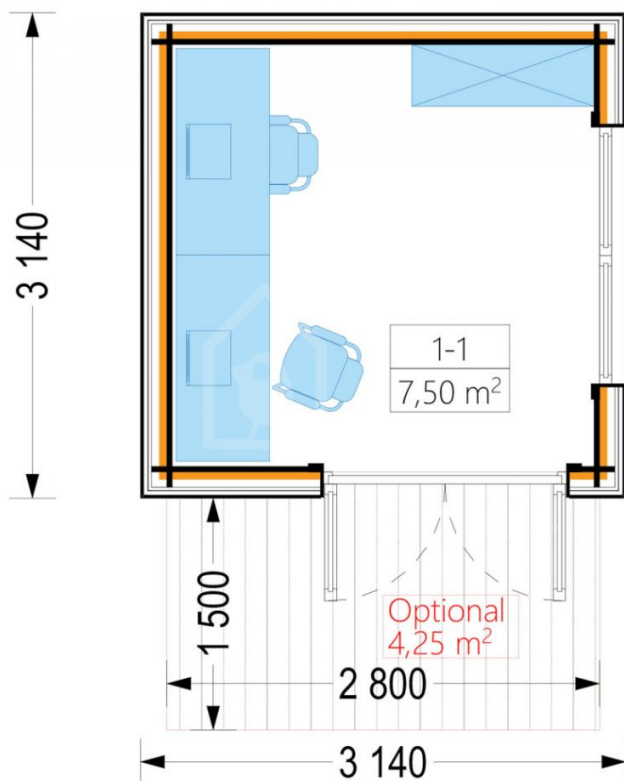
Visit our website to make sure this is the current price:

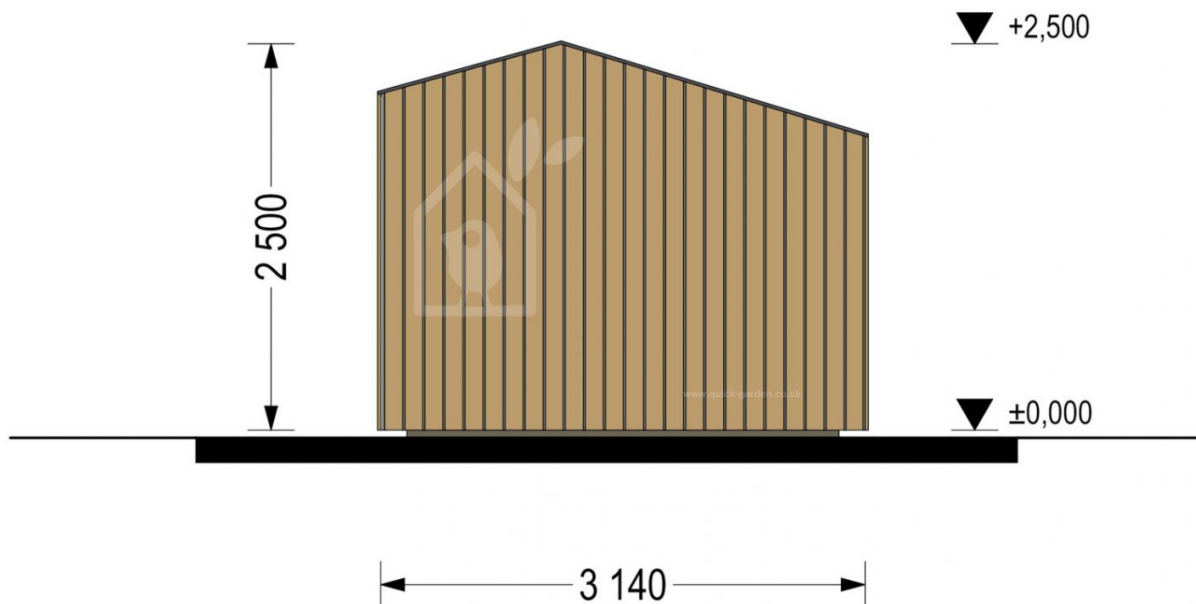
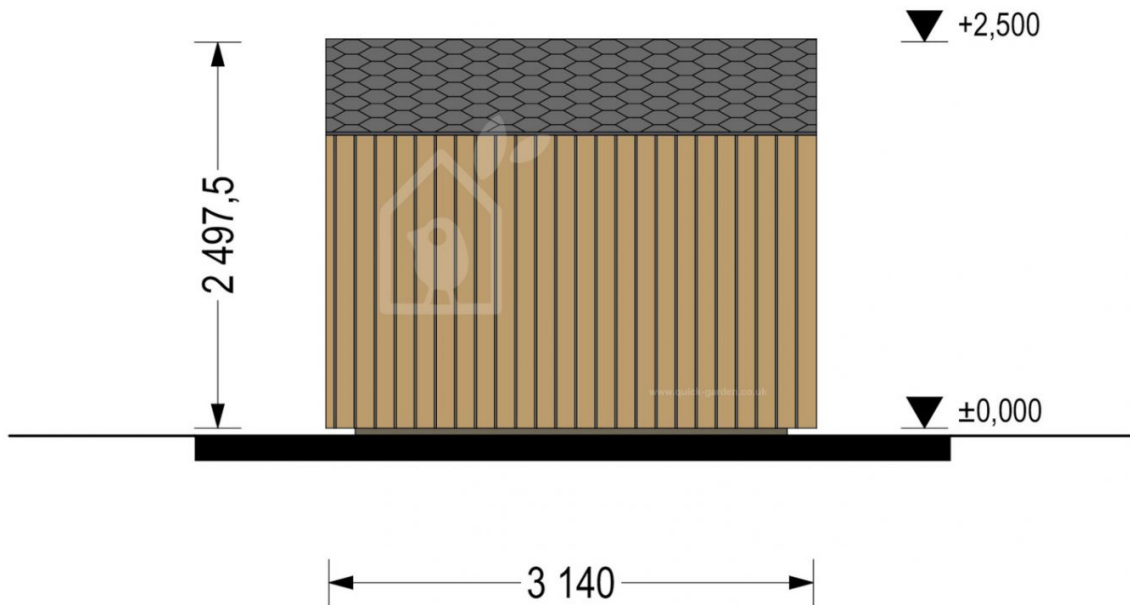
<https://www.quick-garden.co.uk/garden-office-pod-tonia-insulated-34mm-cladding-3x3m-10x10-9m2.html>

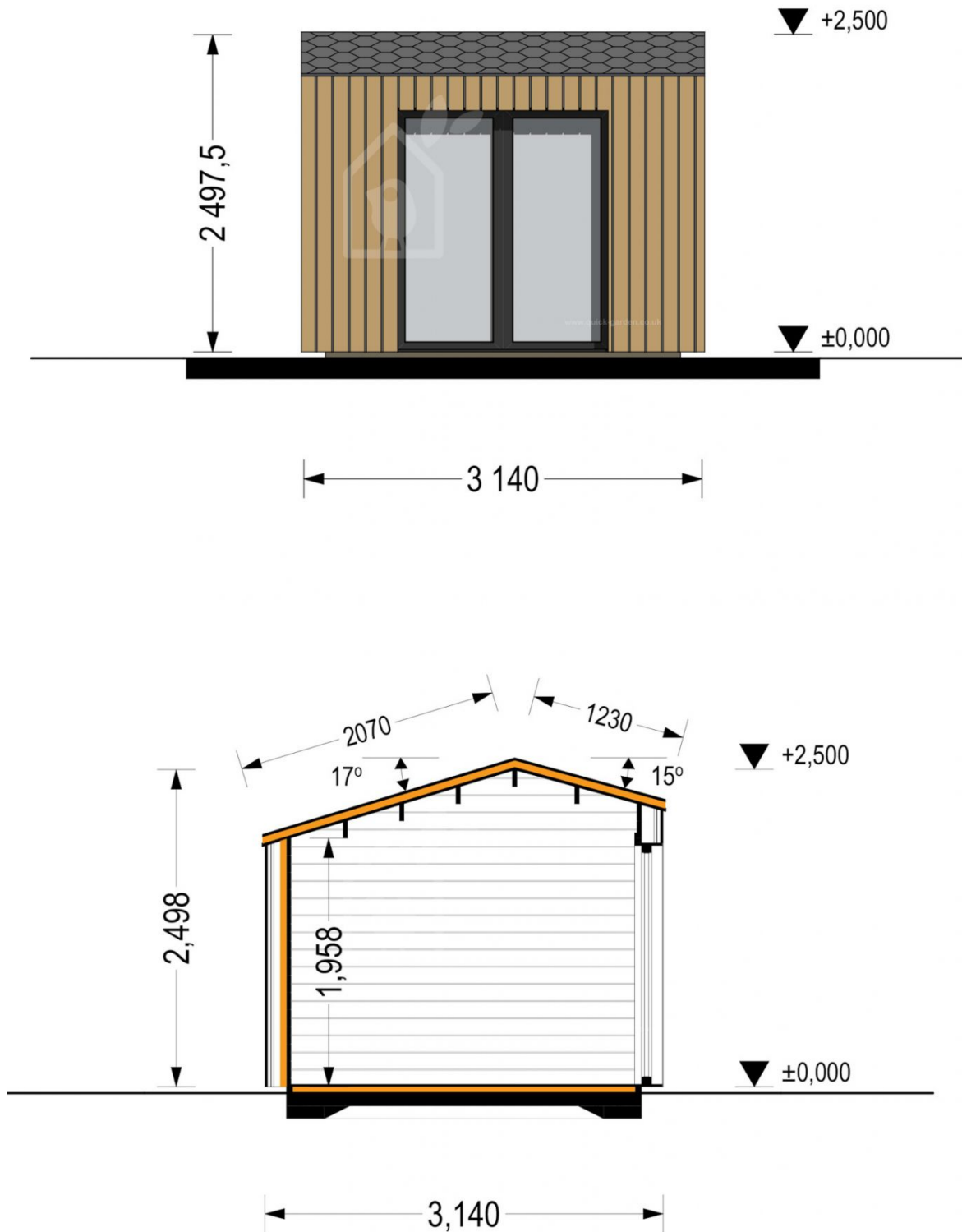


Finance available. Contact us!

Specifications & detailed sketches







Product specifications

Material	Slow grown spruce
Doors	1* 161 cm x 192 cm (Entrance door)
Roof Area	10.50 m²
Floor area	7.90 m²
Windows	2 * 85 cm x 192 cm (vitrine)
Eaves height	222,8 cm
Ridge Height	249,5 cm
Roof	135 mm wooden rafters; 19 - 20 mm thick tongue & groove boards; 25 mm insulation
Floor	40-50 mm wooden foundation beams (with 25 mm insulation); 19 - 20 mm thick tongue & groove boards
Wall	34 mm wooden log; 100 mm timber frame (with 25 mm insulation); 25 mm timber batten (vertical); 25 mm timber batten (horizontal); 18 - 20 mm timber cladding
Wood Treatment	Optional
Roof Slope Ratio	15°/17°
Anti Rot Warranty	10 Year
Total Number of Rooms	1
Roof Covering Material	Optional
External dimensions (WxD), Metric	314 x 314 cm
Volume	3.035

Select product features according to your needs

TIKKURILA Ultra Classic paints	Yellow	+£223.00
	Clear	+£97.00
	Brown	+£169.00
	White	+£161.00

Vinyl flooring	Grey	+£560.00
	Oak	+£560.00
Woodshed 2.2m x 1.44m		From +£599.00
Bitumen roofing shingles + underlay	Red Shingles	+£229.00
	Black Shingles	+£229.00
	Green Shingles	+£229.00
Metal roofing	Green	+£1,073.00
	Red	+£1,073.00
	Black	+£1,073.00
Terrano metal roofing		+£1,289.00
Terrace kit (1.3x2.8m)		+£351.00
PVC windows & doors (Anthracite)		+£2,952.00
Insulation package		+£0.00
Anthracite Grey		+£572.00
Timber frame base	With metal ground screws (2.8x2.8m)	+£881.00
	With PVC pedestals (2.8x2.8m)	+£596.00
Recuperator VL-80U5-E		+£704.00
Clear water-based primer for interior		+£105.00
PVC windows & doors (White)		+£2,347.00

Customer Service

Free delivery *

Mainland England and Wales

4 - 8 working days for products in stock

4 - 8 weeks for products not in stock or custom-made products

Mainland Scotland

8 - 15 working days for products in stock

4 - 8 weeks for products not in stock or custom-made products

* An extra charge for deliveries to mainland Scotland applies only for items which are priced under £3000. In such cases you will find these charges on each product page. For all items whose price is over £3000, delivery to mainland Scotland is free of charge.

Payment

We accept card and bank payments.

To submit your order, you can either choose to pay a deposit of 20% of the total price or to pay the whole price in one go.

Planning permission

Contact us for any advice you may need regarding basic planning permission or building regulation matters. We will always be happy to help you.

10 yrs. warranty

All garden buildings with a wall thickness of at least 34mm come with a 10-year anti-rot guarantee. Structures with 28mm wall thickness come with a corresponding 5-year anti-rot guarantee.