



**Log Cabin DREUX (44+44 mm + Insulation),
6x6 m (20'x20'), 36 m²**

Product #AV031-3

- Interchange the opposite walls!
- Premium windows & doors
- Tongue & Groove floorboards included
- Hardware kit included
- Window and door seals included
- Storm braces included
- Pure glass – no cheap plastic
- Reliable floor bearers
- Polite & Convenient delivery
- Made while protecting the forests
- Better resistance to rot & mould
- Moisture resistant door and windows
- Reinforced roof construction
- Secure locks & hinges
- Direct from the factory

£13,516.00

£13,781.00 / You save £265.00

The price includes:

wooden building kit (walls, roof, floor),
insulation, double glazed wooden
doors & windows, hardware kit,
delivery, offloading, VAT.

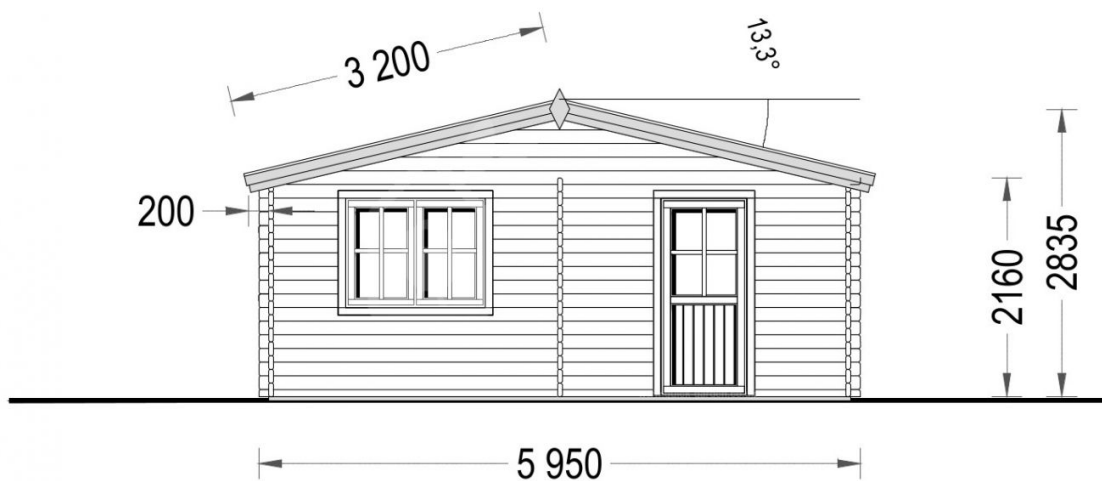
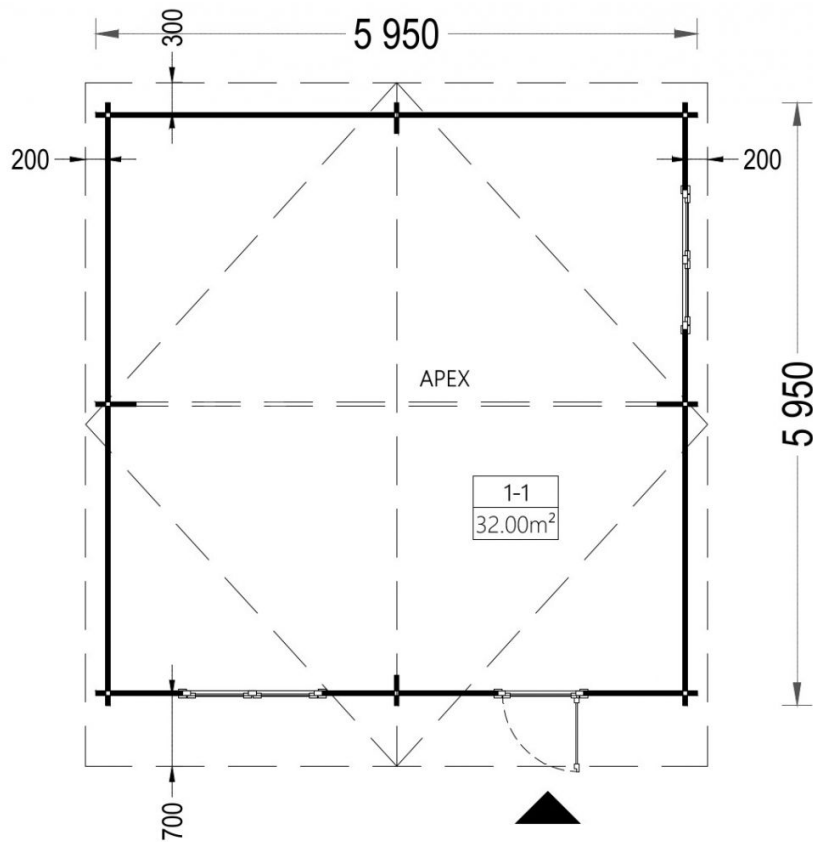
Visit our website to make sure this is
the current price:

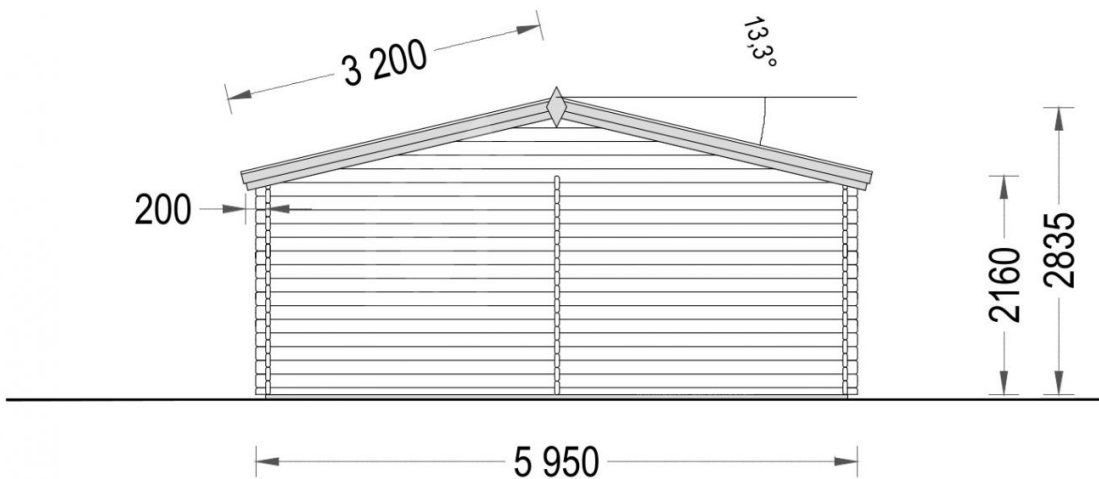
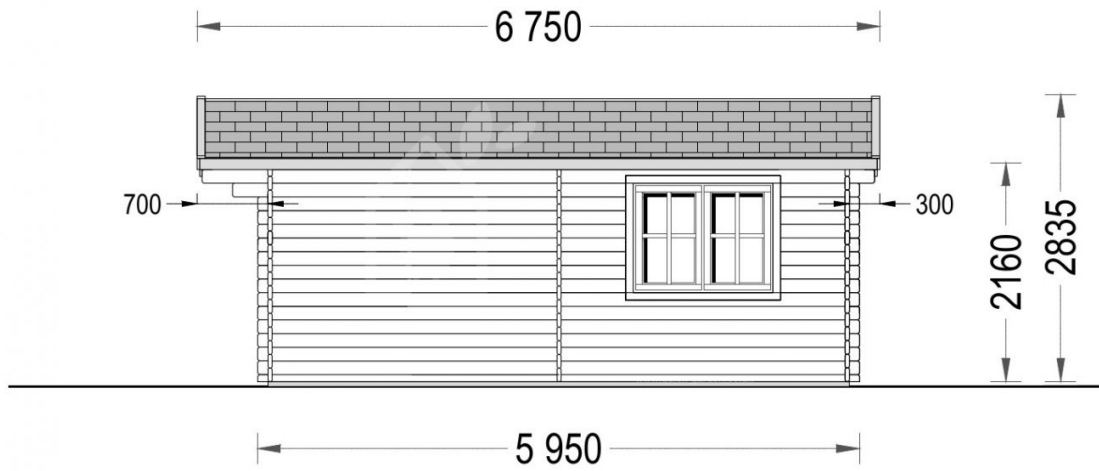
<https://www.quick-garden.co.uk/insulated-log-cabin-dreux-6m-x-6m-20x20-ft-twin-skin.html>

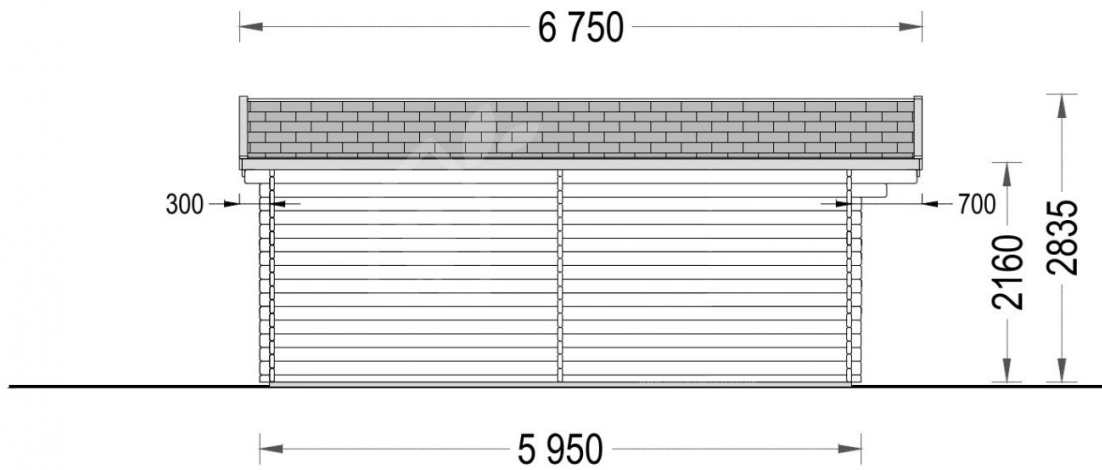


Finance available. Contact us!

Specifications & detailed sketches







Product specifications

Wall	44 mm + 25 mm insulation + 44 mm
Material	Slow grown spruce
Doors	85cm x 192cm (1 unit)
Floor area	36 m ²
Windows	138cm x 105cm (2 units)
Eaves height	216 cm
Ridge Height	283,5 cm
Roof	20 mm tongue & groove boards + 25 mm insulation
Roof Overhang (Front, Side, Back)	70cm in the front and 20cm all around.
Floor	20 mm tongue & groove boards + 25 mm insulation
Anti Rot Warranty	10 Year
Total Number of Rooms	1
Internal dimensions (WxD)	544 x 544 cm
Minimum Base Required	575cm x 575cm
Roof Covering Material	Optional
External dimensions (WxD), Metric	600 x 600 cm
Wood Treatment	Optional

Select product features according to your needs

Vinyl flooring	Grey	+£1,704.00
	Oak	+£1,704.00
Timber frame base	With metal ground screws	+£2,875.00
	(5.75x5.75m)	+£1,705.00
	With PVC pedestals (5.75x5.75m)	
Insulation package		+£0.00
Terrano metal roofing		+£2,930.00

Internal WC Room Kit		+£459.00
Recuperator VL-80U5-E		+£704.00
Wooden Terrace 6m x 1.5m		+£324.00
Woodshed 2.2m x 1.44m		From +£599.00
PVC windows & doors (White)		+£2,337.00
PVC windows & doors (Anthracite)		+£2,946.00
Bitumen roofing shingles + underlay	Red shingles	+£765.00
	Green shingles	+£765.00
	Black shingles	+£765.00
Clear water-based primer for interior		+£210.00
Metal roofing	Green	+£2,382.00
	Black	+£2,382.00
	Red	+£2,382.00
Steel gutter system Ruukki	Anthracite Grey	+£938.00
TIKKURILA Ultra Classic paints	Yellow	+£446.00
	Brown	+£338.00
	White	+£322.00
	Clear	+£291.00

Customer Service

Free delivery *

Mainland England and Wales

4 - 8 working days for products in stock

4 - 8 weeks for products not in stock or custom-made products

Mainland Scotland

8 - 15 working days for products in stock

4 - 8 weeks for products not in stock or custom-made products

* An extra charge for deliveries to mainland Scotland applies only for items which are priced under £3000. In such cases you will find these charges on each product page. For all items whose price is over £3000, delivery to mainland Scotland is free of charge.

Payment

We accept card and bank payments.

To submit your order, you can either choose to pay a deposit of 20% of the total price or to pay the whole price in one go.

Planning permission

Contact us for any advice you may need regarding basic planning permission or building regulation matters. We will always be happy to help you.

10 yrs. warranty

All garden buildings with a wall thickness of at least 34mm come with a 10-year anti-rot guarantee. Structures with 28mm wall thickness come with a corresponding 5-year anti-rot guarantee.