



Log Cabin House DARLA (44+44 mm + Insulation), 180 m²

Product #AV1860

- Interchange the opposite walls!
- Premium windows & doors
- Tongue & Groove floorboards included
- Hardware kit included
- Window and door seals included
- Storm braces included
- Pure glass – no cheap plastic
- Reliable floor bearers
- Polite & Convenient delivery
- Better resistance to rot & mould
- Moisture resistant door and windows
- Reinforced roof construction
- Secure locks & hinges
- Direct from the factory
- Fast & Easy installation

£76,332.00

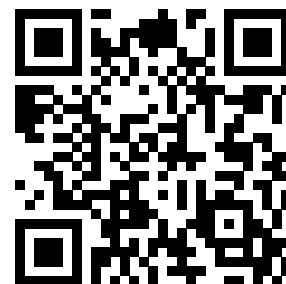
~~£89,109.00~~ / You save
£12,777.00

The price includes:

wooden building kit (walls, roof, floor), wooden staircase, insulation, double glazed wooden doors & windows, hardware kit, delivery, offloading, VAT.

Visit our website to make sure this is the current price:

<https://www.quick-garden.co.uk/AV1860>



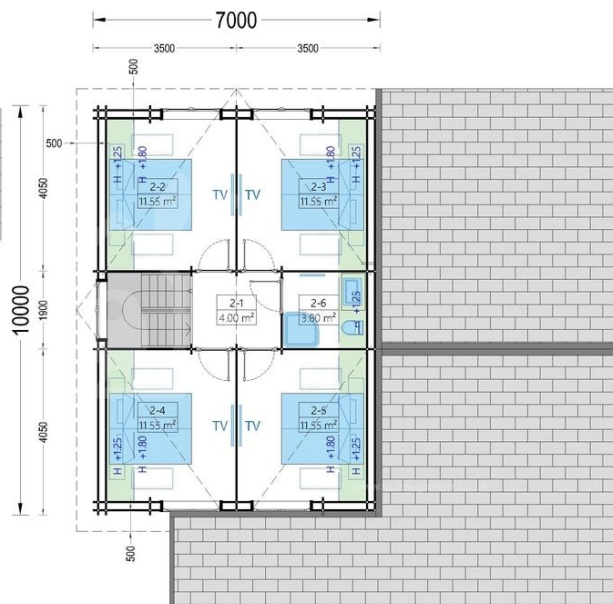
Finance available. Contact us!

Specifications & detailed sketches

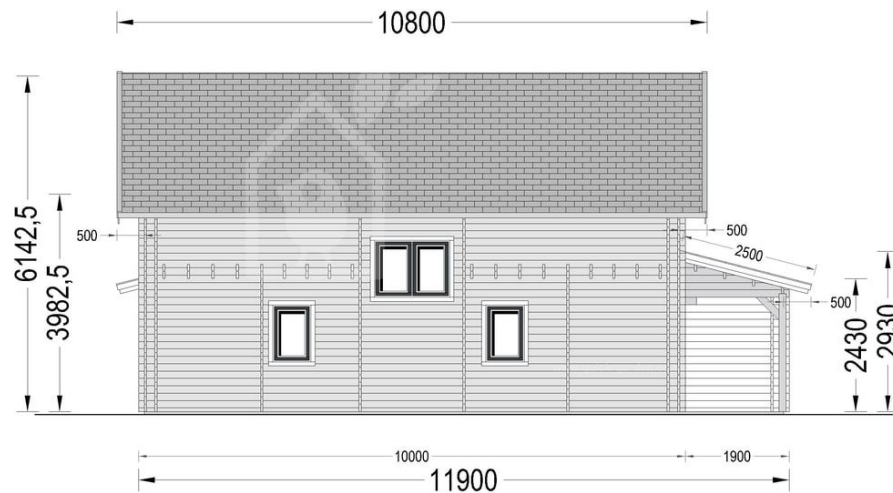
1-1	HALL	17.20m ²
1-2	TECHNICAL ROOM - BOILER	3.65m ²
1-3	LAUNDRY	3.75m ²
1-4	STORAGE AT THE KITCHEN	2.40m ²
1-5	LIVING ROOM, KITCHEN, DINING	39.45m ²
1-6	WC	3.75m ²
1-7	BED ROOM NR. 1	15.65m ²
1-8	WARDROBE	3.55m ²
1-9	BATHROOM	3.85m ²
T-1	COVERED ENTRANCE	10.00m ²
T-2	TERRACE	30.00m ²
		93.25m ²



2-1	STAIRCASE	4.00m ²
2-2	BED ROOM NR. 1	11.55m ²
2-3	BED ROOM NR. 2	11.55m ²
2-4	BED ROOM NR. 3	11.55m ²
2-5	BED ROOM NR. 4	11.55m ²
2-6	BATHROOM	3.80m ²
		54.00m ²







Product specifications

Material	Slow grown spruce
Doors	1 * 85 cm x 192 cm (Entrance), 1 * 70 x 192 cm (internal); 11 * 85 x 192 cm (internal)
Floor area	180 m²
Windows	4* 70 cm x 105 cm; 7* 138 cm x 105 cm; 8* 85 cm x 192 cm (vitrine); 2* 161 cm x 192 cm (balcony door);
Eaves height	243 cm
Ridge Height	614,25 cm
Roof	20 mm tongue & groove boards + 25 mm insulation
Floor	20 mm tongue & groove boards + 25 mm insulation
Wall	44 mm + 25 mm insulation + 44 mm
Wood Treatment	Optional
Roof Slope Ratio	14,3/32,6°
Anti Rot Warranty	10 Year
Living space	147,25 m²
Total Number of Rooms	15
Roof Covering Material	Optional
External dimensions (WxD), Metric	1250 x 1190 cm

Select product features according to your needs

Steel gutter system Ruukki	Anthracite Grey	+£2,067.00
Metal roofing	Black	+£9,568.00
	Green	+£9,568.00
	Red	+£9,568.00

TIKKURILA Ultra Classic paints	Yellow	+£1,338.00
	Brown	+£1,014.00
	White	+£966.00
	Clear	+£776.00
Bitumen roofing shingles + underlay	Red shingles	+£3,394.00
	Green shingles	+£3,394.00
	Black shingles	+£3,394.00
PVC windows & doors (White)		+£11,978.00
PVC windows & doors (Anthracite)		+£15,672.00
Recuperator VL-100U5-E		+£704.00
Terrano metal roofing		+£11,281.00
Insulation package		+£0.00

Customer Service

Free delivery *

Mainland England and Wales

4 - 8 working days for products in stock

4 - 8 weeks for products not in stock or custom-made products

Mainland Scotland

8 - 15 working days for products in stock

4 - 8 weeks for products not in stock or custom-made products

* An extra charge for deliveries to mainland Scotland applies only for items which are priced under £3000. In such cases you will find these charges on each product page. For all items whose price is over £3000, delivery to mainland Scotland is free of charge.

Payment

We accept card and bank payments.

To submit your order, you can either choose to pay a deposit of 20% of the total price or to pay the whole price in one go.

Planning permission

Contact us for any advice you may need regarding basic planning permission or building regulation matters. We will always be happy to help you.

10 yrs. warranty

All garden buildings with a wall thickness of at least 34mm come with a 10-year anti-rot guarantee. Structures with 28mm wall thickness come with a corresponding 5-year anti-rot guarantee.