



## Log Cabin House TOULOUSE (66 mm), 100 m<sup>2</sup> With 20 m<sup>2</sup> Terrace

Product #AV139

- Interchange the opposite walls!
- Premium windows & doors
- Tongue & Groove floorboards included
- Hardware kit included
- Window and door seals included
- Storm braces included
- Pure glass – no cheap plastic
- Reliable floor bearers
- Polite & Convenient delivery
- Made while protecting the forests
- Better resistance to rot & mould
- Moisture resistant door and windows
- Reinforced roof construction
- Secure locks & hinges
- Direct from the factory

**£42,449.00**

~~£43,484.00~~ / You save £1,035.00

### The price includes:

wooden building kit (walls, roof, floor),  
wooden staircase, double glazed  
wooden doors & windows, hardware  
kit, delivery, offloading, VAT.

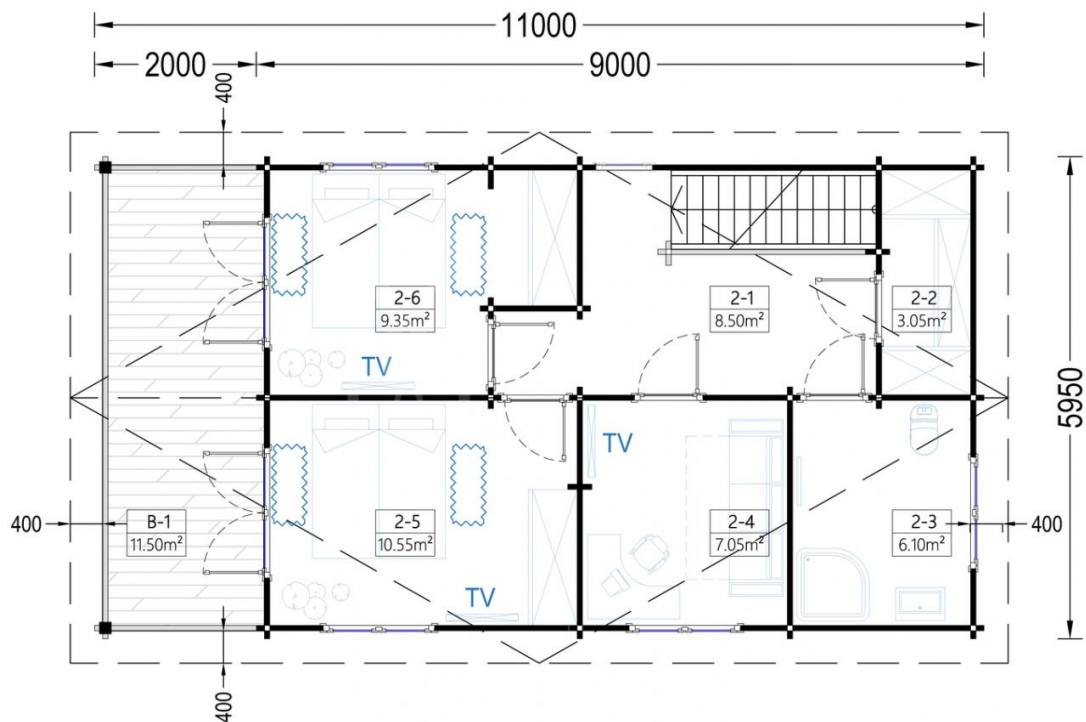
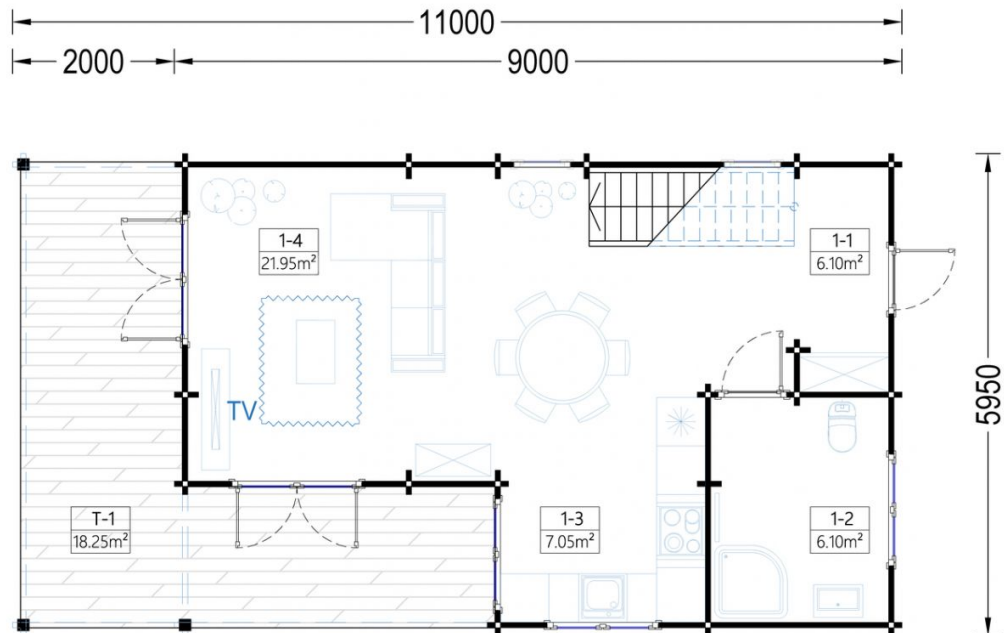
Visit our website to make sure this is  
the current price:

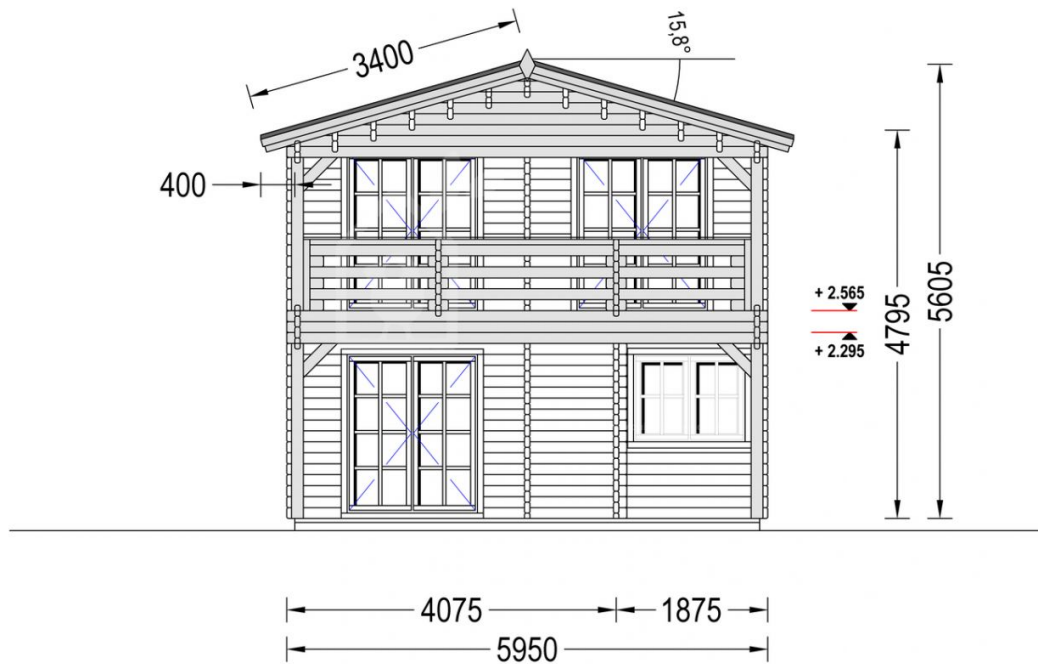
<https://www.quick-garden.co.uk/log-cabin-house-bordeaux-2-storey-6m-x-11m-20x36-ft-66-mm.html>

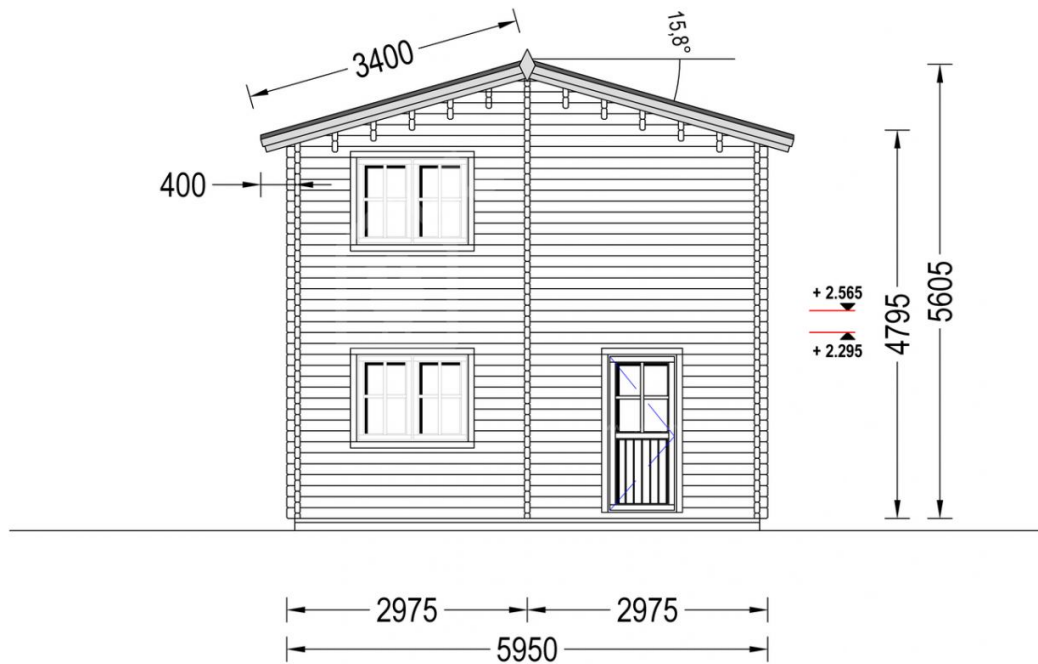


**Finance available. Contact us!**

## Specifications & detailed sketches







## Product specifications

Wall	66 mm
Material	Slow grown spruce
Doors	85cm x 192cm (6 units) and 161cm x 192cm (4 units)
Floor area	91 m <sup>2</sup>
Windows	138cm x 105cm (7 unit) and 70cm x 105cm (4 units)
Eaves height	479 cm
Ridge Height	560 cm
Roof	19 - 20mm thick tongue & groove boards
Floor	18-20mm thick tongue & groove boards
Anti Rot Warranty	10 Year
Total Number of Rooms	7
Roof Covering Material	Optional
External dimensions (WxD), Metric	585,8 x 1116 cm
Wood Treatment	Optional

## Select product features according to your needs

Terrano metal roofing		+£4,705.00
Vinyl flooring	Grey	+£4,784.00
	Oak	+£4,784.00
Storage shed 2.7m x 1.6m		From +£1,176.00
Woodshed 2.2m x 1.44m		From +£599.00
PVC windows & doors (Anthracite)		+£17,146.00
Bitumen roofing shingles + underlay	Red shingles	+£1,363.00
	Green shingles	+£1,363.00
	Black shingles	+£1,363.00
25 mm Roof & Floor insulation		+£1,667.00

Clear water-based primer for interior		+£455.00
PVC windows & doors (White)		+£12,745.00
Metal roofing	Green	+£3,810.00
	Black	+£3,810.00
	Red	+£3,810.00
OptiLight Roof window 55cm x 78cm		+£299.00
Steel gutter system Ruukki	Anthracite Grey	+£1,260.00
TIKKURILA Ultra Classic paints	Yellow	+£892.00
	Brown	+£676.00
	White	+£644.00
	Clear	+£582.00

## Customer Service

### Free delivery \*

Mainland England and Wales

4 - 8 working days for products in stock

4 - 8 weeks for products not in stock or custom-made products

Mainland Scotland

8 - 15 working days for products in stock

4 - 8 weeks for products not in stock or custom-made products

\* An extra charge for deliveries to mainland Scotland applies only for items which are priced under £3000. In such cases you will find these charges on each product page. For all items whose price is over £3000, delivery to mainland Scotland is free of charge.

---

### Payment

We accept card and bank payments.

To submit your order, you can either choose to pay a deposit of 20% of the total price or to pay the whole price in one go.

---

### Planning permission

Contact us for any advice you may need regarding basic planning permission or building regulation matters. We will always be happy to help you.

---

### 10 yrs. warranty

All garden buildings with a wall thickness of at least 34mm come with a 10-year anti-rot guarantee. Structures with 28mm wall thickness come with a corresponding 5-year anti-rot guarantee.