



Log Cabin MARION (34 mm) 7.5x4m (25'x13'), 30 m²

Product #AV1956

- Interchange the opposite walls!
- Premium windows & doors
- Tongue & Groove floorboards included
- Hardware kit included
- Window and door seals included
- Storm braces included
- Pure glass – no cheap plastic
- Reliable floor bearers
- Polite & Convenient delivery
- Made while protecting the forests
- Better resistance to rot & mould
- Moisture resistant door and windows
- Reinforced roof construction
- Secure locks & hinges
- Direct from the factory

£7,186.00

~~£7,327.00~~ / You save £141.00

The price includes:

wooden building kit (walls, roof, floor),
double glazed wooden doors &
windows, hardware kit, delivery,
offloading, VAT.

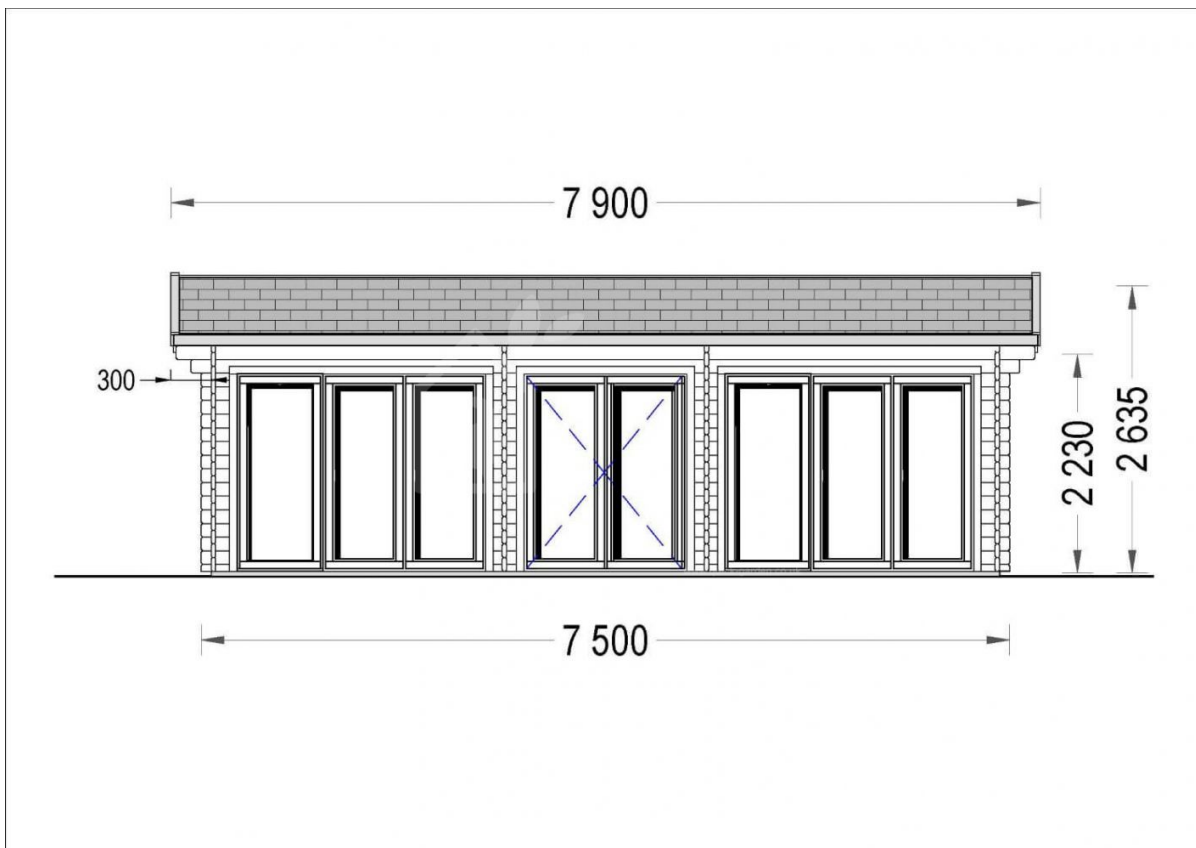
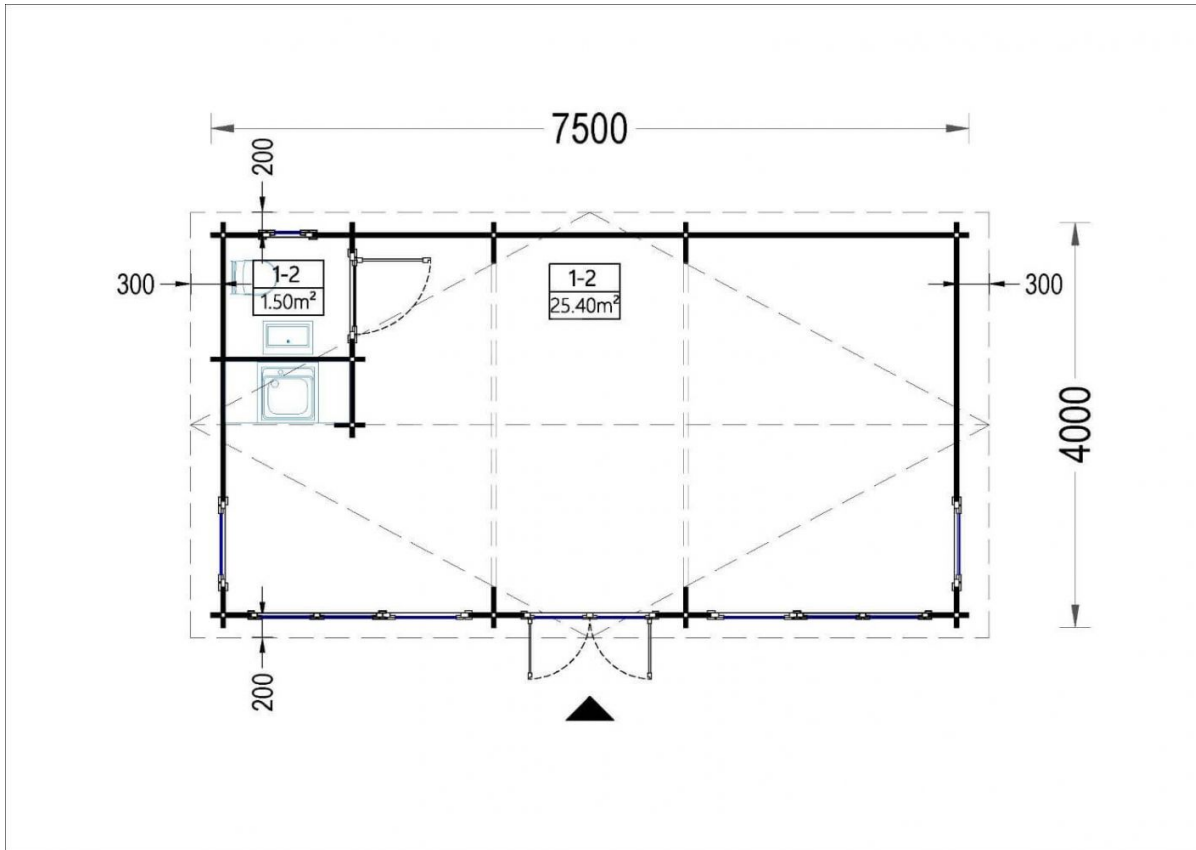
Visit our website to make sure this is
the current price:

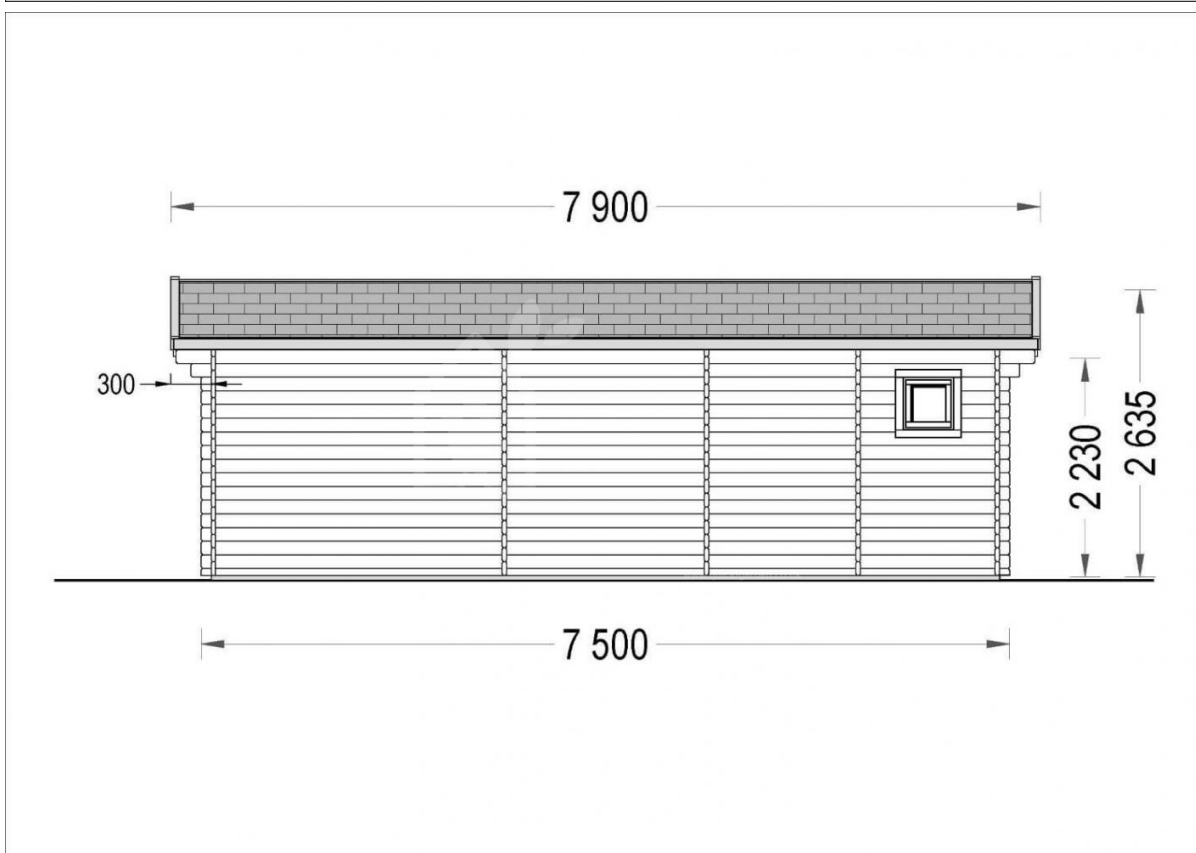
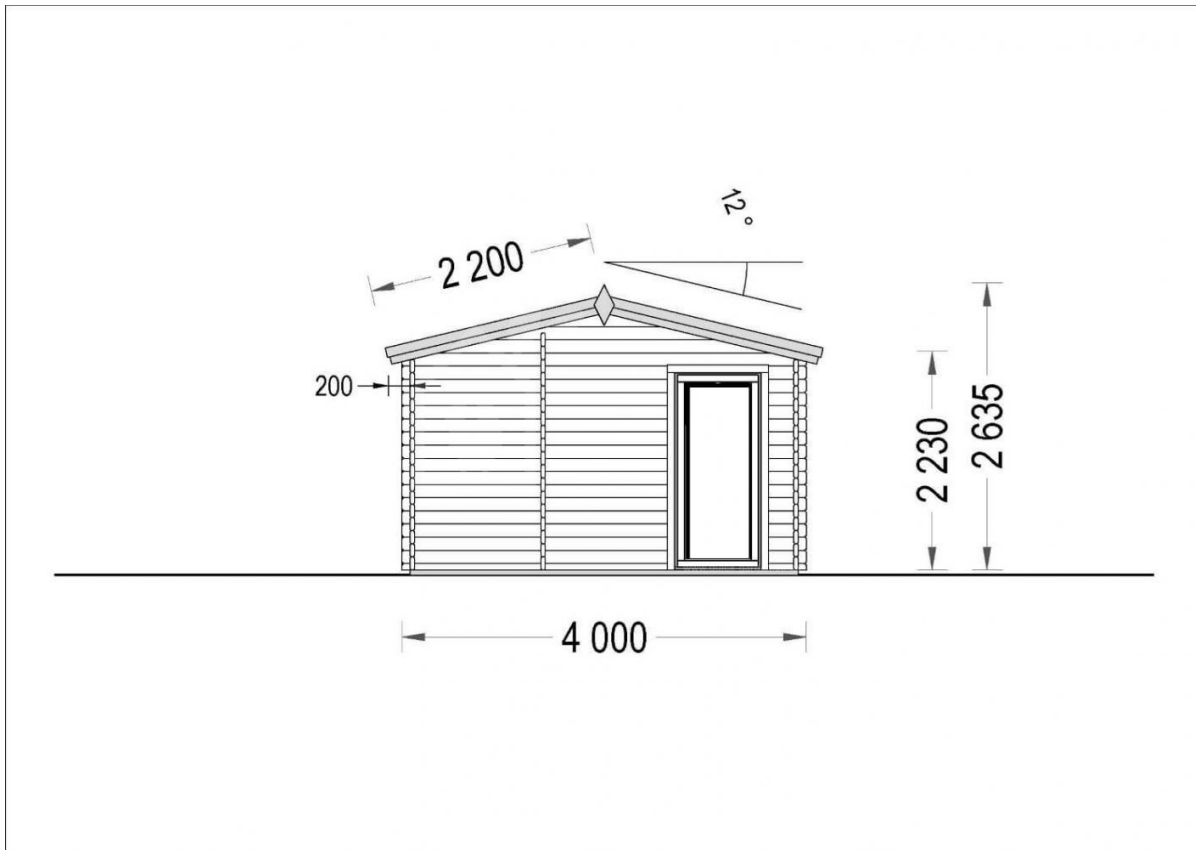
<https://www.quick-garden.co.uk/log-cabin-marion-34-mm-7-5x4m-25x13-30-m2.html>

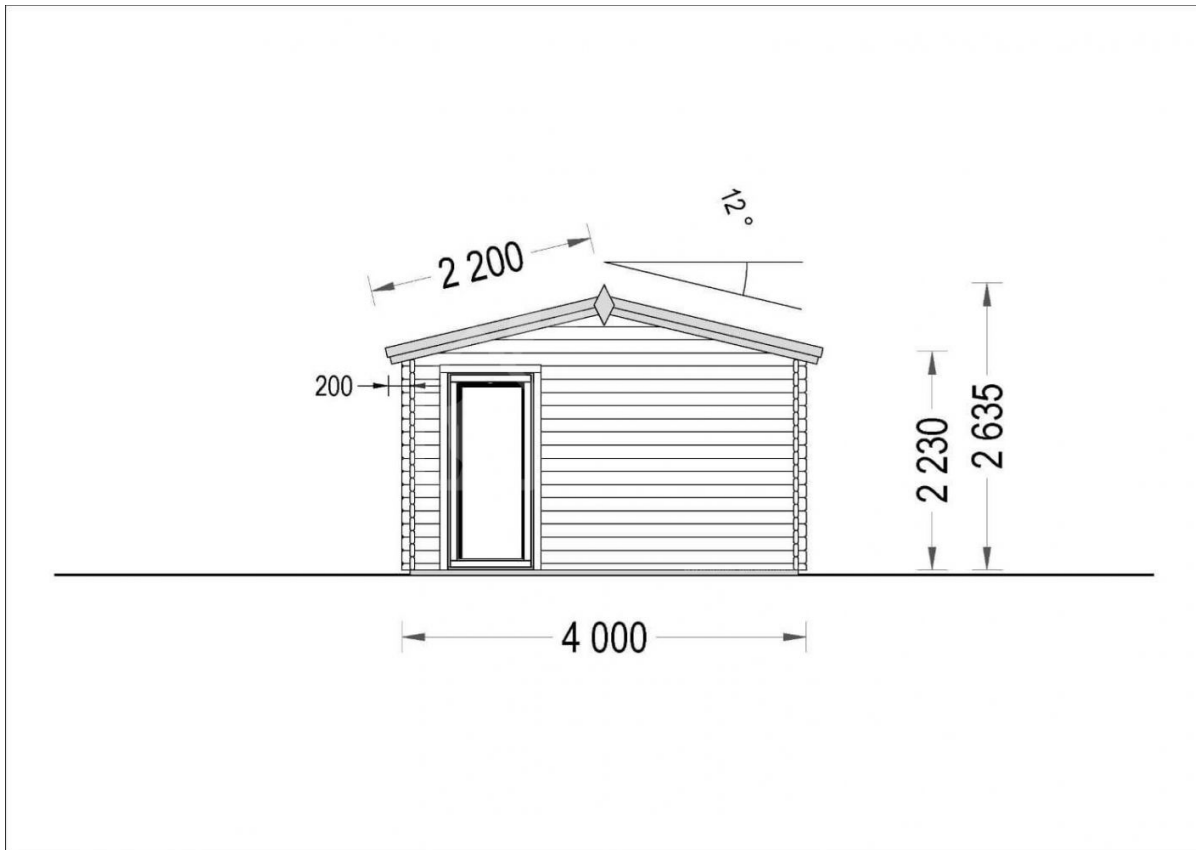


Finance available. Contact us!

Specifications & detailed sketches







Product specifications

Material	Slow grown spruce
Doors	1* 130 x 192 cm (Entrance); 1* 70 x 192 cm (Internal door)
Roof Area	35 m²
Floor area	30 m²
Windows	1* 50 x 50 cm; 4 * 85 x 192 cm (Vitrine); 2 * 130 x 192 cm (Balcony door)
Eaves height	223 cm
Ridge Height	263,5 cm
Roof	19 - 20mm thick tongue & groove boards
Roof Overhang (Front, Side, Back)	20/30 cm
Floor	19 - 20mm thick tongue & groove boards
Wall	34 mm
Wood Treatment	Optional
Roof Slope Ratio	12°
Anti Rot Warranty	10 Year
Living space	26,65 m²
Total Number of Rooms	2
Roof Covering Material	Optional
External dimensions (WxD), Metric	750 x 400 cm

Select product features according to your needs

Bitumen roofing shingles + underlay	Red shingles	+£598.00
	Black shingles	+£598.00
	Green shingles	+£598.00
Steel gutter system Ruukki	Anthracite Grey	+£1,024.00

Metal roofing	Green	+£1,888.00
	Black	+£1,888.00
	Red	+£1,888.00
TIKKURILA Ultra Classic paints	Brown	+£338.00
	Clear	+£194.00
	Yellow	+£446.00
	White	+£322.00
PVC windows & doors (White)		+£5,886.00
PVC windows & doors (Anthracite)		+£7,882.00
Clear water-based primer for interior		+£105.00
25 mm Roof & Floor insulation		+£632.00
Terrano metal roofing		+£2,557.00
Timber frame base	With metal ground screws (7.3x3.8m)	+£2,414.00
	With PVC pedestals (7.3x3.8m)	+£1,484.00
Woodshed 2.2m x 1.44m		From +£599.00
Vinyl flooring	Grey	+£1,440.00
	Oak	+£1,440.00

Customer Service

Free delivery *

Mainland England and Wales

4 - 8 working days for products in stock

4 - 8 weeks for products not in stock or custom-made products

Mainland Scotland

8 - 15 working days for products in stock

4 - 8 weeks for products not in stock or custom-made products

* An extra charge for deliveries to mainland Scotland applies only for items which are priced under £3000. In such cases you will find these charges on each product page. For all items whose price is over £3000, delivery to mainland Scotland is free of charge.

Payment

We accept card and bank payments.

To submit your order, you can either choose to pay a deposit of 20% of the total price or to pay the whole price in one go.

Planning permission

Contact us for any advice you may need regarding basic planning permission or building regulation matters. We will always be happy to help you.

10 yrs. warranty

All garden buildings with a wall thickness of at least 34mm come with a 10-year anti-rot guarantee. Structures with 28mm wall thickness come with a corresponding 5-year anti-rot guarantee.