



## **Log Cabin MARION (Insulated PLUS, 44 + 44 mm) 7.5x4m (25'x13'), 30 m²**

Product #AV1234

- Interchange the opposite walls!
- Premium windows & doors
- Tongue & Groove floorboards included
- Hardware kit included
- Window and door seals included
- Storm braces included
- Pure glass – no cheap plastic
- Reliable floor bearers
- Polite & Convenient delivery
- Made while protecting the forests
- Better resistance to rot & mould
- Moisture resistant door and windows
- Reinforced roof construction
- Secure locks & hinges
- Direct from the factory

**£25,745.00**

~~£26,373.00~~ / You save £628.00

### **The price includes:**

wooden building kit (walls, roof, floor), insulation, external PVC doors & windows (white), hardware kit, delivery, offloading, VAT.

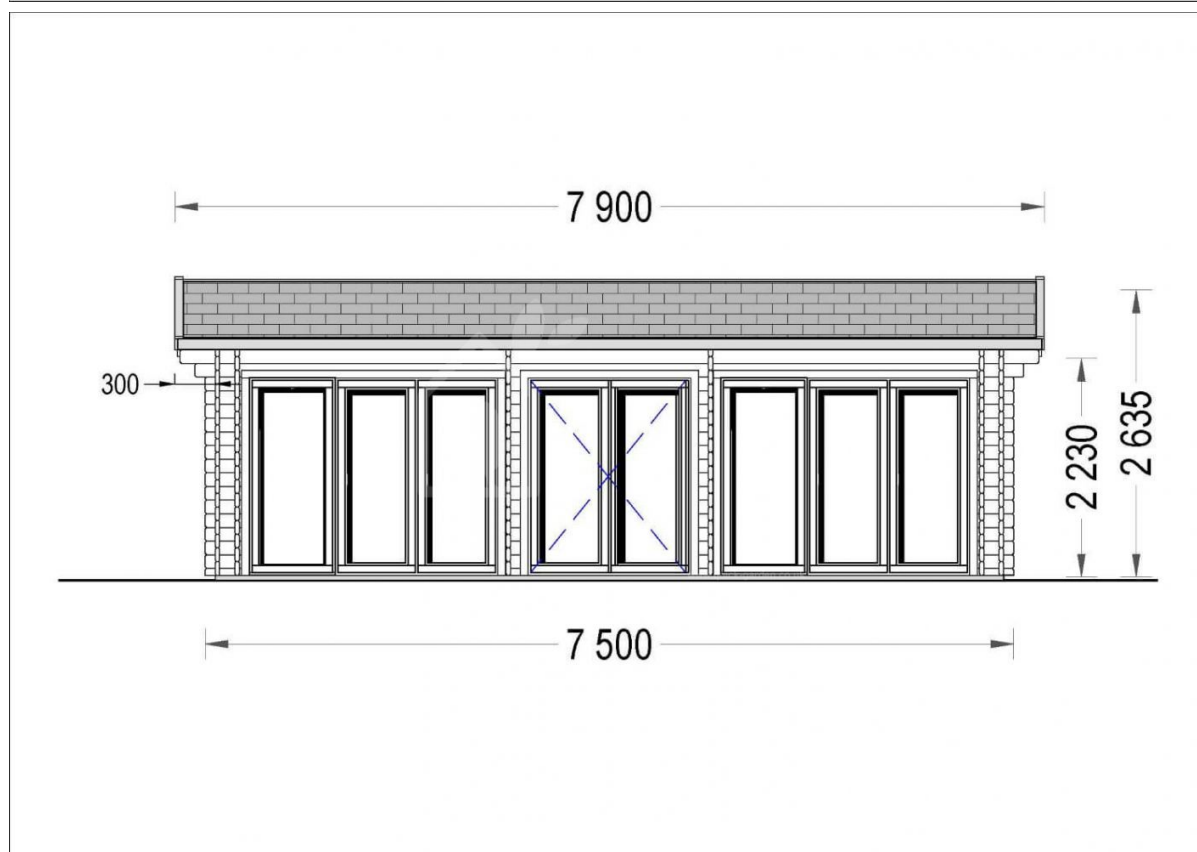
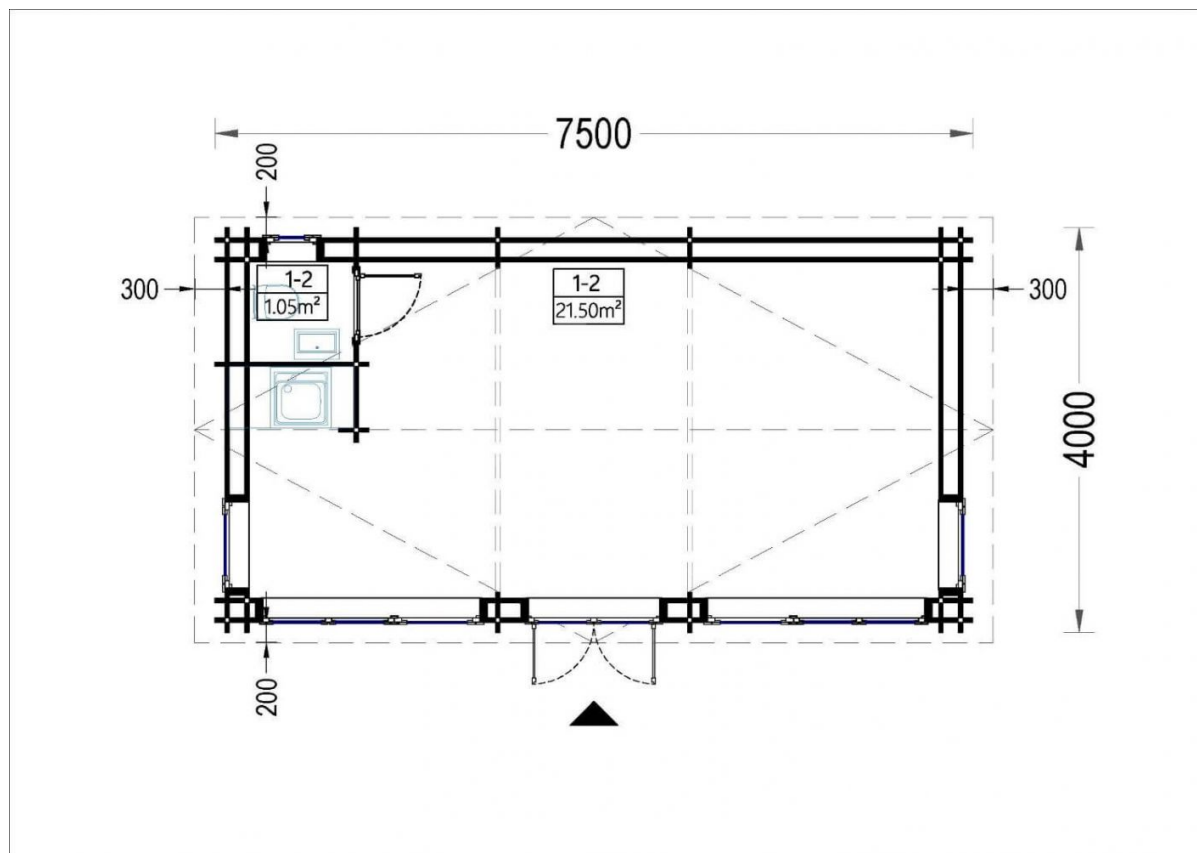
Visit our website to make sure this is the current price:

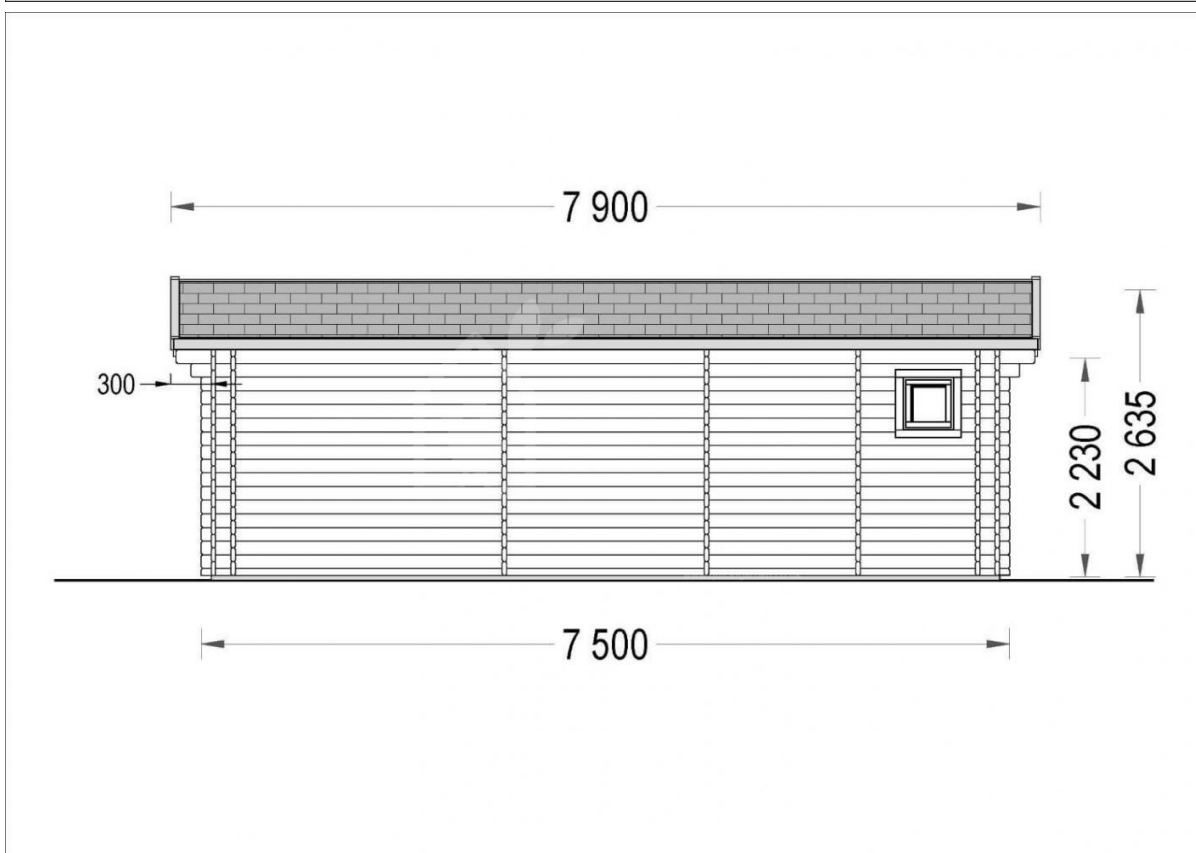
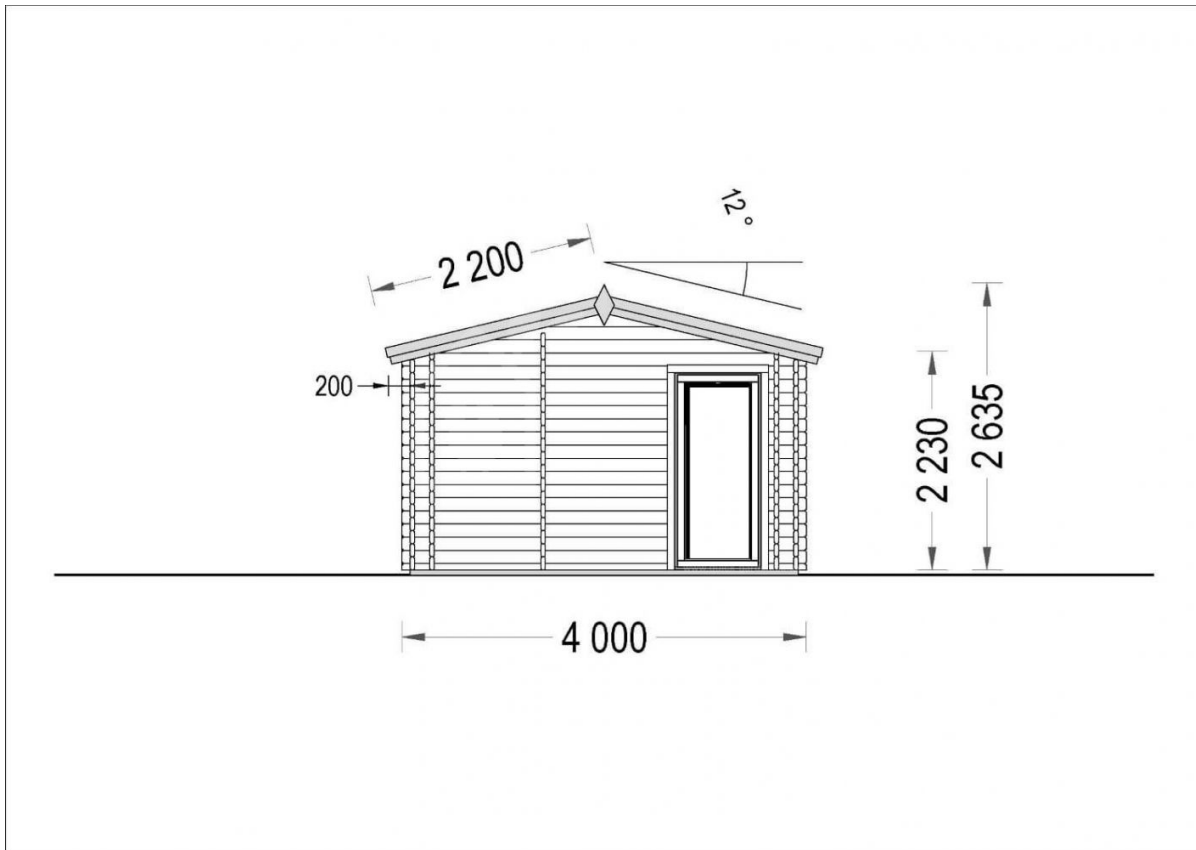
<https://www.quick-garden.co.uk/garden-studio-marion-insulated-twin-skin-44-44-mm-brf-7-5x4m-25x13-30-m2.html>

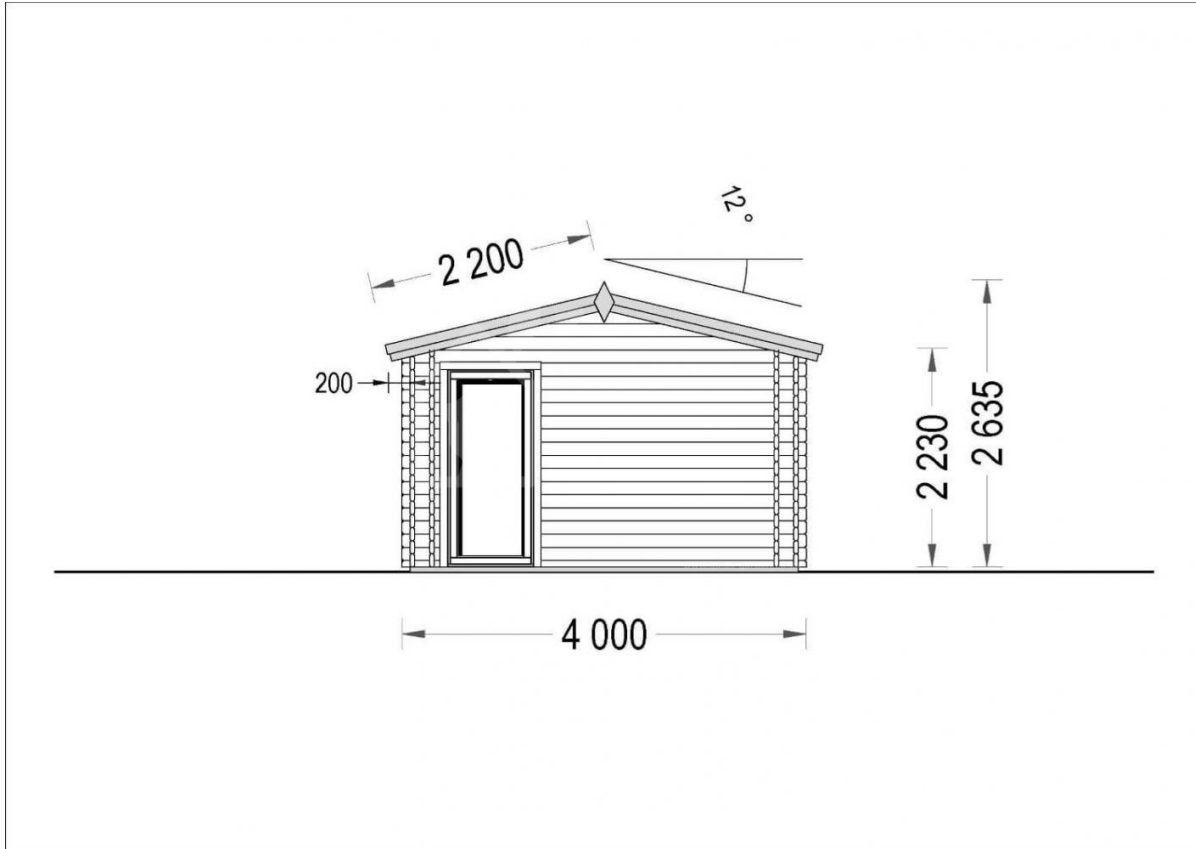


**Finance available. Contact us!**

## Specifications & detailed sketches







## Product specifications

Floor area	30 m²
Material	Slow grown spruce
Roof	18-20 mm Thick Tongue & Groove Boards + 175 mm insulation
Roof Covering Material	Optional
Roof Area	35 m²
Roof Overhang (Front, Side, Back)	20/30 cm
Roof Slope Ratio	12°
External dimensions (WxD), Metric	750 x 400 cm
Living space	26,65 m²
Wall	44+44 mm Thick Timber Logs (Twin Skin) + 120 mm Insulation
Eaves height	223 cm
Ridge Height	263,5 cm
Floor	18-20 mm Thick Tongue & Groove Boards + 200 mm insulation
Doors	1* 130 x 192 cm (Entrance); 1* 70 x 192 cm (Internal door)
Windows	1* 50 x 50 cm; 4* 85 x 192 cm (Vitrine); 2* 130 x 192 cm (Balcony door);
Total Number of Rooms	2
Anti Rot Warranty	10 Year
Wood Treatment	Optional

## Select product features according to your needs

Bitumen roofing shingles + underlay	Red shingles	+£598.00
	Green shingles	+£598.00
	Black shingles	+£598.00
PVC windows & doors	PVC windows & doors (anthracite color)	+£1,996.00
	PVC windows & doors (white color)	+£0.00

Recuperator VL-80U5-E		+£704.00
Terrano metal roofing		+£2,557.00
Insulation package		+£0.00
Timber frame base	With metal ground screws (7.3x3.8m)	+£2,414.00
	With PVC pedestals (7.3x3.8m)	+£1,484.00
Woodshed 2.2m x 1.44m		From +£599.00
Vinyl flooring	Oak	+£1,440.00
	Grey	+£1,440.00
Steel gutter system Ruukki	Anthracite Grey	+£1,024.00
Clear water-based primer for interior		+£105.00
Metal roofing	Green	+£1,888.00
	Black	+£1,888.00
	Red	+£1,888.00
TIKKURILA Ultra Classic paints	Yellow	+£446.00
	Brown	+£338.00
	White	+£322.00
	Clear	+£194.00

## Customer Service

### Free delivery \*

Mainland England and Wales

4 - 8 working days for products in stock

4 - 8 weeks for products not in stock or custom-made products

Mainland Scotland

8 - 15 working days for products in stock

4 - 8 weeks for products not in stock or custom-made products

\* An extra charge for deliveries to mainland Scotland applies only for items which are priced under £3000. In such cases you will find these charges on each product page. For all items whose price is over £3000, delivery to mainland Scotland is free of charge.

---

### Payment

We accept card and bank payments.

To submit your order, you can either choose to pay a deposit of 20% of the total price or to pay the whole price in one go.

---

### Planning permission

Contact us for any advice you may need regarding basic planning permission or building regulation matters. We will always be happy to help you.

---

### 10 yrs. warranty

All garden buildings with a wall thickness of at least 34mm come with a 10-year anti-rot guarantee. Structures with 28mm wall thickness come with a corresponding 5-year anti-rot guarantee.