



Log Cabin OLIVIA (44+44 mm + Insulation), 6x6 m (20'x20'), 27 m² With 8 m² Terrace

Product #AV1053

- Interchange the opposite walls!
- Premium windows & doors
- Tongue & Groove floorboards included
- Hardware kit included
- Window and door seals included
- Storm braces included
- Pure glass – no cheap plastic
- Reliable floor bearers
- Polite & Convenient delivery
- Made while protecting the forests
- Better resistance to rot & mould
- Moisture resistant door and windows
- Reinforced roof construction
- Secure locks & hinges
- Direct from the factory

£14,966.00

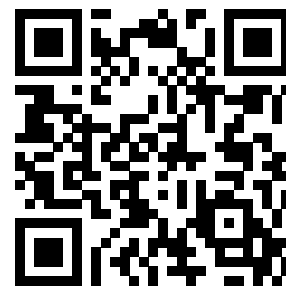
~~£17,061.00~~ / You save £2,095.00

The price includes:

wooden building kit (walls, roof, floor), insulation, double glazed wooden doors & windows, hardware kit, delivery, offloading, VAT.

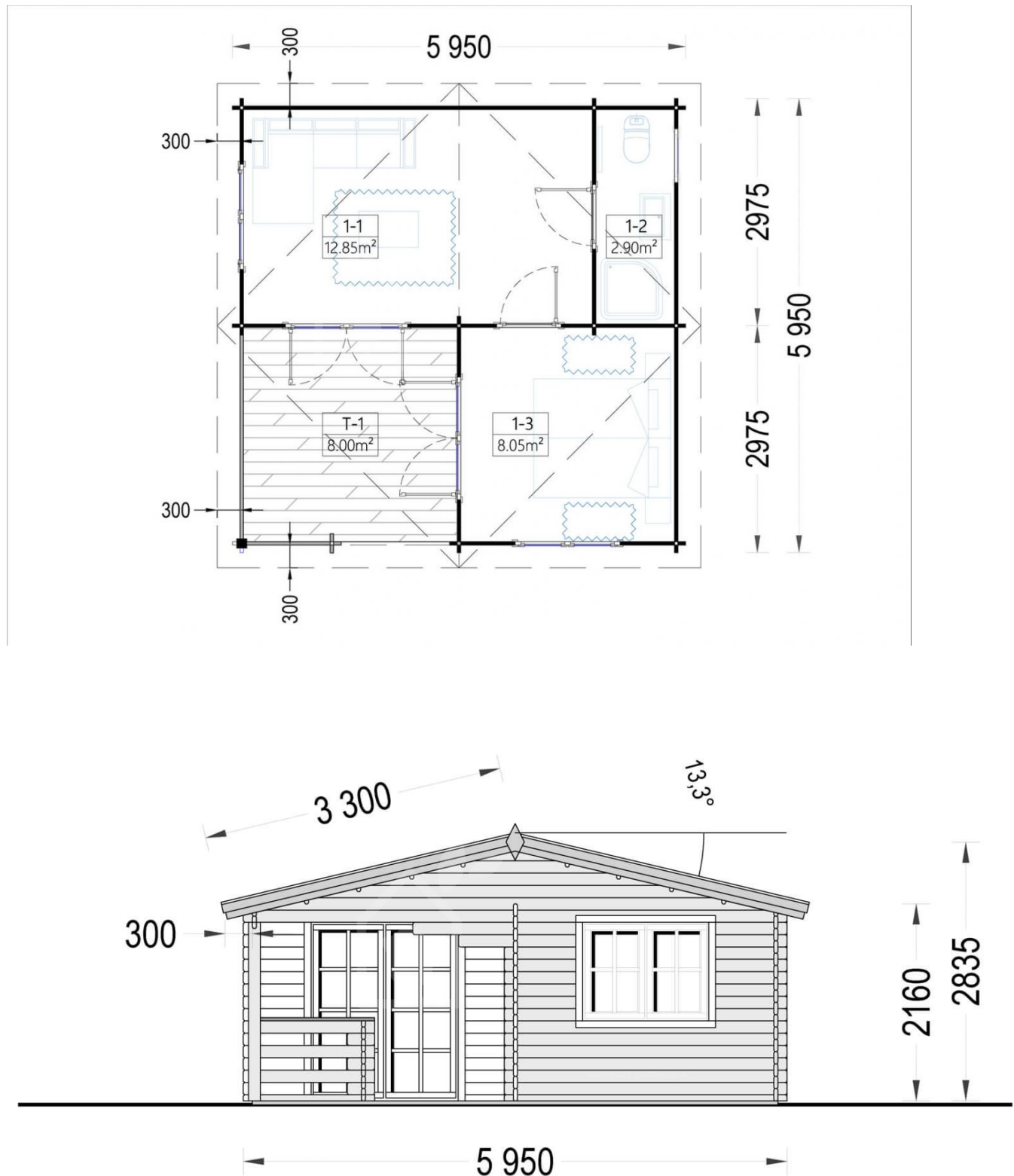
Visit our website to make sure this is the current price:

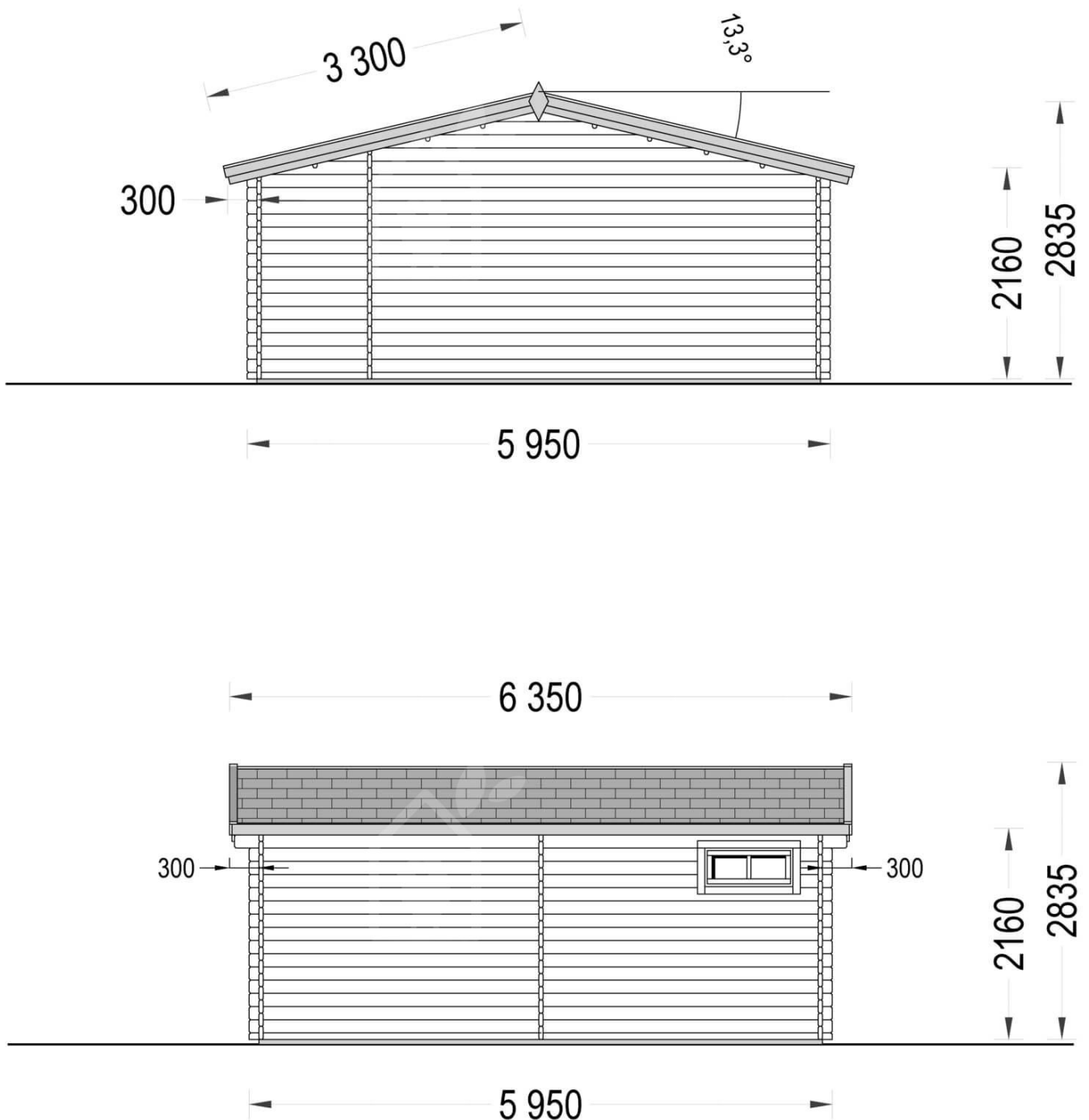
<https://www.quick-garden.co.uk/AV1053>

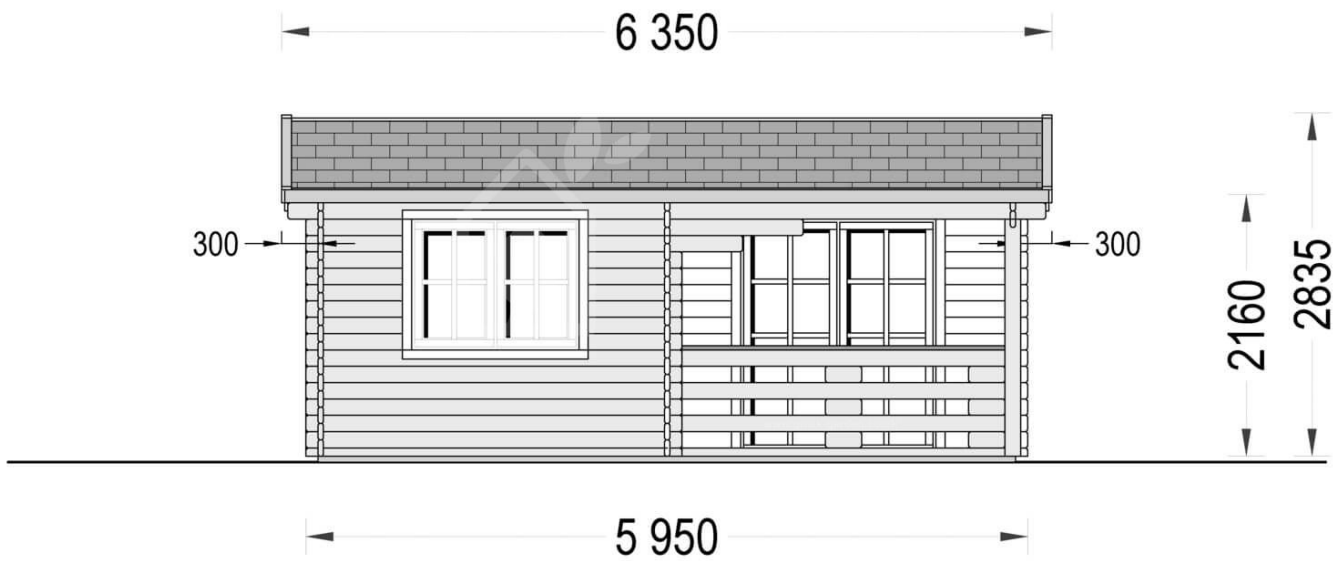


Finance available. Contact us!

Specifications & detailed sketches







Product specifications

| | |
|-----------------------------------|--|
| Wall | 44 mm + 25 mm insulation + 44 mm |
| Material | Slow grown spruce |
| Doors | 85cm x 192cm (2 units) and 161cm x 192cm (2 units) |
| Floor area | 36 m ² |
| Windows | 138cm x 105cm (2 units) and 90cm x 39cm (1 unit) |
| Eaves height | 216 cm |
| Ridge Height | 283,5 cm |
| Roof | 20 mm tongue & groove boards + 25 mm insulation |
| Roof Overhang (Front, Side, Back) | 30cm |
| Floor | 20 mm tongue & groove boards + 25 mm insulation |
| Anti Rot Warranty | 10 Year |
| Total Number of Rooms | 2 |
| Roof Covering Material | Optional |
| External dimensions (WxD), Metric | 595 x 595 cm |
| Wood Treatment | Optional |

Select product features according to your needs

| | |
|-----------------------------|--|
| Insulation package | +£0.00 |
| Terrano metal roofing | +£2,831.00 |
| Timber frame base | With PVC pedestals +£1,536.00 With metal ground screws +£2,856.00 |
| Recuperator VL-100U5-E | +£704.00 |
| Storage shed 2.7m x 1.6m | From +£1,176.00 |
| Woodshed 2.2m x 1.44m | From +£925.00 |
| PVC windows & doors (White) | +£4,884.00 |

| | | |
|---|-----------------|------------|
| PVC windows & doors (Anthracite) | | +£6,384.00 |
| Bitumen roofing shingles + underlay | Red shingles | +£730.00 |
| | Green shingles | +£730.00 |
| | Black shingles | +£730.00 |
| Clear water-based primer for interior RP Wood® (supplied in tins) | | +£175.00 |
| Metal roofing | Green | +£2,348.00 |
| | Black | +£2,348.00 |
| | Red | +£2,348.00 |
| Steel gutter system Ruukki | Anthracite Grey | +£744.00 |
| TIKKURILA Ultra Classic paints | Yellow | +£446.00 |
| | Brown | +£338.00 |
| | White | +£322.00 |
| | Clear | +£194.00 |

Customer Service

Free delivery *

Mainland England and Wales

4 - 8 working days for products in stock

4 - 8 weeks for products not in stock or custom-made products

Mainland Scotland

8 - 15 working days for products in stock

4 - 8 weeks for products not in stock or custom-made products

* An extra charge for deliveries to mainland Scotland applies only for items which are priced under £3000. In such cases you will find these charges on each product page. For all items whose price is over £3000, delivery to mainland Scotland is free of charge.

Payment

We accept card and bank payments.

To submit your order, you can either choose to pay a deposit of 20% of the total price or to pay the whole price in one go.

Planning permission

Contact us for any advice you may need regarding basic planning permission or building regulation matters. We will always be happy to help you.

10 yrs. warranty

All garden buildings with a wall thickness of at least 34mm come with a 10-year anti-rot guarantee. Structures with 28mm wall thickness come with a corresponding 5-year anti-rot guarantee.