



**Log Cabin ROYAL (44+44 mm + Insulation),  
5x5 m (16'x17'), 25 m<sup>2</sup>**

Product #AV1035

- Interchange the opposite walls!
- Premium windows & doors
- Tongue & Groove floorboards included
- Hardware kit included
- Window and door seals included
- Storm braces included
- Pure glass – no cheap plastic
- Reliable floor bearers
- Polite & Convenient delivery
- Made while protecting the forests
- Better resistance to rot & mould
- Moisture resistant door and windows
- Reinforced roof construction
- Secure locks & hinges
- Direct from the factory

**£11,315.00**

~~£11,536.00~~ / You save £221.00

**The price includes:**

wooden building kit (walls, roof, floor),  
insulation, double glazed wooden  
doors & windows, hardware kit,  
delivery, offloading, VAT.

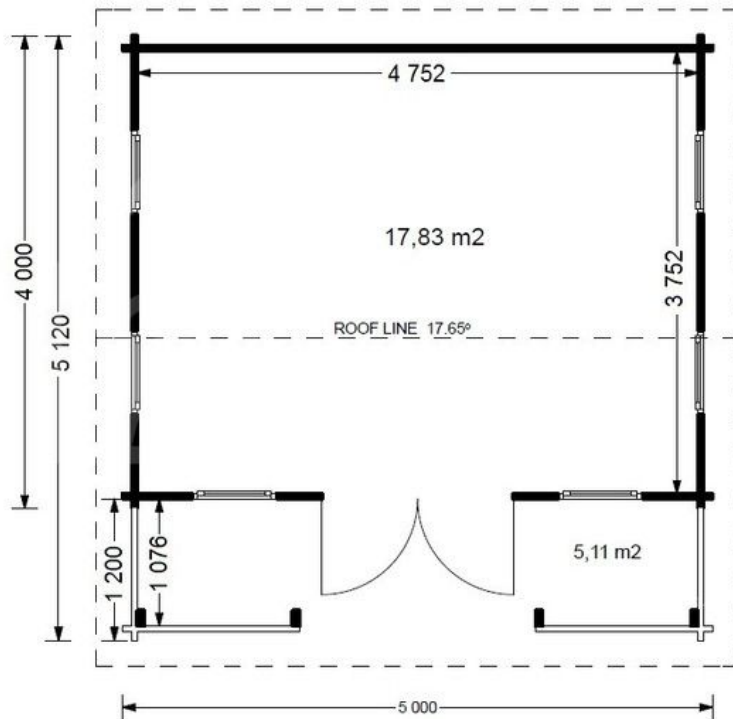
Visit our website to make sure this is  
the current price:

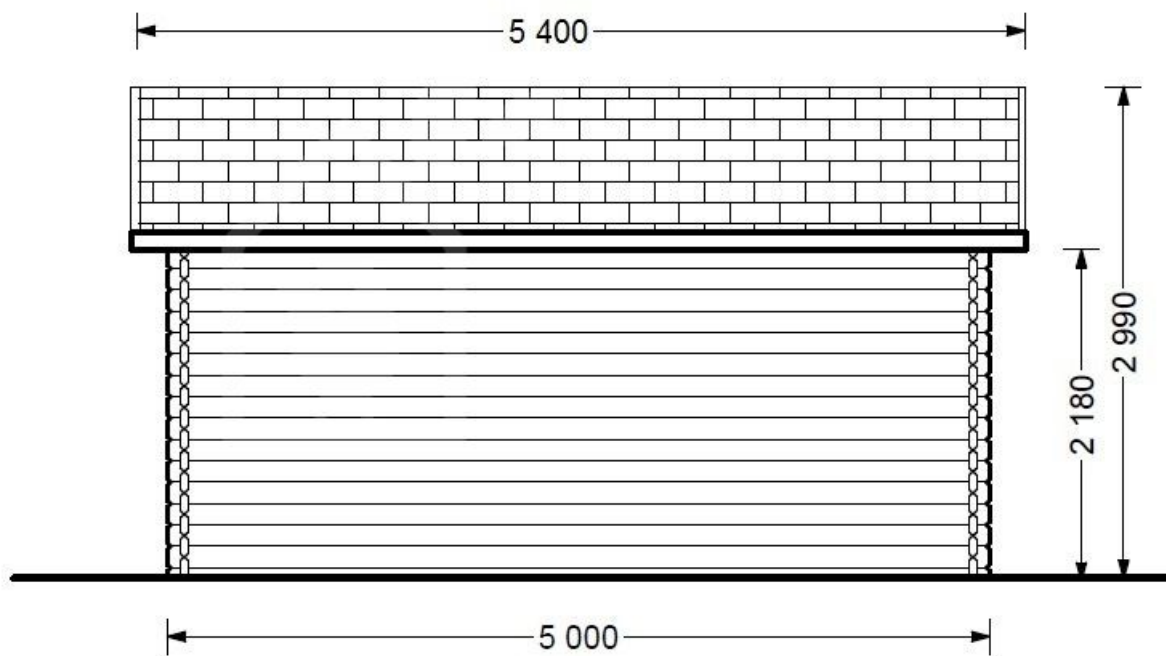
<https://www.quick-garden.co.uk/insulated-log-cabin-royal-5m-x-5m-16x17-ft-twin-skin.html>

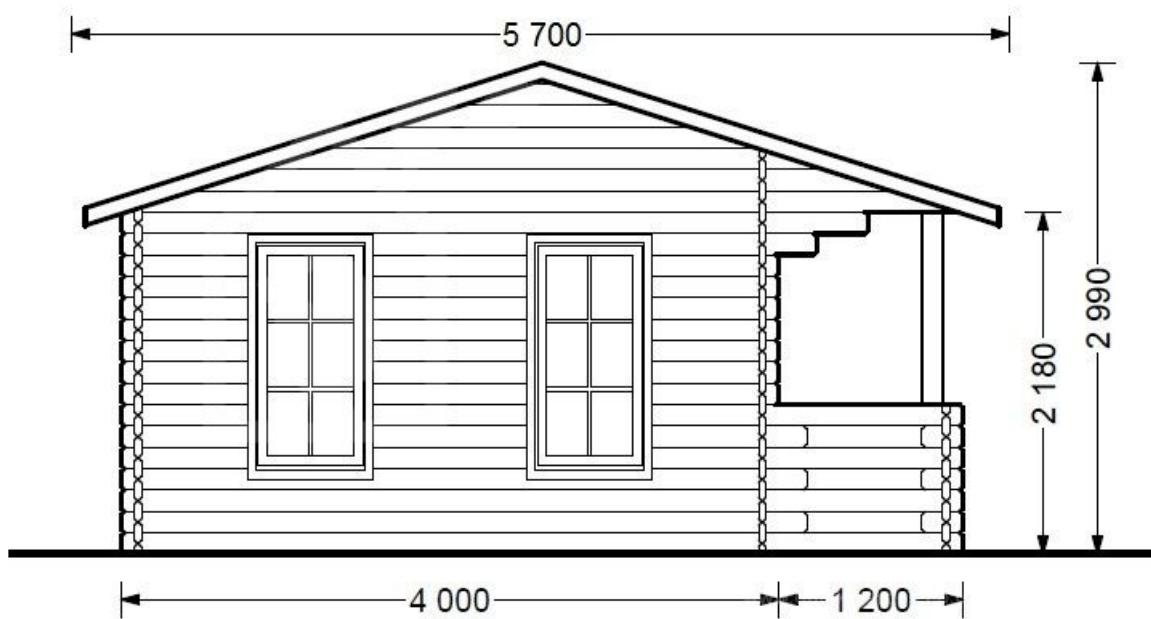


**Finance available. Contact us!**

## Specifications & detailed sketches







## Product specifications

Wall	44 mm + 25 mm insulation + 44 mm
Material	Slow grown spruce
Doors	161cm x 192cm (1 unit)
Floor area	25 m <sup>2</sup>
Windows	85cm x 144m (6 units)
Eaves height	218 cm
Ridge Height	299 cm
Roof	20 mm tongue & groove boards + 25 mm insulation
Roof Overhang (Front, Side, Back)	30cm (11")
Floor	20 mm tongue & groove boards + 25 mm insulation
Anti Rot Warranty	10 Year
Total Number of Rooms	1
Minimum Base Required	484cm x 504cm (15'10" x 16'6")
Roof Covering Material	Optional
External dimensions (WxD), Metric	500 x 520 cm
Wood Treatment	Optional

## Select product features according to your needs

Vinyl flooring	Grey	+£1,000.00
	Oak	+£1,000.00
Timber frame base	With metal ground screws (4.8x5.0m)	+£2,024.00
	With PVC pedestals (4.8x5.0m)	+£1,274.00
Insulation package		+£0.00
Terrano metal roofing		+£2,234.00
Internal WC Room Kit		+£459.00
Recuperator VL-80U5-E		+£704.00

Storage shed 2.7m x 1.6m		From +£1,176.00
Woodshed 2.2m x 1.44m		From +£599.00
Wooden canopy 3m x 1.5m		From +£452.00
PVC windows & doors (Anthracite)		+£5,304.00
Bitumen roofing shingles + underlay	Red shingles	+£528.00
	Green shingles	+£528.00
	Black shingles	+£528.00
Clear water-based primer for interior		+£140.00
PVC windows & doors (White)		+£4,061.00
Metal roofing	Green	+£1,774.00
	Black	+£1,774.00
	Red	+£1,774.00
OptiLight Roof window 55cm x 78cm		+£299.00
Steel gutter system Ruukki	Anthracite Grey	+£658.00
TIKKURILA Ultra Classic paints	Yellow	+£446.00
	Brown	+£338.00
	White	+£322.00
	Clear	+£194.00

## Customer Service

### Free delivery \*

Mainland England and Wales

4 - 8 working days for products in stock

4 - 8 weeks for products not in stock or custom-made products

Mainland Scotland

8 - 15 working days for products in stock

4 - 8 weeks for products not in stock or custom-made products

\* An extra charge for deliveries to mainland Scotland applies only for items which are priced under £3000. In such cases you will find these charges on each product page. For all items whose price is over £3000, delivery to mainland Scotland is free of charge.

---

### Payment

We accept card and bank payments.

To submit your order, you can either choose to pay a deposit of 20% of the total price or to pay the whole price in one go.

---

### Planning permission

Contact us for any advice you may need regarding basic planning permission or building regulation matters. We will always be happy to help you.

---

### 10 yrs. warranty

All garden buildings with a wall thickness of at least 34mm come with a 10-year anti-rot guarantee. Structures with 28mm wall thickness come with a corresponding 5-year anti-rot guarantee.