



**Log Cabin With Loft SCOOT (44 mm),  
4.5x6 m (15'x20'), 27 m<sup>2</sup> + 9 m<sup>2</sup>**

Product #AV025

- Interchange the opposite walls!
- Premium windows & doors
- Tongue & Groove floorboards included
- Hardware kit included
- Window and door seals included
- Storm braces included
- Pure glass – no cheap plastic
- Reliable floor bearers
- Polite & Convenient delivery
- Made while protecting the forests
- Better resistance to rot & mould
- Moisture resistant door and windows
- Reinforced roof construction
- Secure locks & hinges
- Direct from the factory

**£9,461.00**

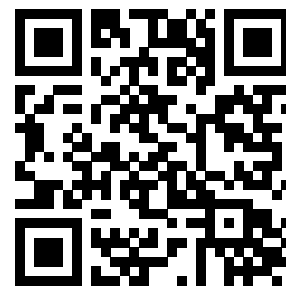
~~£10,229.00~~ / You save £768.00

**The price includes:**

wooden building kit (walls, roof, floor), wooden staircase, double glazed wooden doors & windows, hardware kit, delivery, offloading, VAT.

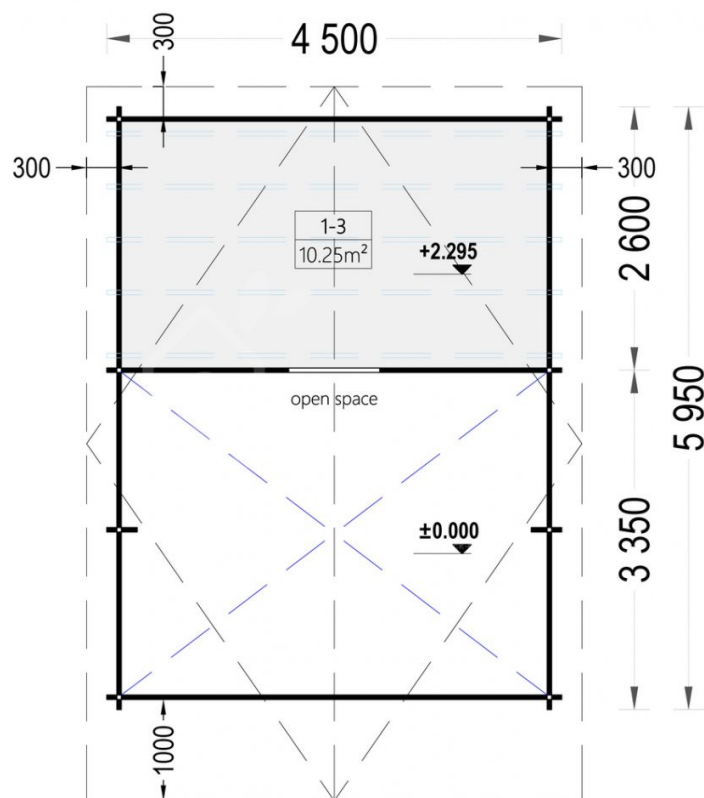
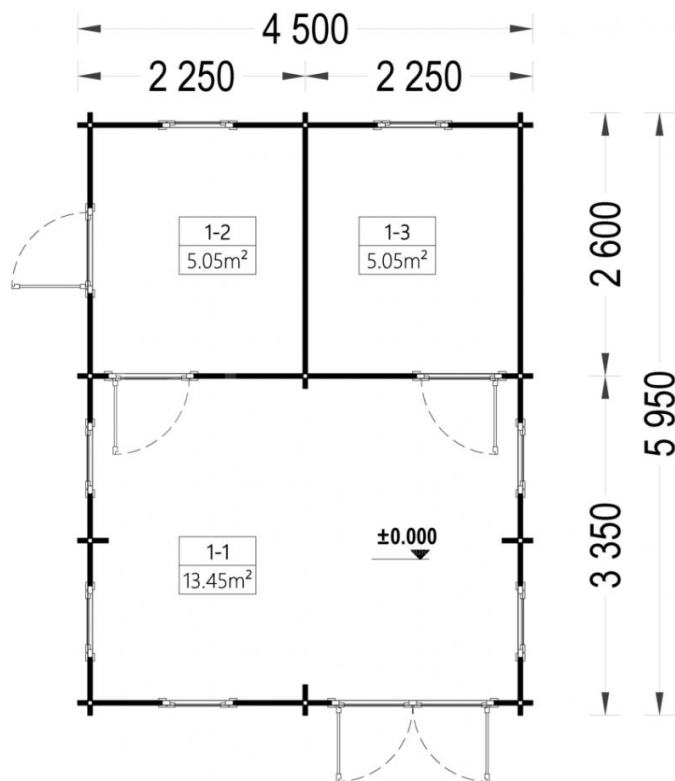
Visit our website to make sure this is the current price:

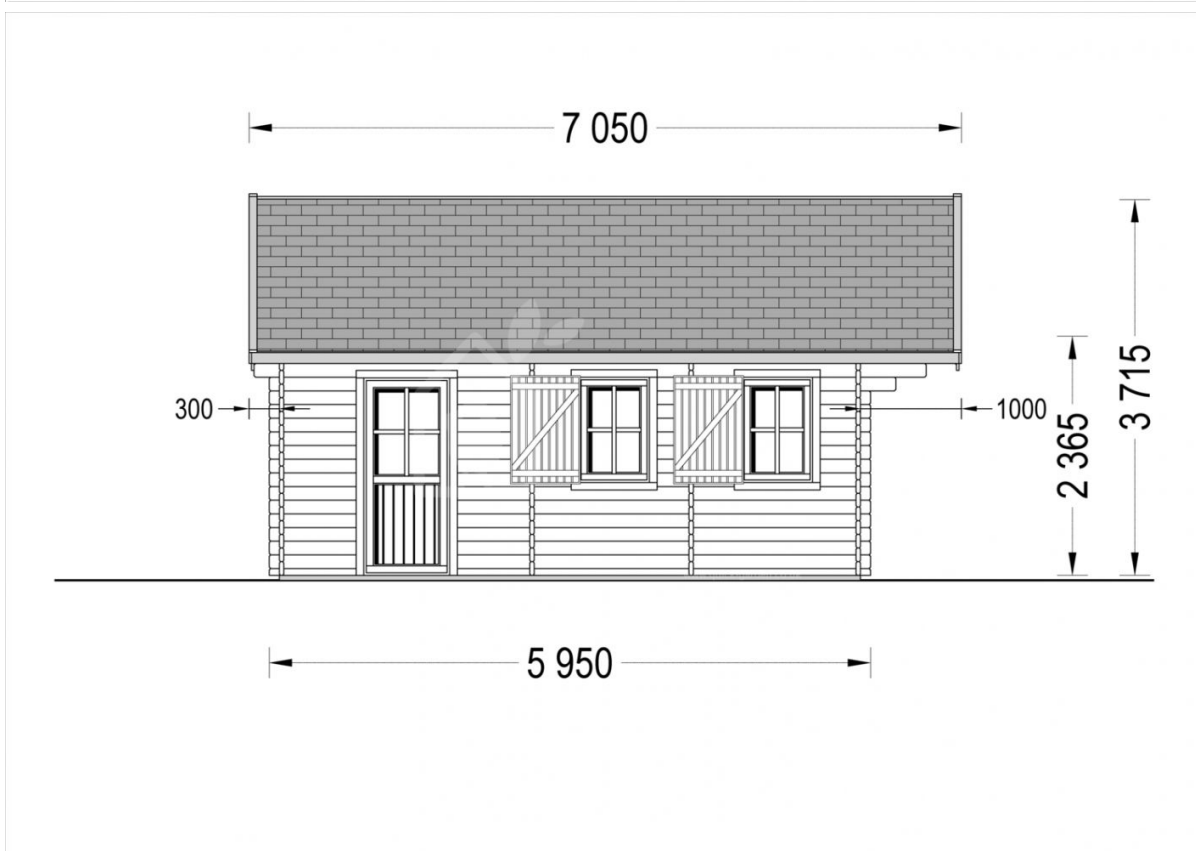
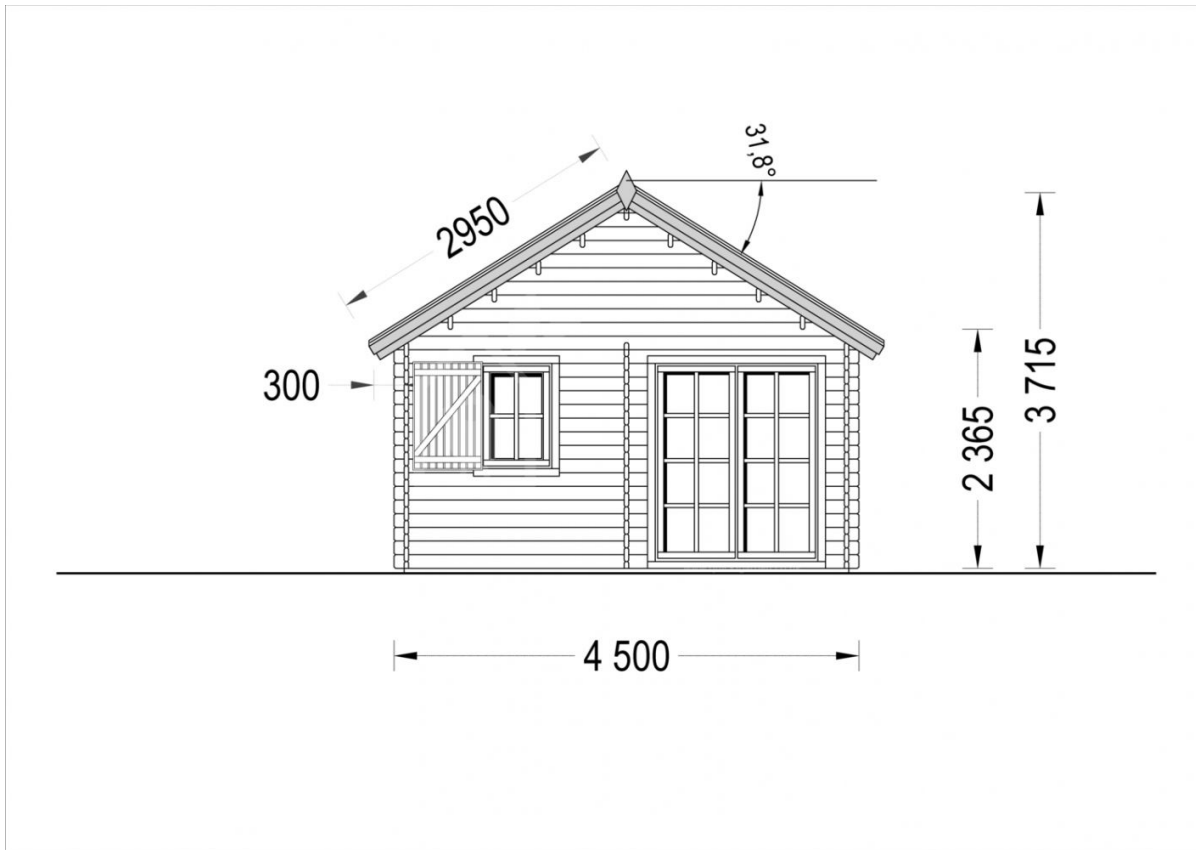
<https://www.quick-garden.co.uk/AV025>

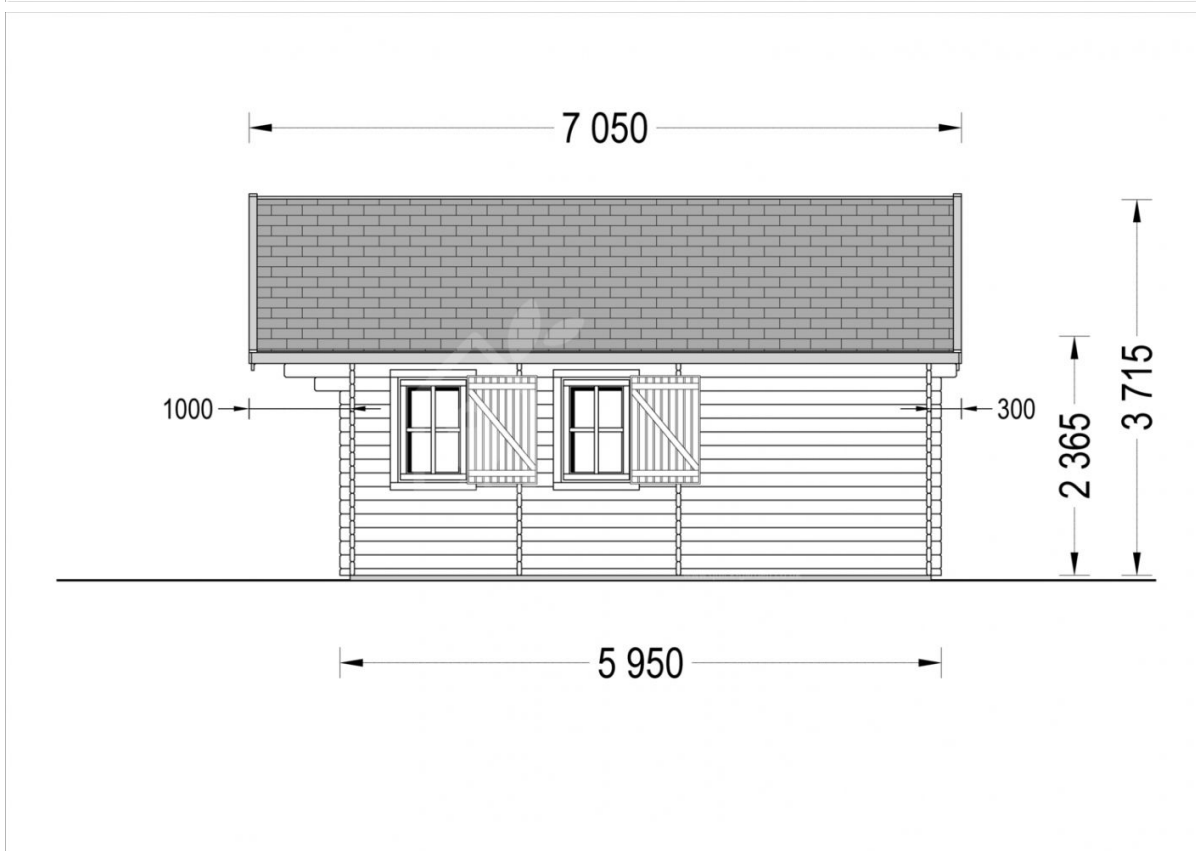
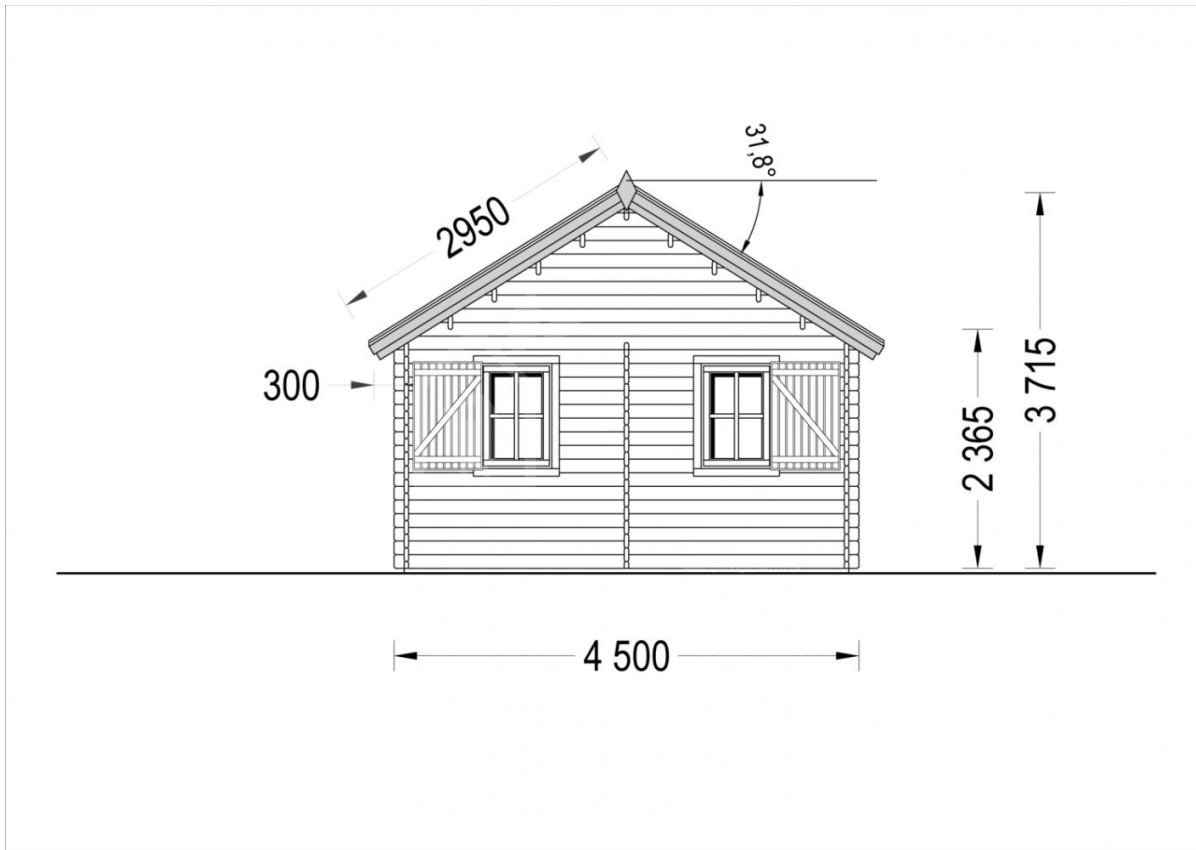


**Finance available. Contact us!**

## Specifications & detailed sketches







## Product specifications

Wall	44 mm
Material	Slow grown spruce
Doors	85cm x 192cm (3 units) and 161cm x 192cm (1 unit)
Roof Area	42 m <sup>2</sup>
Floor area	27 m <sup>2</sup>
Windows	70cm x 105cm (7 units)
Eaves height	236,5 cm
Ridge Height	371,5 cm
Roof	19 - 20mm thick tongue & groove boards
Roof Overhang (Front, Side, Back)	122cm (4')
Floor	19 - 20mm thick tongue & groove boards
Anti Rot Warranty	10 Year
Total Number of Rooms	4
Minimum Base Required	434cm x 584cm
Roof Covering Material	Optional
External dimensions (WxD), Metric	450 x 595 cm
Living space	23,95 m <sup>2</sup>
Internal dimensions (WxD)	425 x 570 cm
Wood Treatment	Optional

## Select product features according to your needs

Timber frame base	With PVC pedestals	+£1,209.00
	With metal ground screws	+£2,174.00
Terrano metal roofing		+£2,831.00
PVC windows & doors (Anthracite)		+£6,228.00

Storage shed 2.7m x 1.6m		From +£1,176.00
Bitumen roofing shingles + underlay	Red shingles	+£730.00
	Green shingles	+£730.00
	Black shingles	+£730.00
25 mm Roof & Floor insulation		+£632.00
Clear water-based primer for interior RP Wood® (supplied in tins)		+£210.00
PVC windows & doors (White)		+£4,881.00
Metal roofing	Green	+£2,321.00
	Black	+£2,321.00
	Red	+£2,321.00
OptiLight Roof window 55cm x 78cm		+£299.00
Steel gutter system Ruukki	Anthracite Grey	+£938.00
TIKKURILA Ultra Classic paints	Yellow	+£446.00
	Brown	+£338.00
	White	+£322.00
	Clear	+£291.00

## Customer Service

### Free delivery \*

Mainland England and Wales

4 - 8 working days for products in stock

4 - 8 weeks for products not in stock or custom-made products

Mainland Scotland

8 - 15 working days for products in stock

4 - 8 weeks for products not in stock or custom-made products

\* An extra charge for deliveries to mainland Scotland applies only for items which are priced under £3000. In such cases you will find these charges on each product page. For all items whose price is over £3000, delivery to mainland Scotland is free of charge.

---

### Payment

We accept card and bank payments.

To submit your order, you can either choose to pay a deposit of 20% of the total price or to pay the whole price in one go.

---

### Planning permission

Contact us for any advice you may need regarding basic planning permission or building regulation matters. We will always be happy to help you.

---

### 10 yrs. warranty

All garden buildings with a wall thickness of at least 34mm come with a 10-year anti-rot guarantee. Structures with 28mm wall thickness come with a corresponding 5-year anti-rot guarantee.