



**Log Cabin With Loft SCOOT (Insulated PLUS, 44 + 44 mm), 4.5x6 m (15'x20'), 27 m<sup>2</sup> + 9 m<sup>2</sup>**

Product #AV025-3

- Interchange the opposite walls!
- Premium windows & doors
- Tongue & Groove floorboards included
- Hardware kit included
- Window and door seals included
- Storm braces included
- Pure glass – no cheap plastic
- Reliable floor bearers
- Polite & Convenient delivery
- Made while protecting the forests
- Better resistance to rot & mould
- Moisture resistant door and windows
- Reinforced roof construction
- Secure locks & hinges
- Direct from the factory

**£28,364.00**

£29,056.00 / You save £692.00

**The price includes:**

wooden building kit (walls, roof, floor), wooden staircase, insulation, external PVC doors & windows (white), hardware kit, delivery, offloading, VAT.

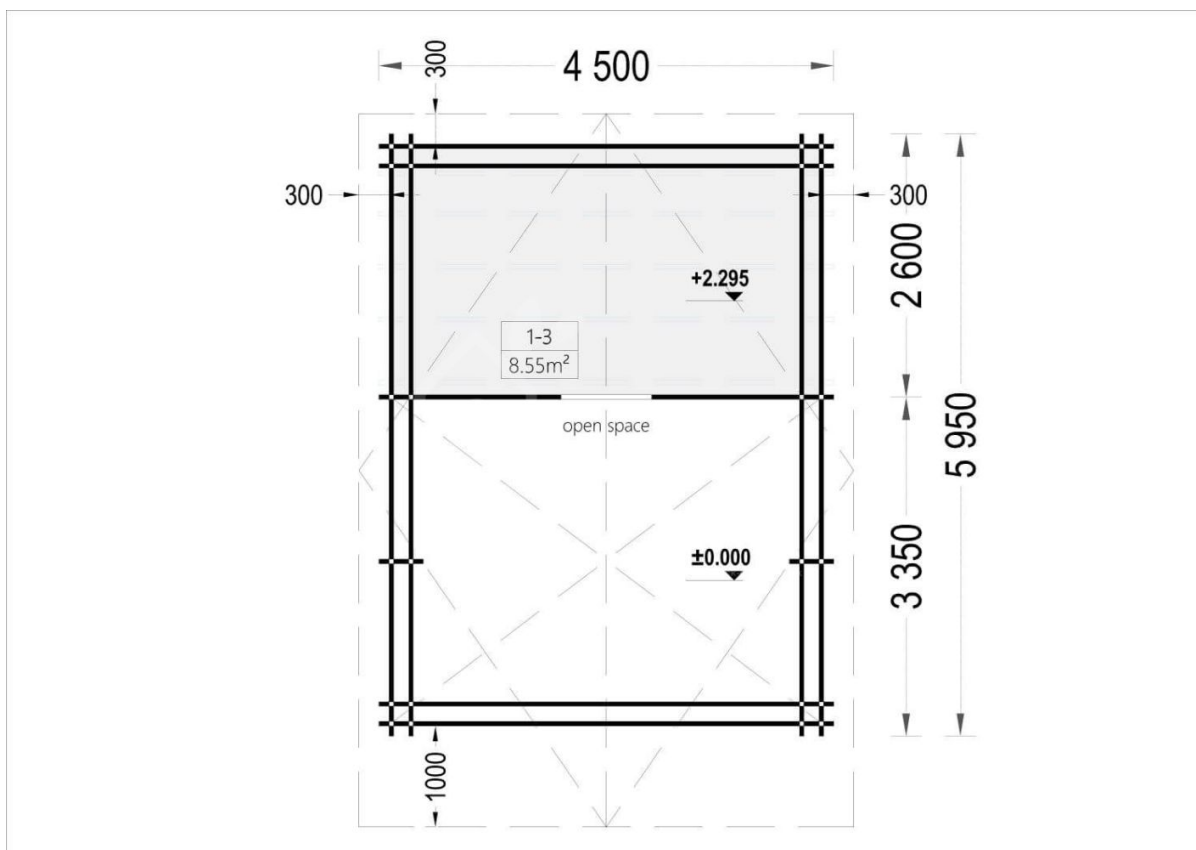
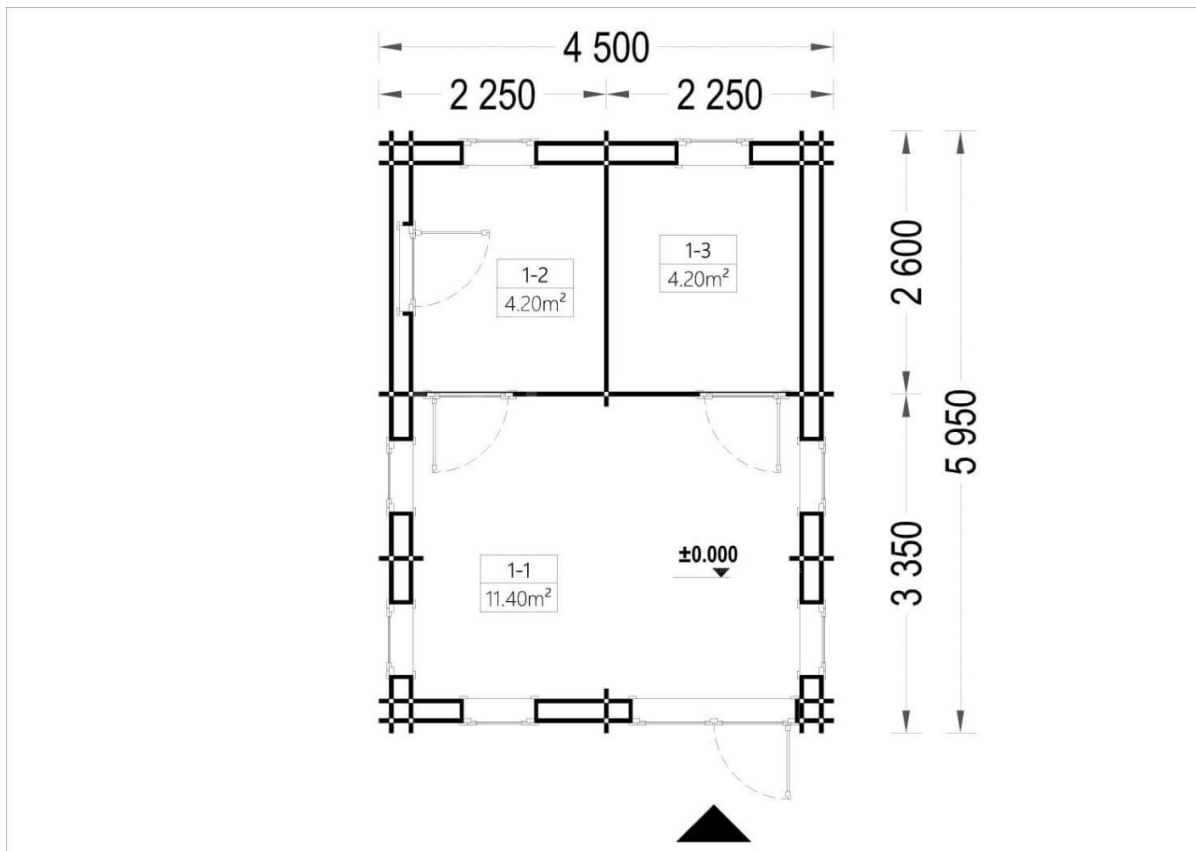
Visit our website to make sure this is the current price:

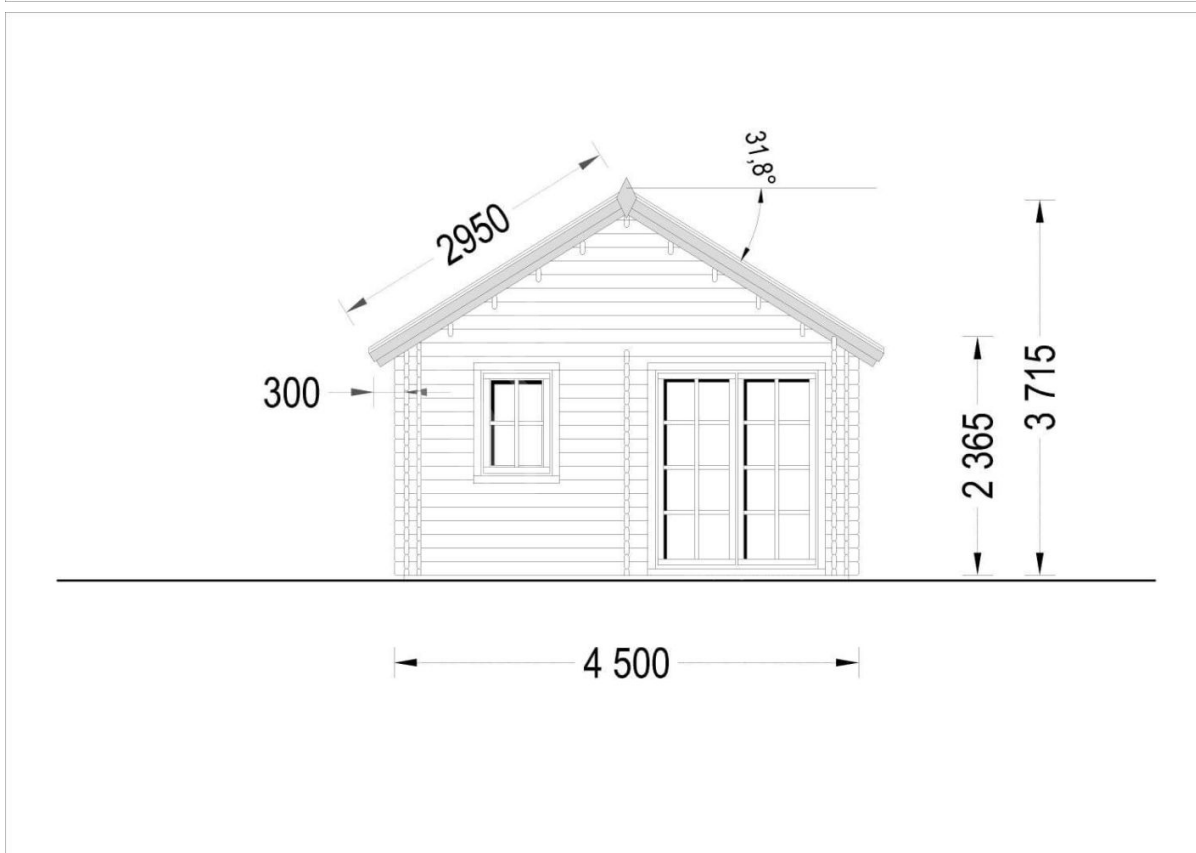
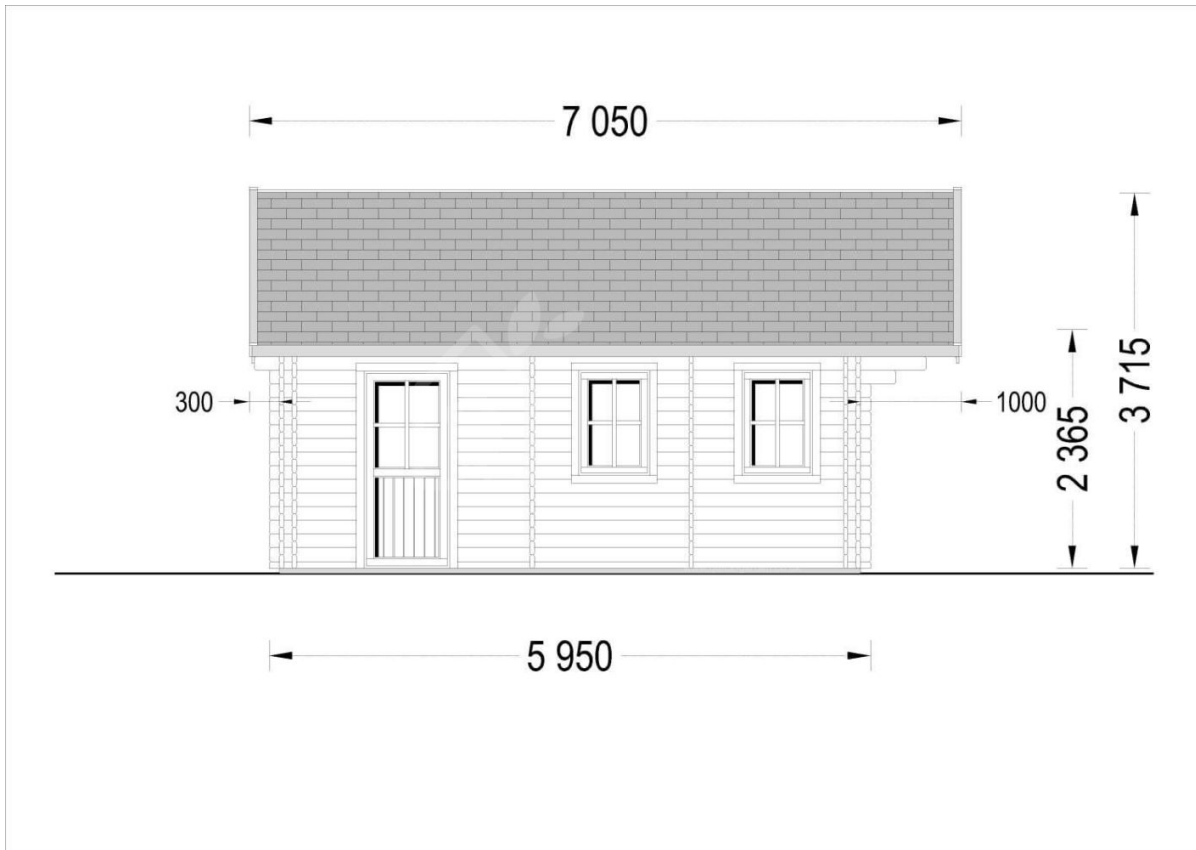
<https://www.quick-garden.co.uk/insulated-residential-log-cabin-scoot-4-5m-x-6m-15x20-ft-building-reg-friendly.html>

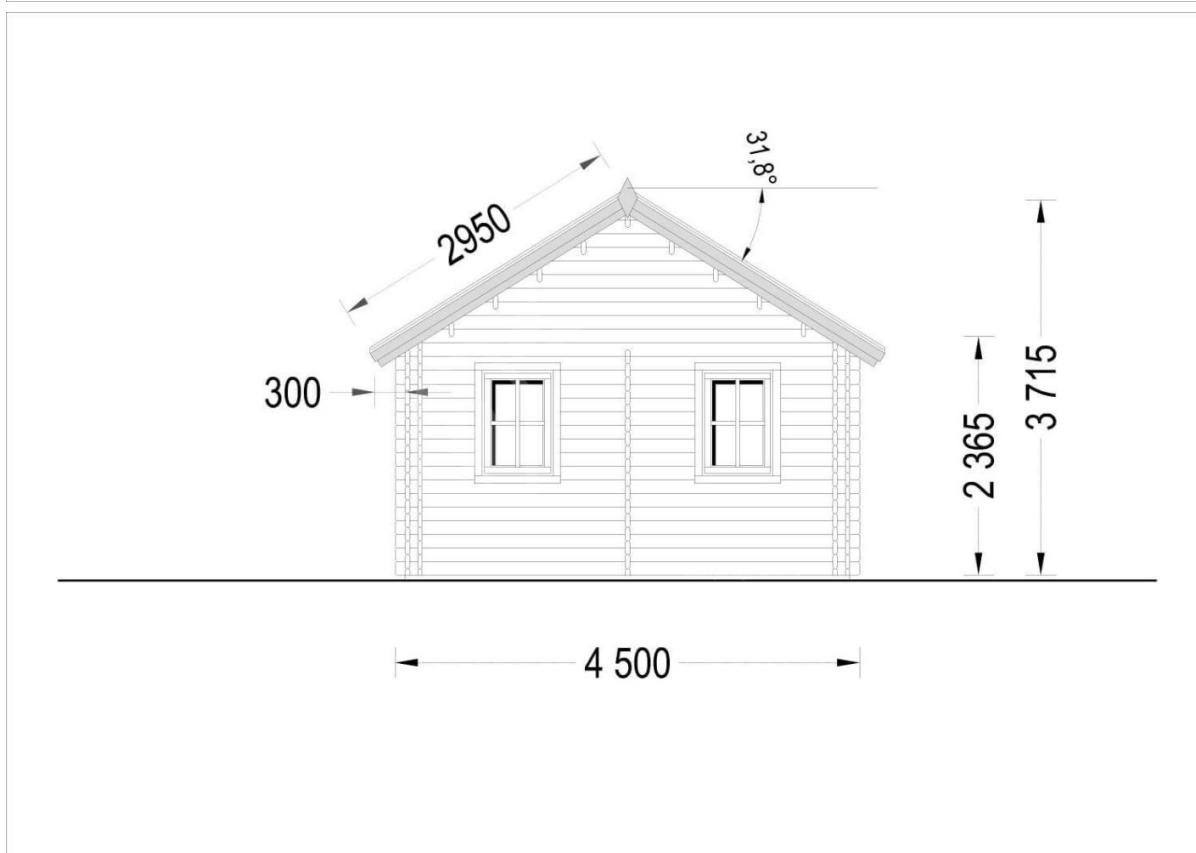
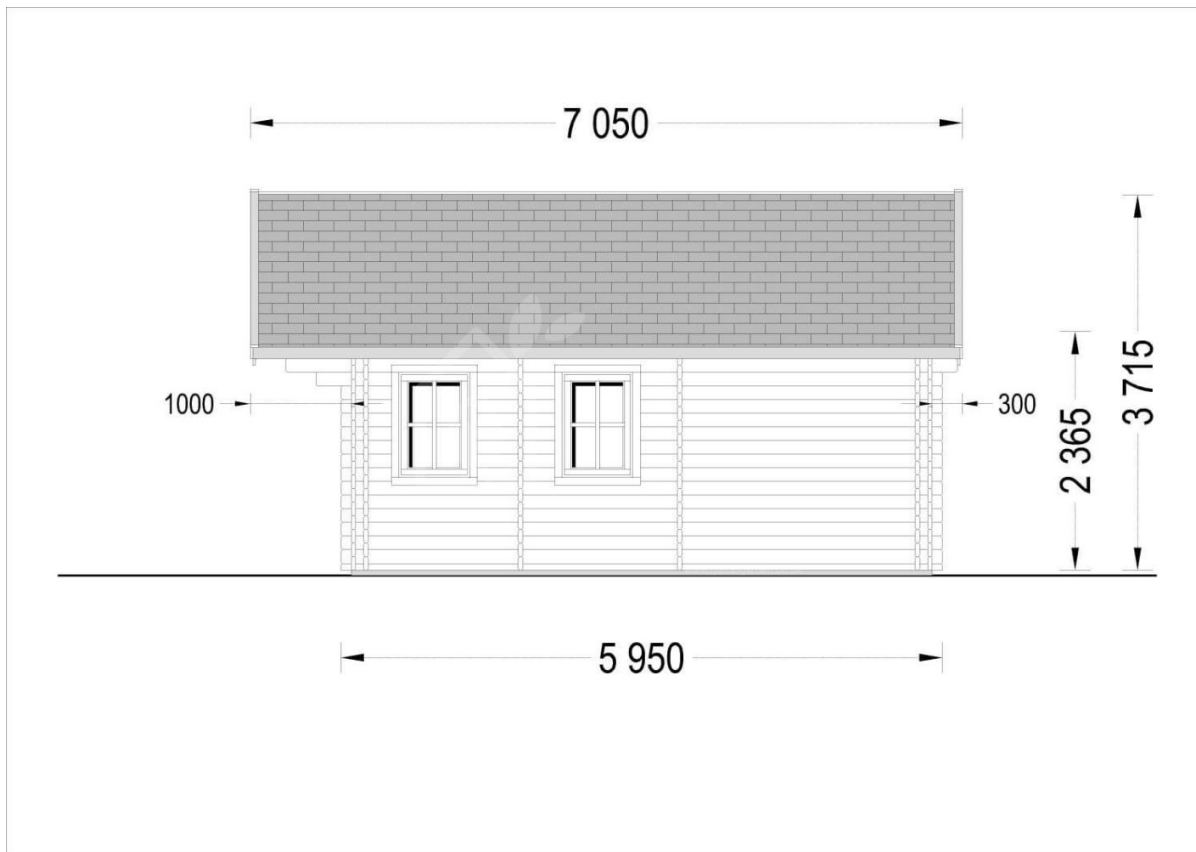


**Finance available. Contact us!**

## Specifications & detailed sketches







## Product specifications

Wall	44 mm + 120 mm polyurethane insulation + 44 mm
Material	Slow grown spruce
Doors	85 cm x 192 cm (3 units; internal) and 161 cm x 192 cm (1 unit; external)
Roof Area	42 m <sup>2</sup>
Floor area	27 m <sup>2</sup>
Windows	70 cm x 105 cm (7 units)
Eaves height	236,5 cm
Ridge Height	371,5 cm
Roof	20 mm Tongue and Groove roof boards + 9 mm roof construction + 175 mm insulation
Roof Overhang (Front, Side, Back)	122cm (4')
Floor	20 mm Tongue and Groove floor boards + 9 mm floor construction + 200 mm insulation
Anti Rot Warranty	10 Year
Total Number of Rooms	4
Internal dimensions (WxD)	427 x 577 cm
Minimum Base Required	434cm x 584cm
Roof Covering Material	Optional
External dimensions (WxD), Metric	450 x 595 cm
Wood Treatment	Optional

## Select product features according to your needs

Vinyl flooring	Grey	+£1,880.00
	Oak	+£1,880.00
Woodshed 2.2m x 1.44m		From +£599.00

Timber frame base	With metal ground screws	+£2,188.00
	(4.3x5.75m)	+£1,348.00
	With PVC pedestals (4.3x5.75m)	
Insulation package		+£0.00
Terrano metal roofing		+£2,831.00
Recuperator VL-80U5-E		+£704.00
PVC windows & doors	PVC windows & doors (anthracite color)	+£1,347.00
	PVC windows & doors (white color)	+£0.00
Storage shed 2.7m x 1.6m		From +£1,176.00
Bitumen roofing shingles + underlay	Red shingles	+£730.00
	Green shingles	+£730.00
	Black shingles	+£730.00
Clear water-based primer for interior		+£210.00
Metal roofing	Green	+£2,321.00
	Black	+£2,321.00
	Red	+£2,321.00
OptiLight Roof window 55cm x 78cm		+£299.00
Steel gutter system Ruukki		Anthracite Grey +£938.00
TIKKURILA Ultra Classic paints	Yellow	+£446.00
	Brown	+£338.00
	White	+£322.00
	Clear	+£291.00

## Customer Service

### Free delivery \*

Mainland England and Wales

4 - 8 working days for products in stock

4 - 8 weeks for products not in stock or custom-made products

Mainland Scotland

8 - 15 working days for products in stock

4 - 8 weeks for products not in stock or custom-made products

\* An extra charge for deliveries to mainland Scotland applies only for items which are priced under £3000. In such cases you will find these charges on each product page. For all items whose price is over £3000, delivery to mainland Scotland is free of charge.

---

### Payment

We accept card and bank payments.

To submit your order, you can either choose to pay a deposit of 20% of the total price or to pay the whole price in one go.

---

### Planning permission

Contact us for any advice you may need regarding basic planning permission or building regulation matters. We will always be happy to help you.

---

### 10 yrs. warranty

All garden buildings with a wall thickness of at least 34mm come with a 10-year anti-rot guarantee. Structures with 28mm wall thickness come with a corresponding 5-year anti-rot guarantee.