



## Residential Log Cabin With A Flat Roof And Terrace HYMER (34+34 mm), 42 m<sup>2</sup> + 10 m<sup>2</sup>

Product #AV2008

- Interchange the opposite walls!
- Premium windows & doors
- Tongue & Groove floorboards included
- Hardware kit included
- Window and door seals included
- Storm braces included
- Pure glass – no cheap plastic
- Reliable floor bearers
- Polite & Convenient delivery
- Made while protecting the forests
- Better resistance to rot & mould
- Moisture resistant door and windows
- Reinforced roof construction
- Secure locks & hinges
- Direct from the factory
- Fast & Easy installation
- Natural trim only
- Allergy free materials only

**£15,126.00**

~~£15,495.00~~ / You save £369.00

### The price includes:

wooden building kit (walls, roof, floor), double glazed wooden doors & windows, hardware kit, delivery, offloading, VAT.

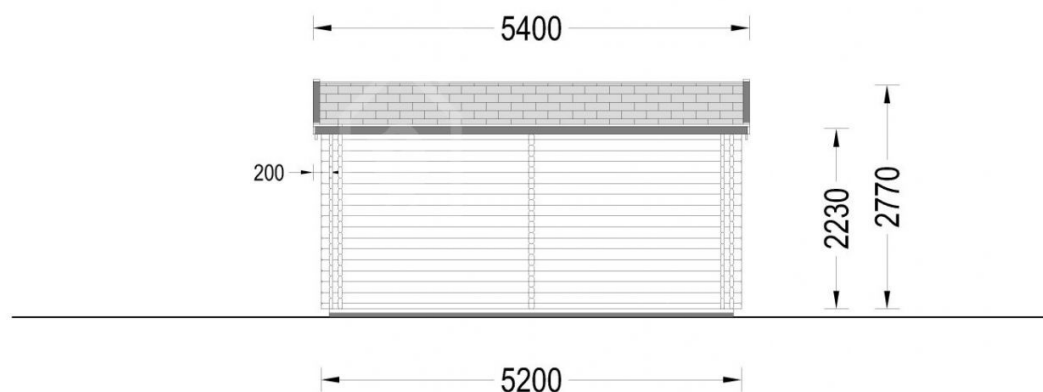
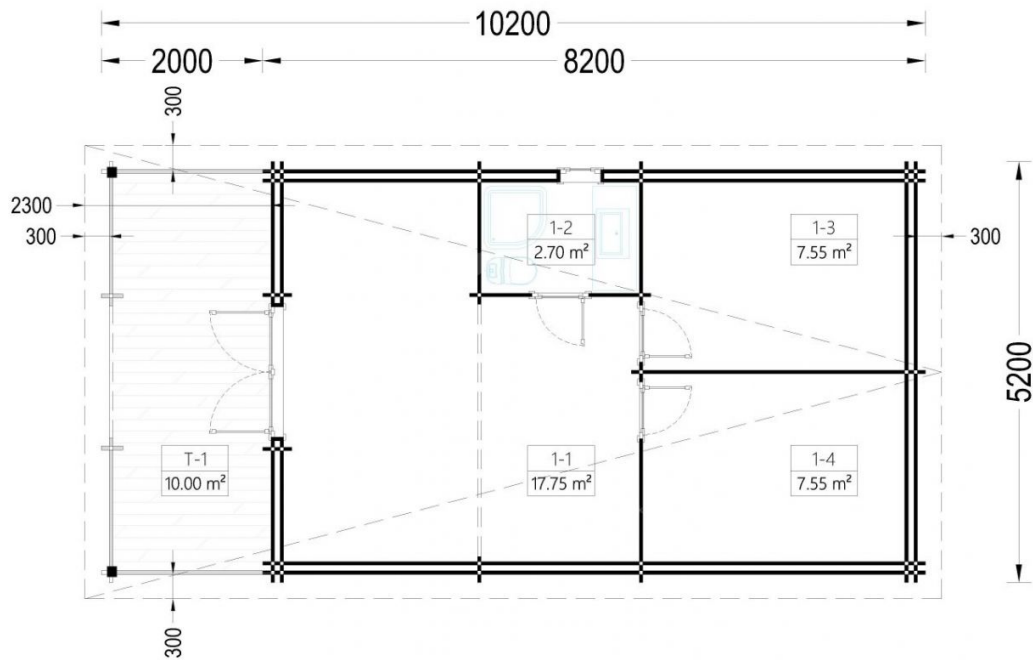
Visit our website to make sure this is the current price:

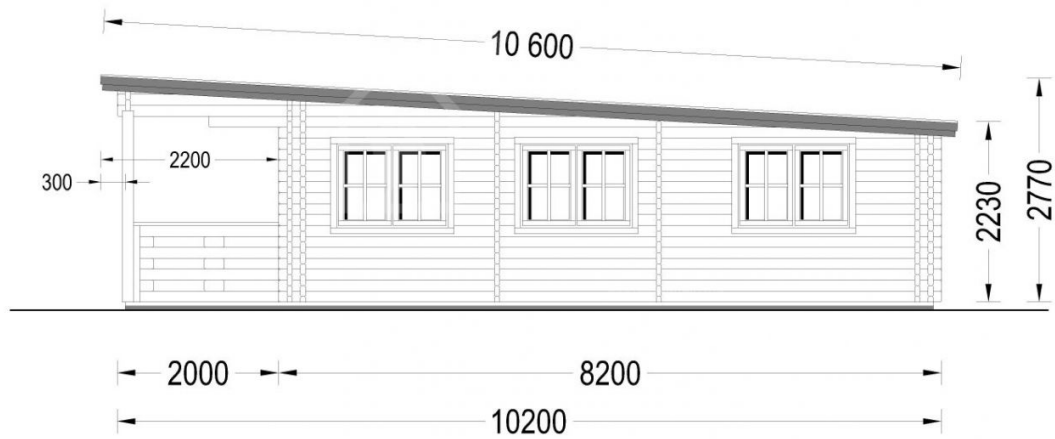
<https://www.quick-garden.co.uk/residential-log-cabin-with-a-flat-roof-and-terrace-hymer-34-34-mm-42-m2-10-m2.html>

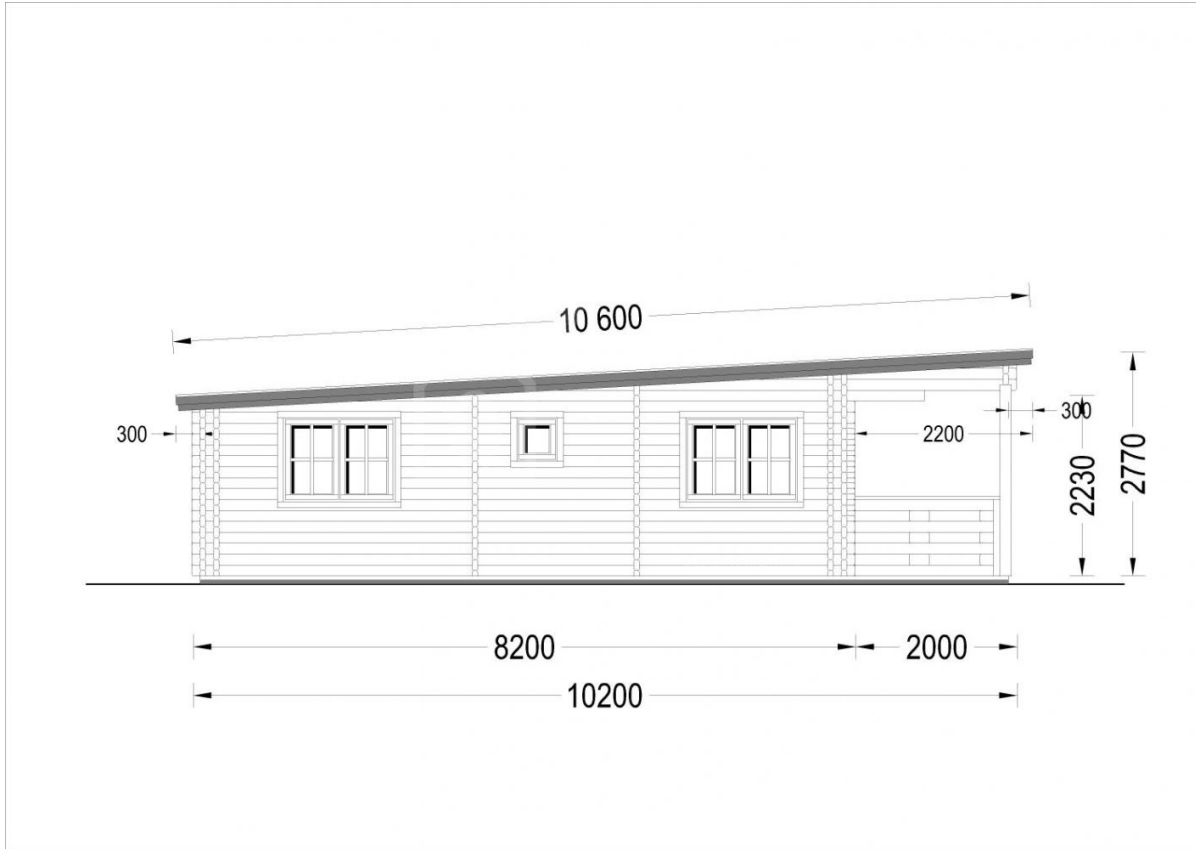


**Finance available. Contact us!**

## Specifications & detailed sketches







## Product specifications

Material	Slow grown spruce
Doors	3* 70 cm x 192 cm; 1* 161 cm x 192 cm
Roof Area	62 m²
Floor area	42 m²
Windows	5* 138 cm x 105 cm; 1* 50 cm x 50 cm
Eaves height	223 cm
Ridge Height	277 cm
Roof	19 - 20mm thick tongue & groove boards
Roof Overhang (Front, Side, Back)	192 cm
Floor	19 - 20mm thick tongue & groove boards
Wall	34+34 mm
Wood Treatment	Optional
Roof Slope Ratio	5°
Anti Rot Warranty	10 Year
Living space	37,61 m²
Total Number of Rooms	4
Roof Covering Material	Optional
External dimensions (WxD), Metric	520 x 820 cm + 520 x 200 cm

## Select product features according to your needs

Clear water-based primer for interior		+£210.00
Metal roofing	Red	+£2,918.00
	Green	+£2,918.00
	Black	+£2,918.00
Steel gutter system Ruukki	Anthracite Grey	+£389.00
PVC windows & doors (White)		+£5,199.00

PVC windows & doors (Anthracite)		+£6,692.00
TIKKURILA Ultra Classic paints	White	+£322.00
	Brown	+£338.00
	Clear	+£291.00
	Yellow	+£446.00
EPDM Roof Covering Material		+£1,937.00
Storage shed 2.7m x 1.6m		From +£1,176.00
Timber frame base	With metal ground screws (5x10m)	+£4,254.00
	With PVC pedestals (5x10m)	+£2,559.00
Woodshed 2.2m x 1.44m		From +£599.00
Vinyl flooring	Grey	+£2,056.00
	Oak	+£2,056.00

## Customer Service

### Free delivery \*

Mainland England and Wales

4 - 8 working days for products in stock

4 - 8 weeks for products not in stock or custom-made products

Mainland Scotland

8 - 15 working days for products in stock

4 - 8 weeks for products not in stock or custom-made products

\* An extra charge for deliveries to mainland Scotland applies only for items which are priced under £3000. In such cases you will find these charges on each product page. For all items whose price is over £3000, delivery to mainland Scotland is free of charge.

---

### Payment

We accept card and bank payments.

To submit your order, you can either choose to pay a deposit of 20% of the total price or to pay the whole price in one go.

---

### Planning permission

Contact us for any advice you may need regarding basic planning permission or building regulation matters. We will always be happy to help you.

---

### 10 yrs. warranty

All garden buildings with a wall thickness of at least 34mm come with a 10-year anti-rot guarantee. Structures with 28mm wall thickness come with a corresponding 5-year anti-rot guarantee.