



Wooden Kiosk (28 mm), 3x3 m (10'x10'), 9 m²

Product #AV006-3

- Interchange the opposite walls!
- Tongue & Groove floorboards included
- Hardware kit included
- Window and door seals included
- Storm braces included
- Pure glass – no cheap plastic
- Reliable floor bearers
- Polite & Convenient delivery
- Made while protecting the forests
- Better resistance to rot & mould
- Moisture resistant door and windows
- Reinforced roof construction
- Secure locks & hinges
- Direct from the factory
- Fast & Easy installation
- Natural trim only
- Allergy free materials only

£2,248.00

~~£2,292.00~~ / You save £44.00

The price includes:

wooden building kit (walls, roof, floor),
wooden doors, hardware kit, delivery,
offloading, VAT.

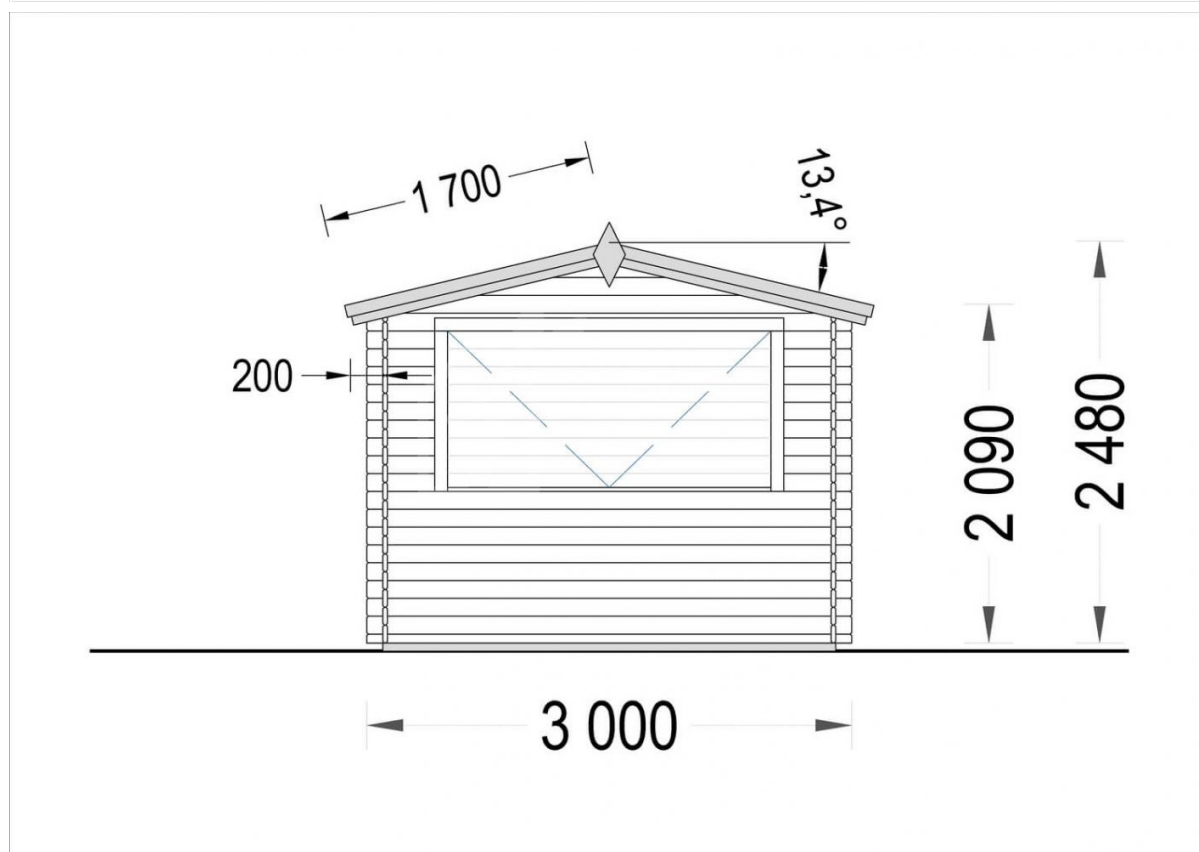
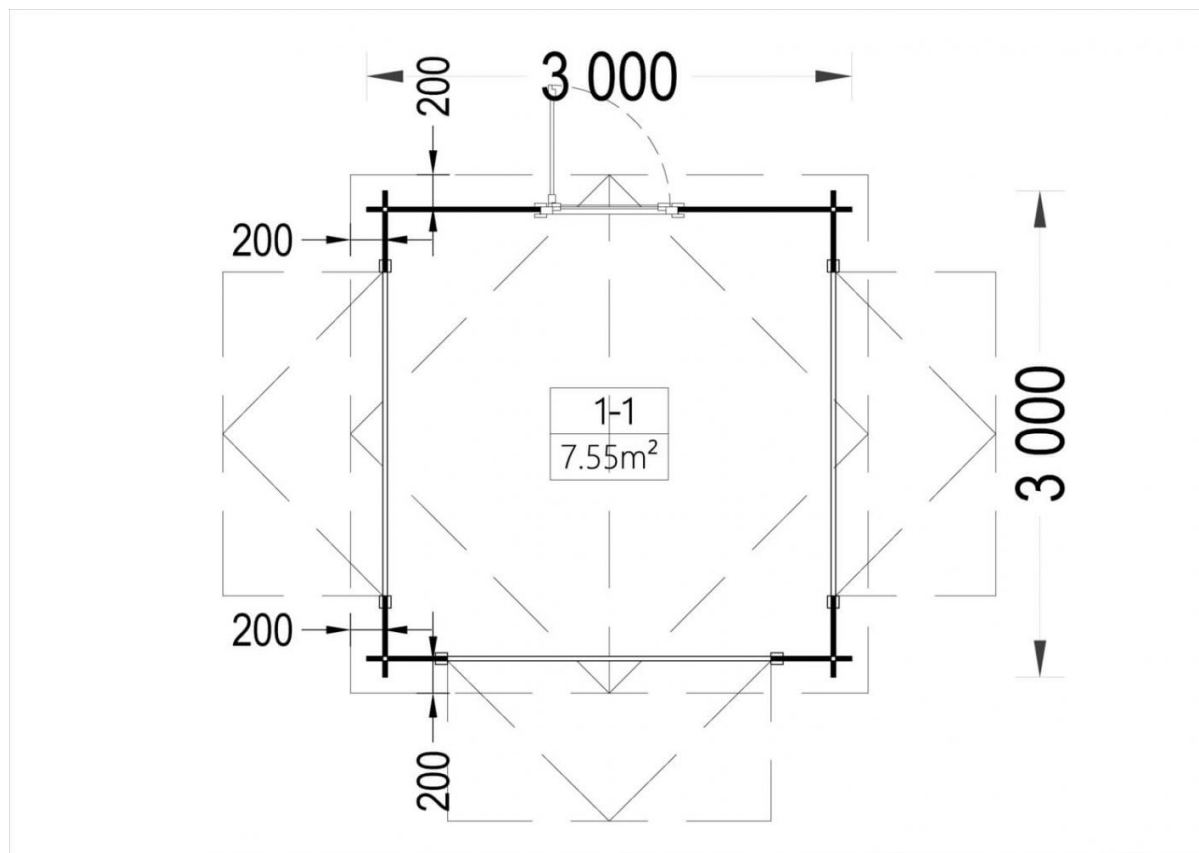
Visit our website to make sure this is
the current price:

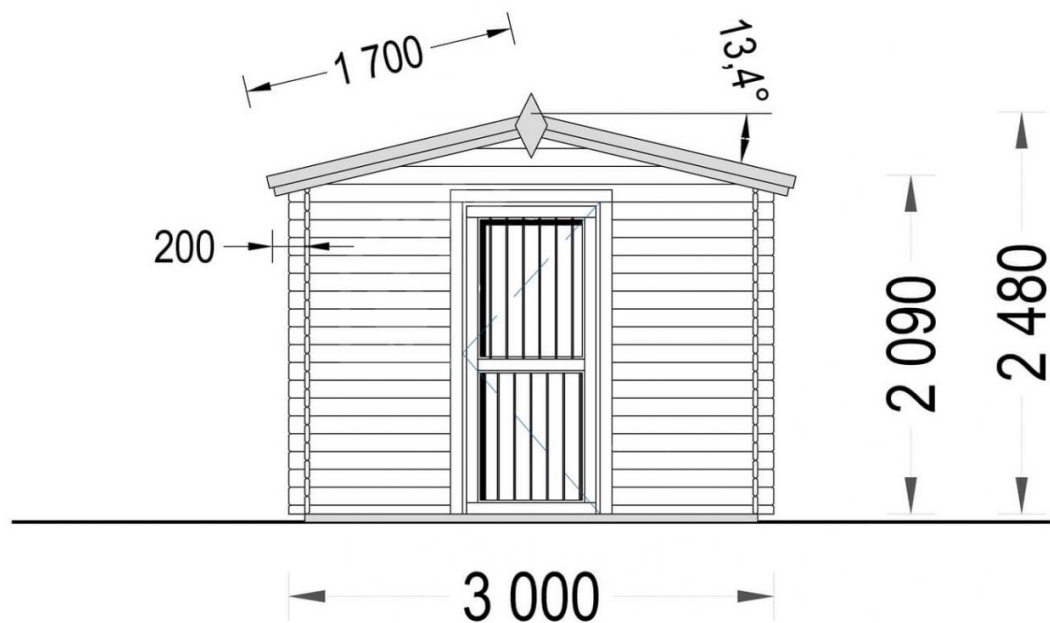
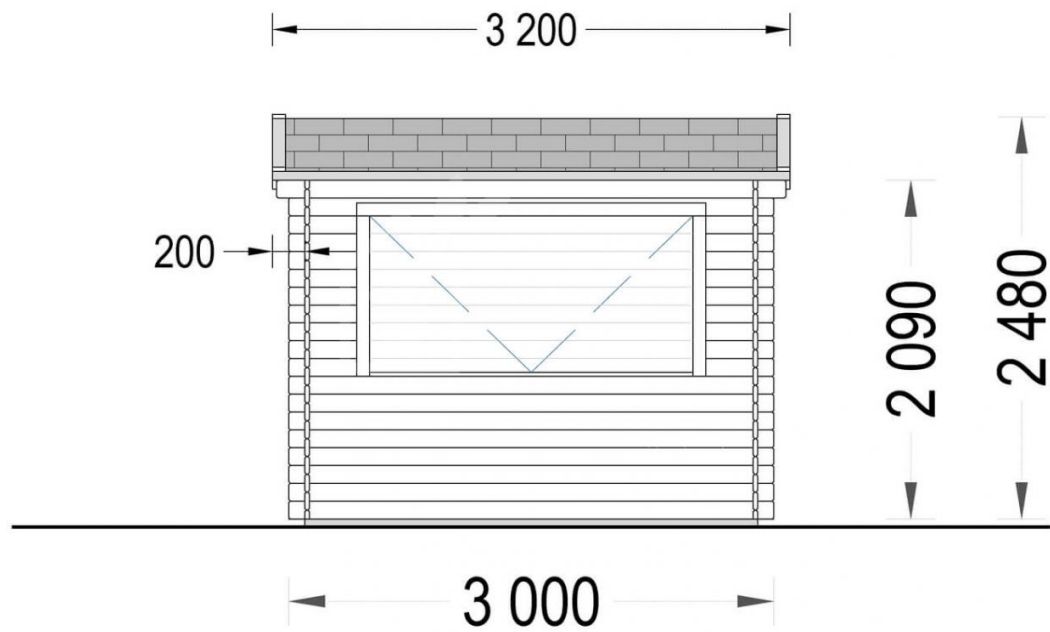
<https://www.quick-garden.co.uk/wooden-kiosk-28-mm-3x3-m-10x10-9-m2.html>

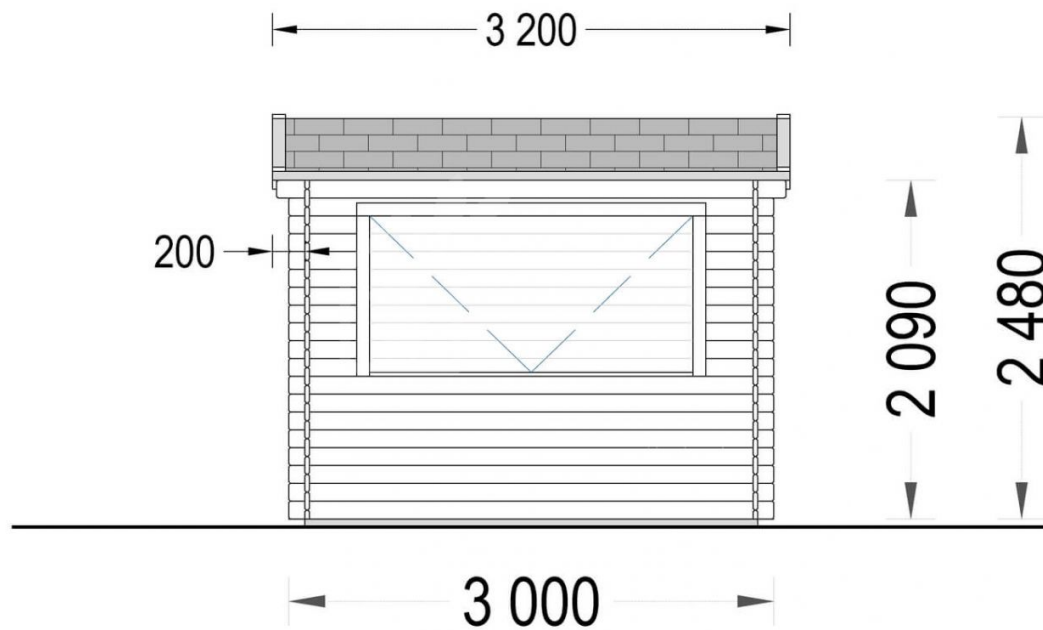


Finance available. Contact us!

Specifications & detailed sketches







Product specifications

Floor area	9 m ²
Material	Slow grown spruce
Roof	18mm thick tongue & groove boards
Roof Area	11m ²
Roof Slope Ratio	13,4°
External dimensions (WxD), Metric	300 cm x 300 cm
Internal dimensions (WxD)	27 cm x 274 cm
Living space	7,55 m ²
Wall	28 mm
Eaves height	203 cm
Ridge Height	243 cm
Floor	18mm thick tongue & groove boards
Doors	1* 85 cm x 192 cm
Windows	3* 200 cm x 99 cm
Total Number of Rooms	1
Roof Covering Material	Optional
Anti Rot Warranty	10 Year
Wood Treatment	Optional

Select product features according to your needs

Metal roofing	Red	+£923.00
	Green	+£923.00
	Black	+£923.00
TIKKURILA Ultra Classic paints	White	+£161.00
	Brown	+£169.00
	Yellow	+£223.00
	Clear	+£194.00

Steel gutter system Ruukki	Anthracite Grey	+£572.00
Bitumen roofing shingles + underlay	Red shingles	+£229.00
	Green shingles	+£229.00
	Black shingles	+£229.00
Clear water-based primer for interior		+£105.00
Terrano metal roofing		+£1,228.00
Timber frame base	With metal ground screws (2.8x2.8m)	+£1,045.00
	With PVC pedestals (2.8x2.8m)	+£670.00
Woodshed 2.2m x 1.44m		From +£599.00
Vinyl flooring	Grey	+£560.00
	Oak	+£560.00

Customer Service

Free delivery *

Mainland England and Wales

4 - 8 working days for products in stock

4 - 8 weeks for products not in stock or custom-made products

Mainland Scotland

8 - 15 working days for products in stock

4 - 8 weeks for products not in stock or custom-made products

* An extra charge for deliveries to mainland Scotland applies only for items which are priced under £3000. In such cases you will find these charges on each product page. For all items whose price is over £3000, delivery to mainland Scotland is free of charge.

Payment

We accept card and bank payments.

To submit your order, you can either choose to pay a deposit of 20% of the total price or to pay the whole price in one go.

Planning permission

Contact us for any advice you may need regarding basic planning permission or building regulation matters. We will always be happy to help you.

10 yrs. warranty

All garden buildings with a wall thickness of at least 34mm come with a 10-year anti-rot guarantee. Structures with 28mm wall thickness come with a corresponding 5-year anti-rot guarantee.